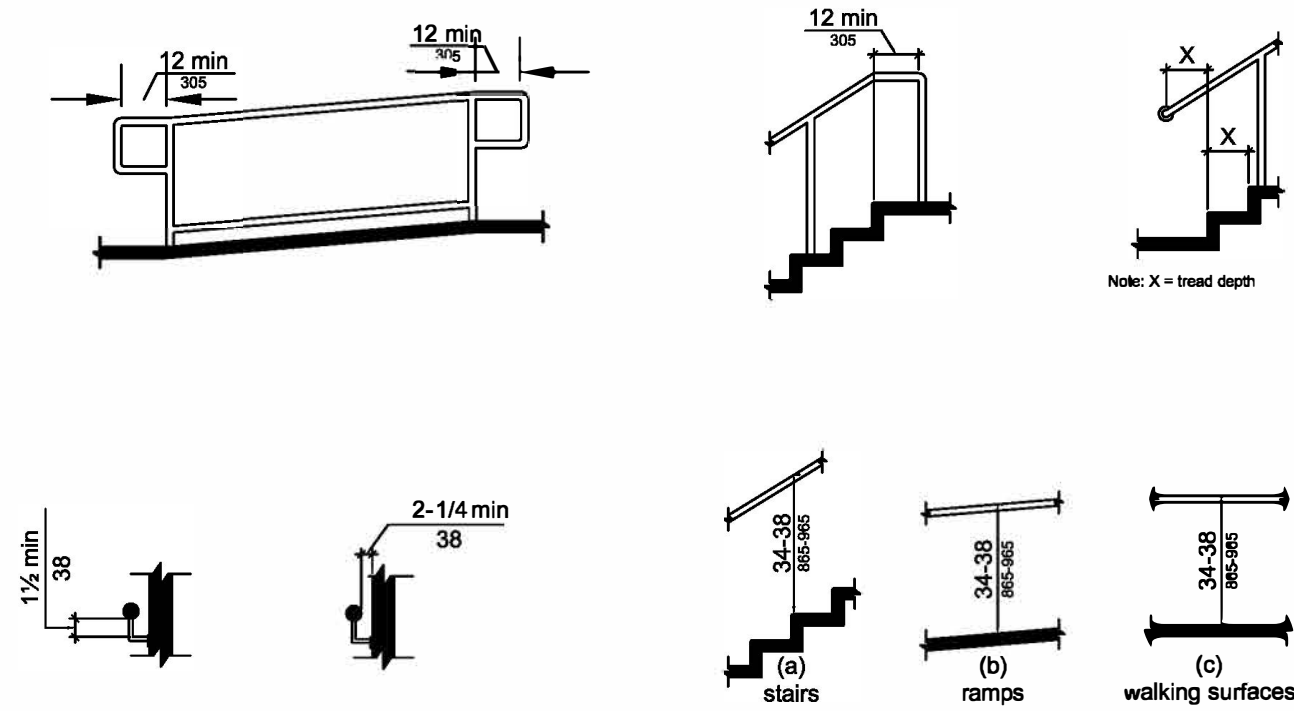
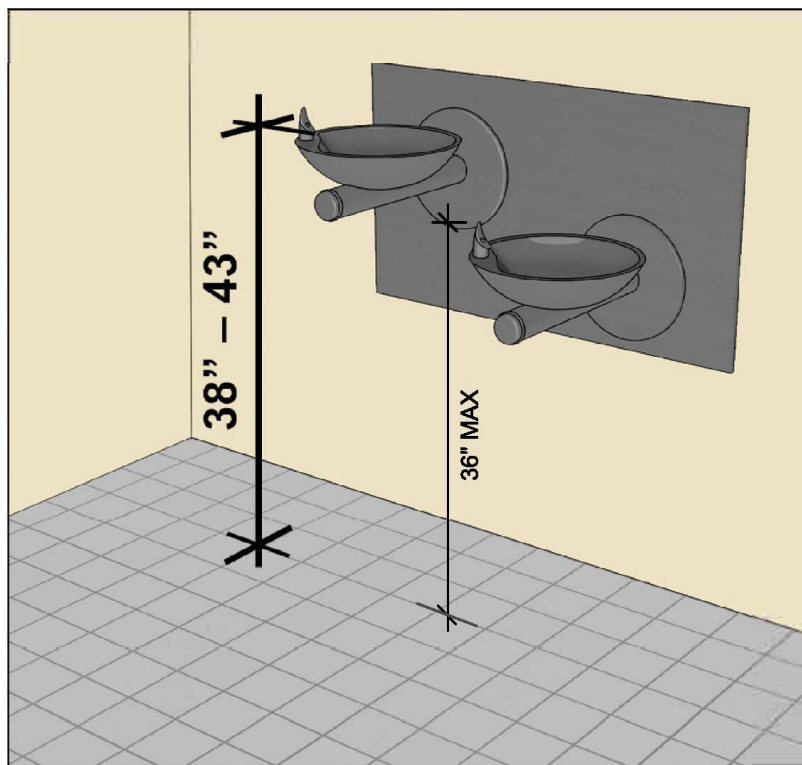
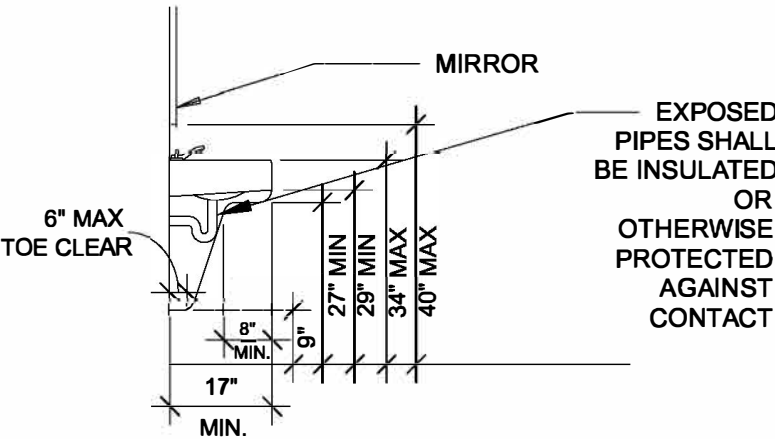
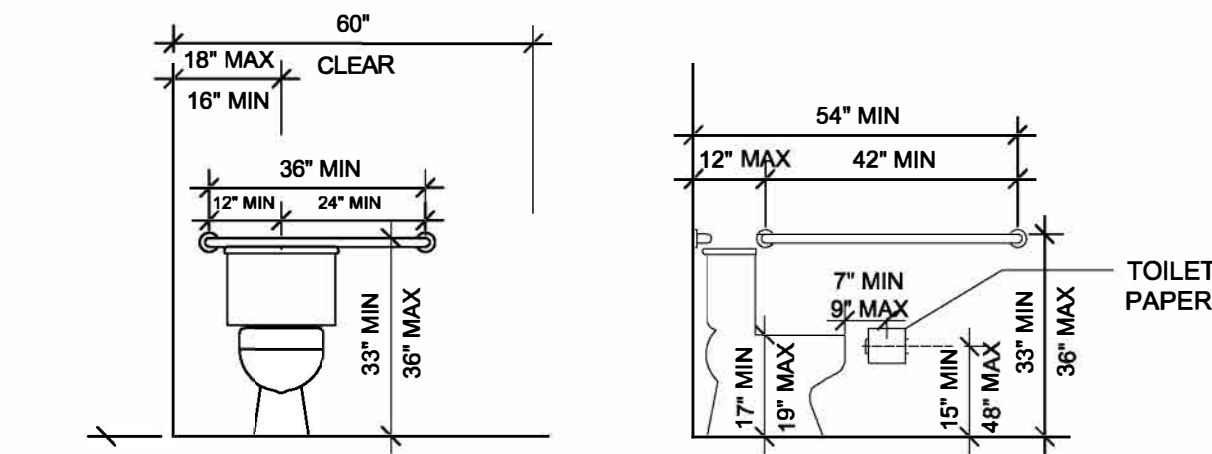


HANDRAILS & GRAB BARS



MOUNTING LOCATIONS

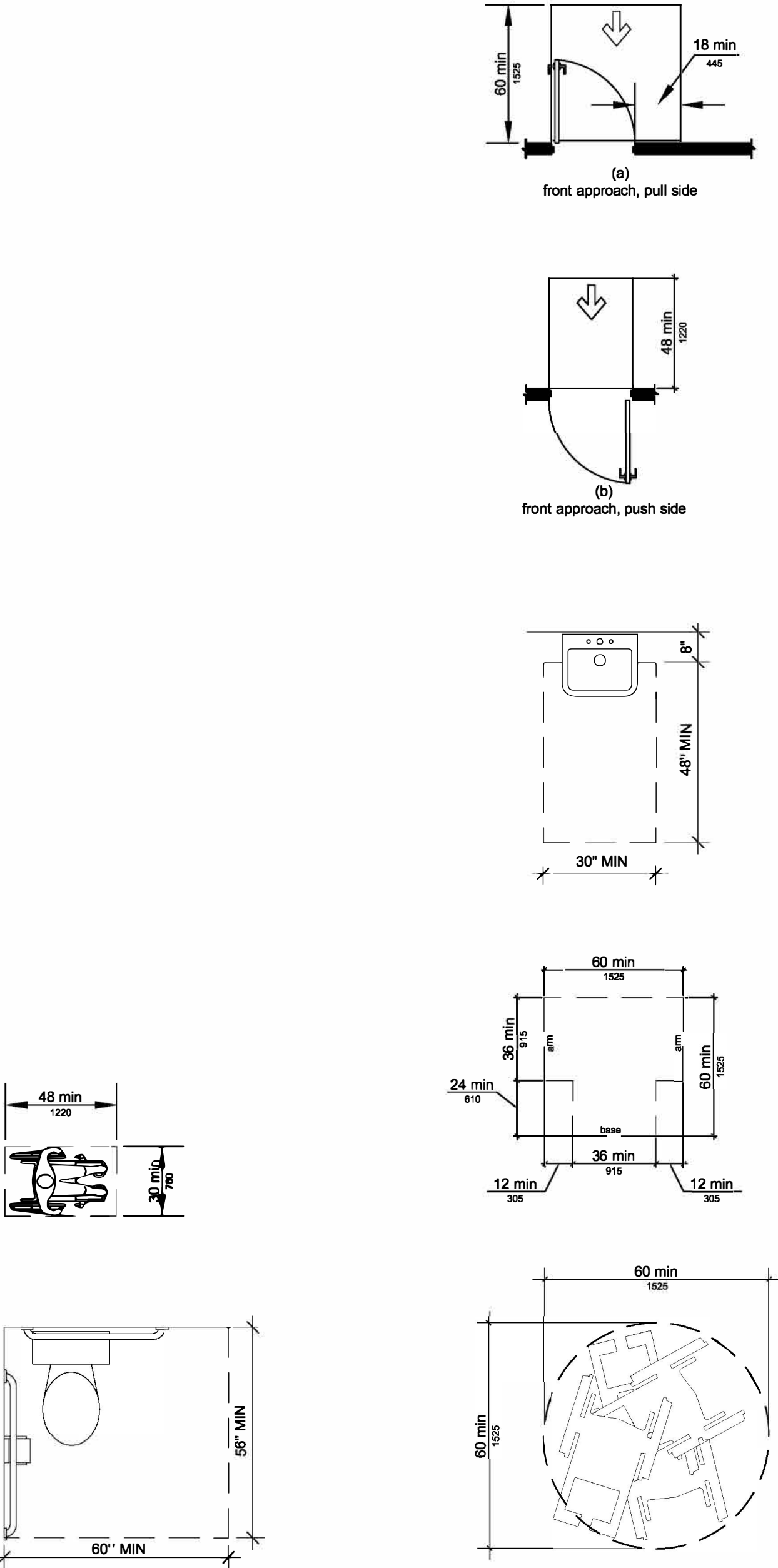


Provisions for wheelchair accessible units require access for a forward approach and address spouts, water flow, and operable parts. Units can be wall mounted or free-standing.

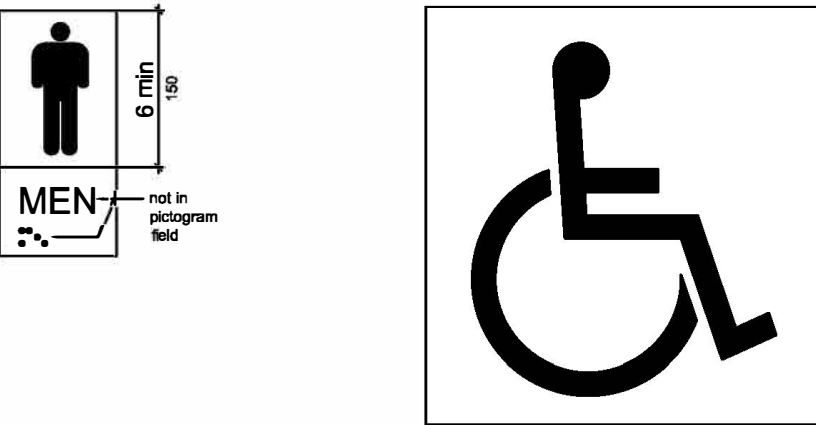
Knee and toe space is required below the unit. The combined depth of the knee and toe space must be at least 17" (and 25" maximum) measured from the leading edge of the unit, including bumpers.

Drinking fountains for standing persons must have spouts 38" to 43" high and compliant operable parts and be located on an accessible route. They cannot obstruct the forward approach clearance, including knee and toe space, required at wheelchair accessible units.

CLEARANCES



SIGNAGE & SYMBOLS



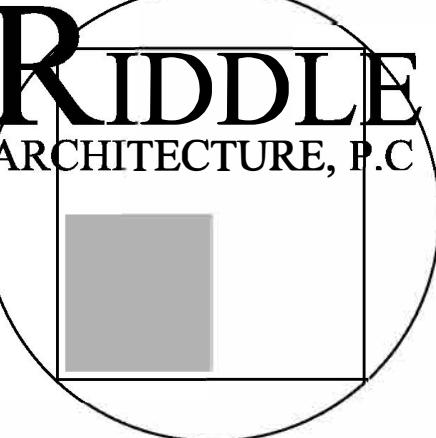
REVISIONS

#	DATE

RESTROOMS AT:

ANDREWS PARK

501 WELLINGTON STREET
MADISON, GEORGIA



AMERICAN INSTITUTE OF ARCHITECTS
1481 HODGES MILL ROAD
WATKINSVILLE, GA 30677
(404) 285-8646

TITLE: ACCESSIBILITY DETAILS

JOB #: 2513
DATE: 02.04.26

SHEET #

A-3