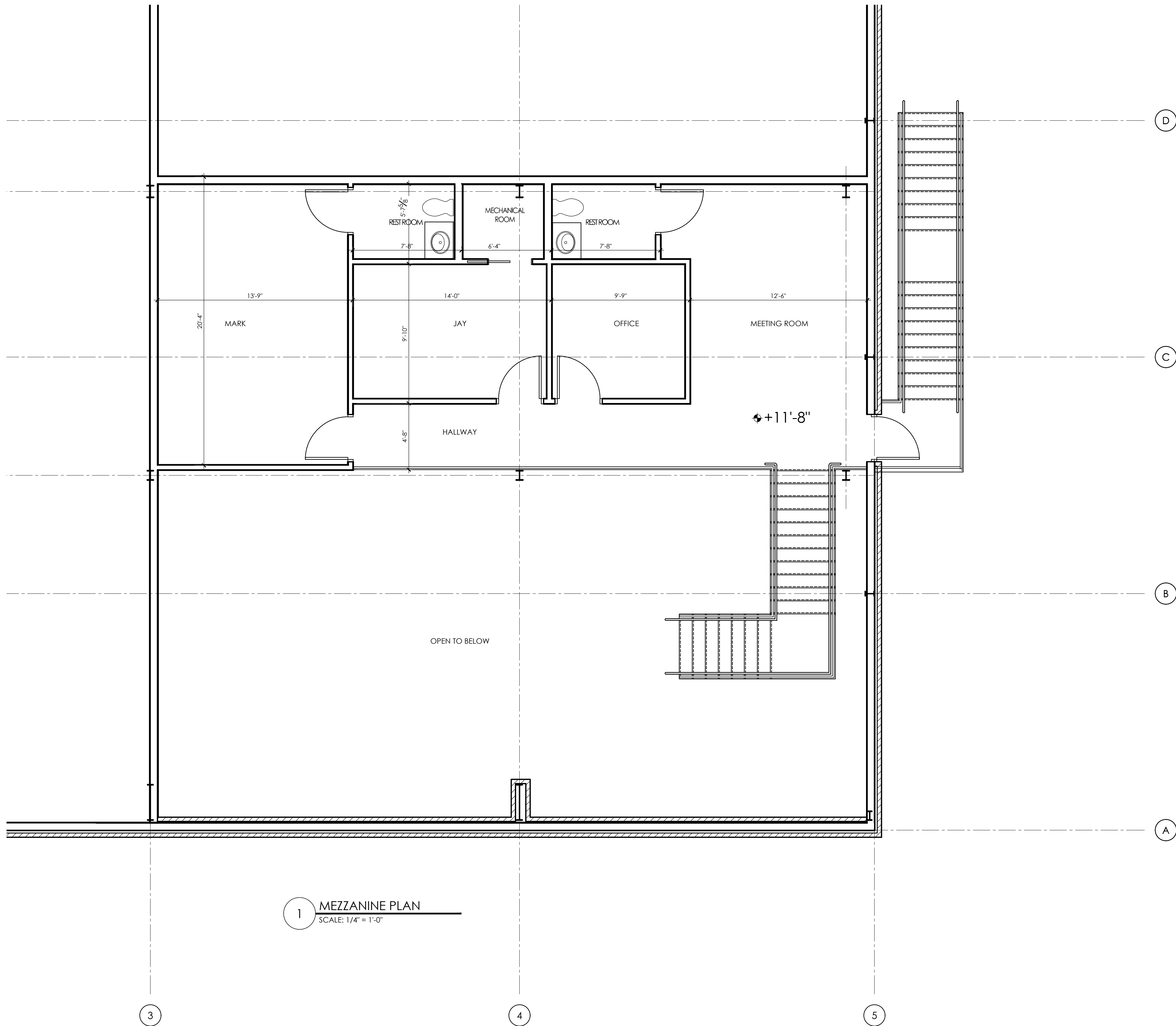


COPYRIGHT ZABBY'S FRANCHISING INC. THESE PLANS ARE THE PROPERTY OF ZABBY'S FRANCHISING, INC. AND ARE SUBJECT TO FEDERAL COPYRIGHT LAWS. ANY USE OF SAME WITHOUT THE EXPRESS WRITTEN PERMISSION OF ZABBY'S FRANCHISING, INC. IS STRICTLY PROHIBITED.



ARCHITECT OF RECORD:
THOMAS E. MORGAN, JR.
ARCHITECT

423 FISCHER TRAIL
ELLIJAY, GEORGIA 30540

SEAL



3450 Acworth Due West Road
Building 100, Suite 120
Kennesaw, Georgia 30144
P: 770-917-9172
F: 770-917-9470
www.mrpdesign.com

RELEASED FOR
CONSTRUCTION

ISSUES / REVISIONS

DATE	DESCRIPTION

REVISIONS

DRAWN BY: GR

CHK'D BY: TM

OFFICE BUILD-OUT
Hwy 81 at Resource Park
Snellville, GA 30039

SHEET TITLE:

ENLARGED
MEZZANINE PLAN

PROJECT NO: 25058

A-1.11