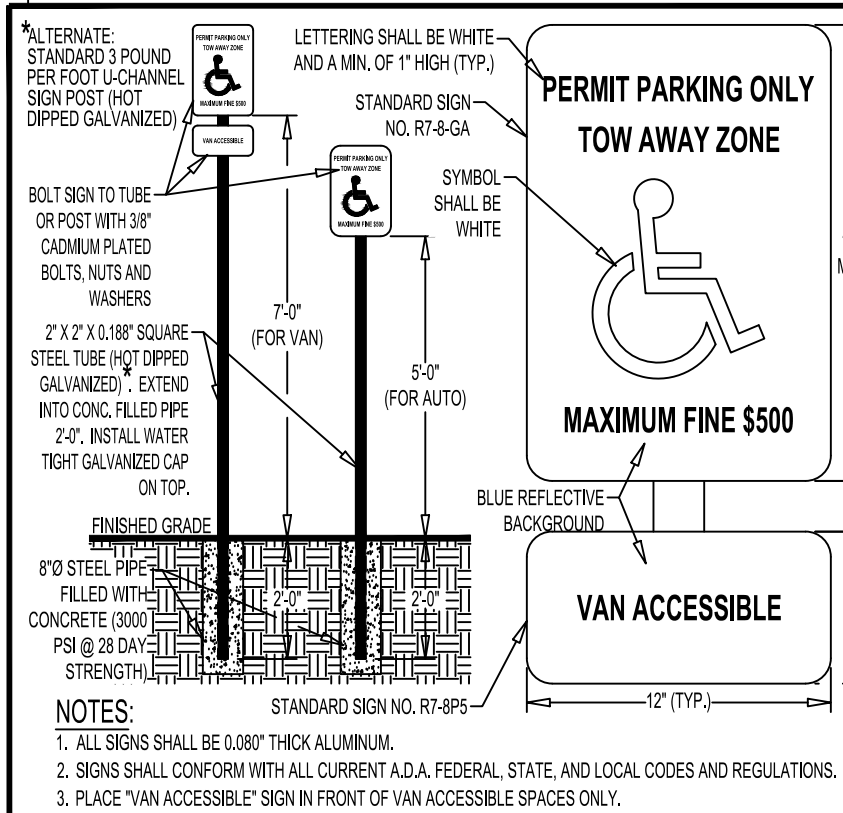
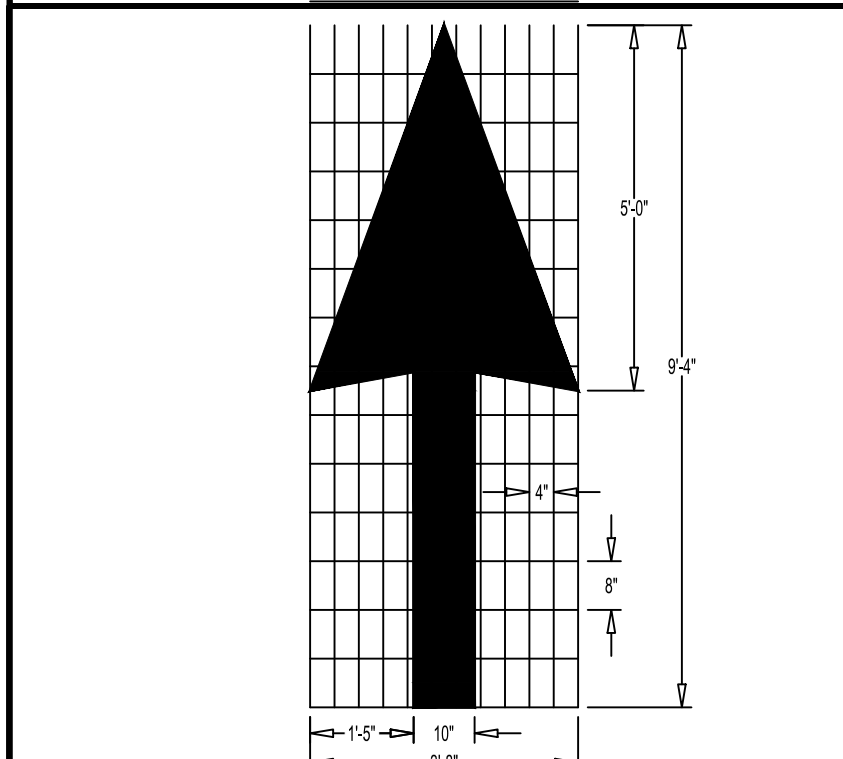


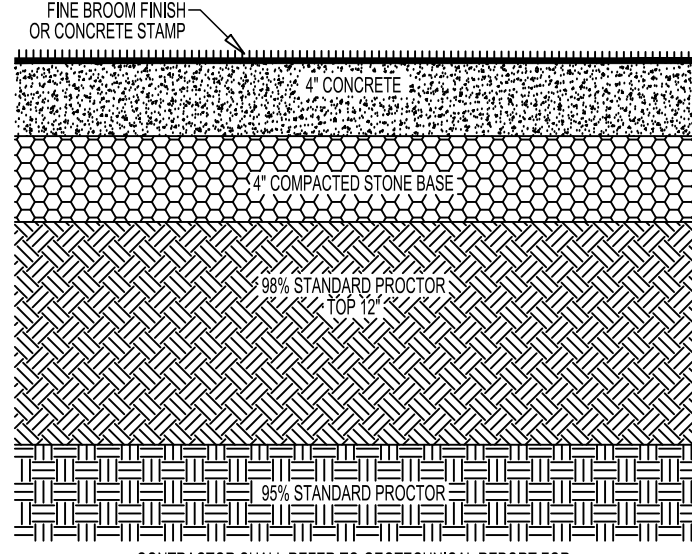
STANDARD DUTY
ASPHALT PAVING SECTION
N.T.S.



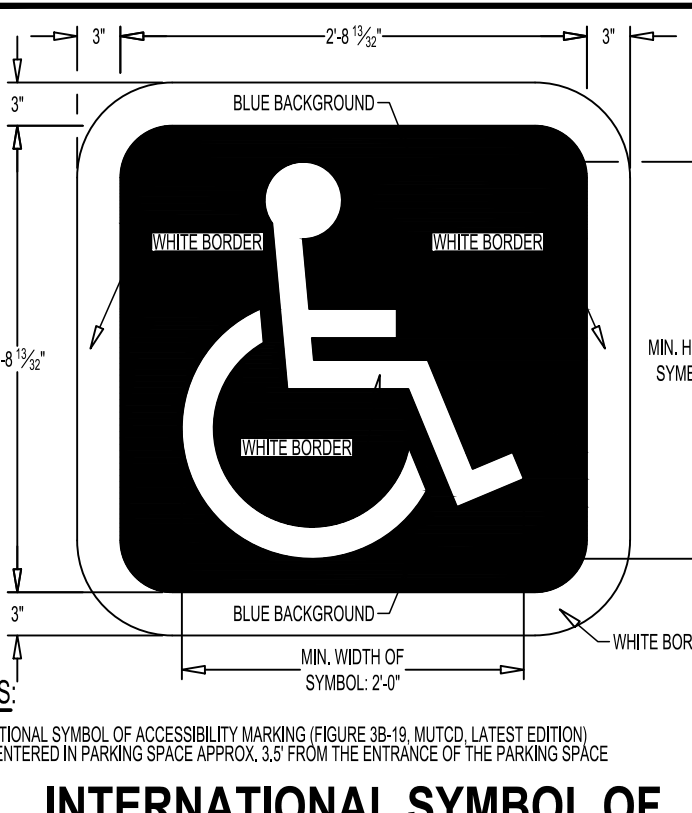
ADA PARKING SIGN



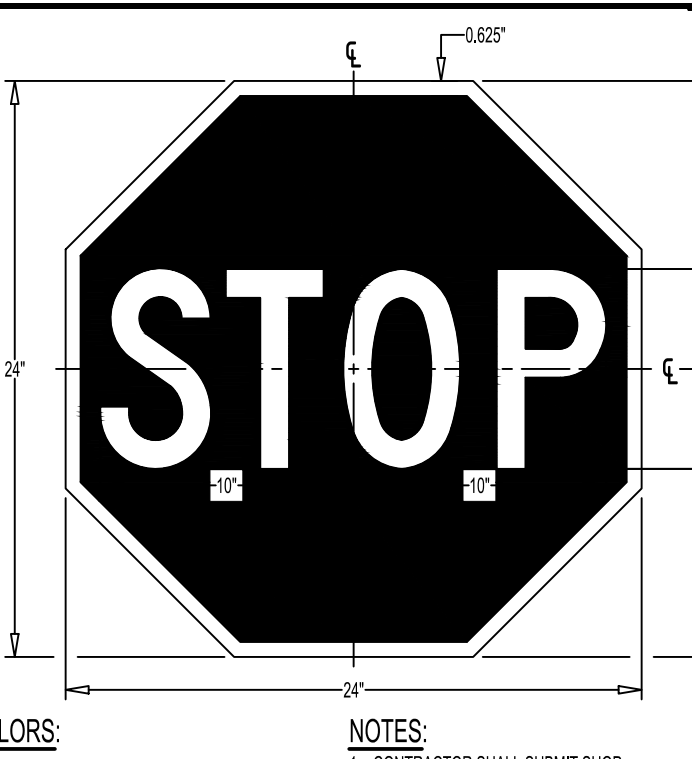
PAVEMENT MARKING ARROW
TYPE I, WHITE (12.0 SQ. FT.)



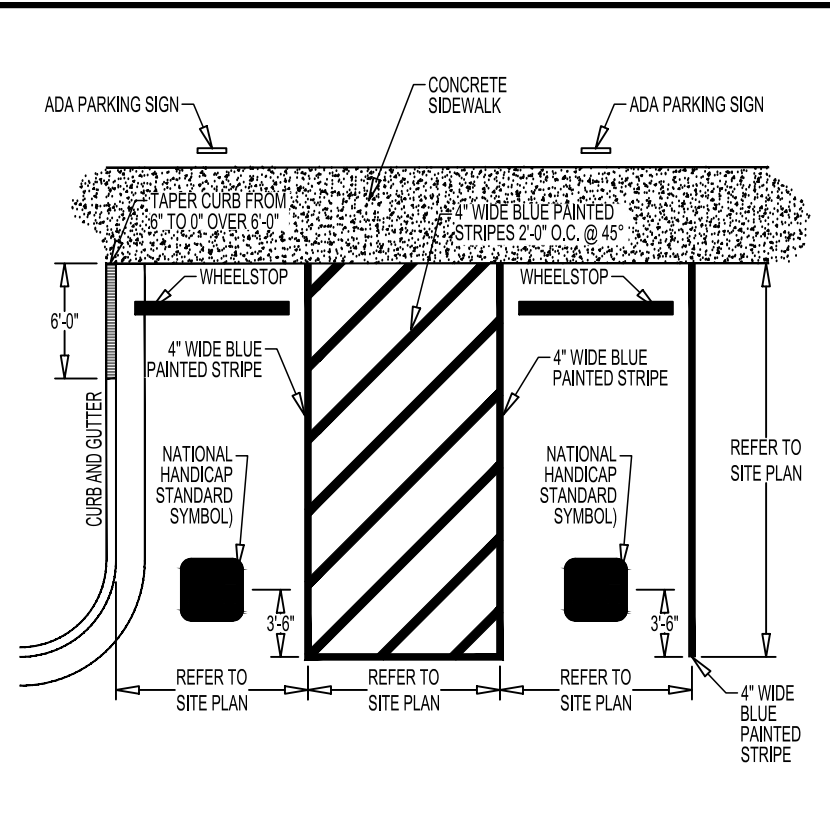
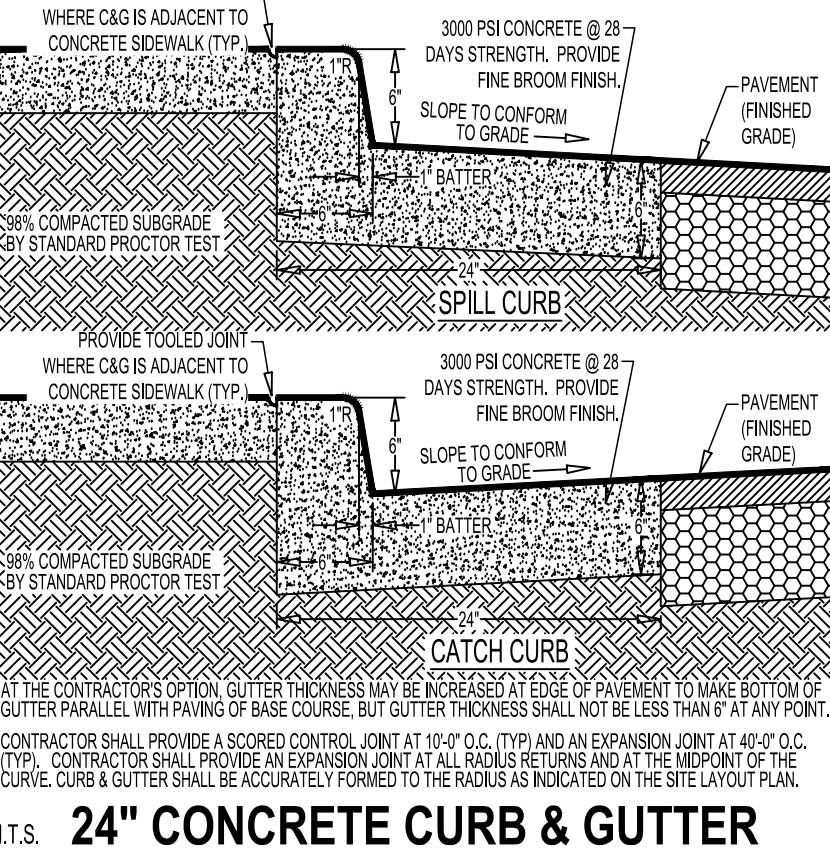
STANDARD DUTY (PEDESTRIAN)
CONCRETE SECTION
N.T.S.



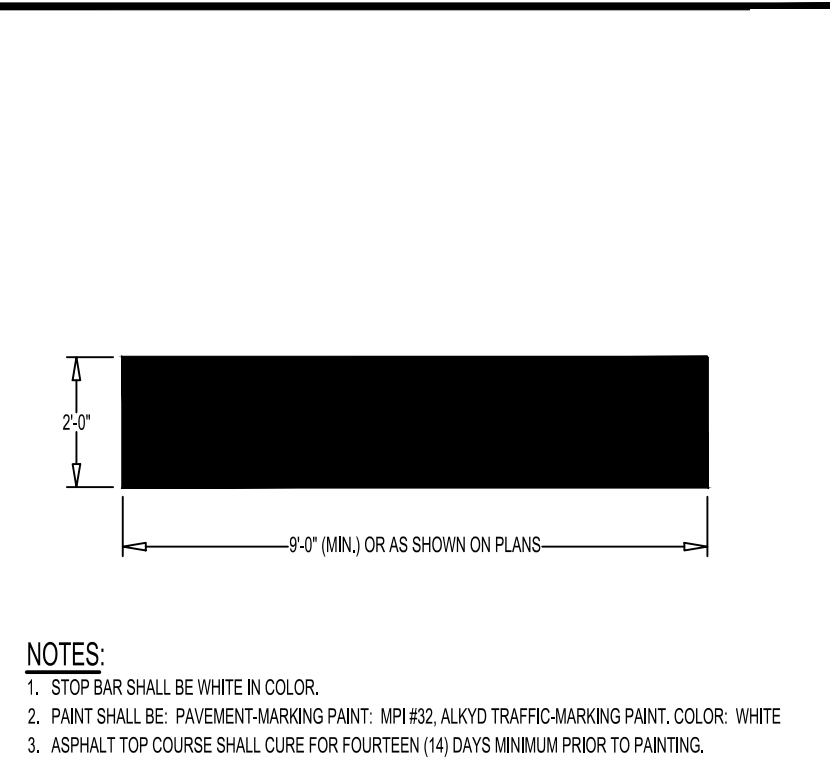
INTERNATIONAL SYMBOL OF
ACCESSIBILITY MARKING



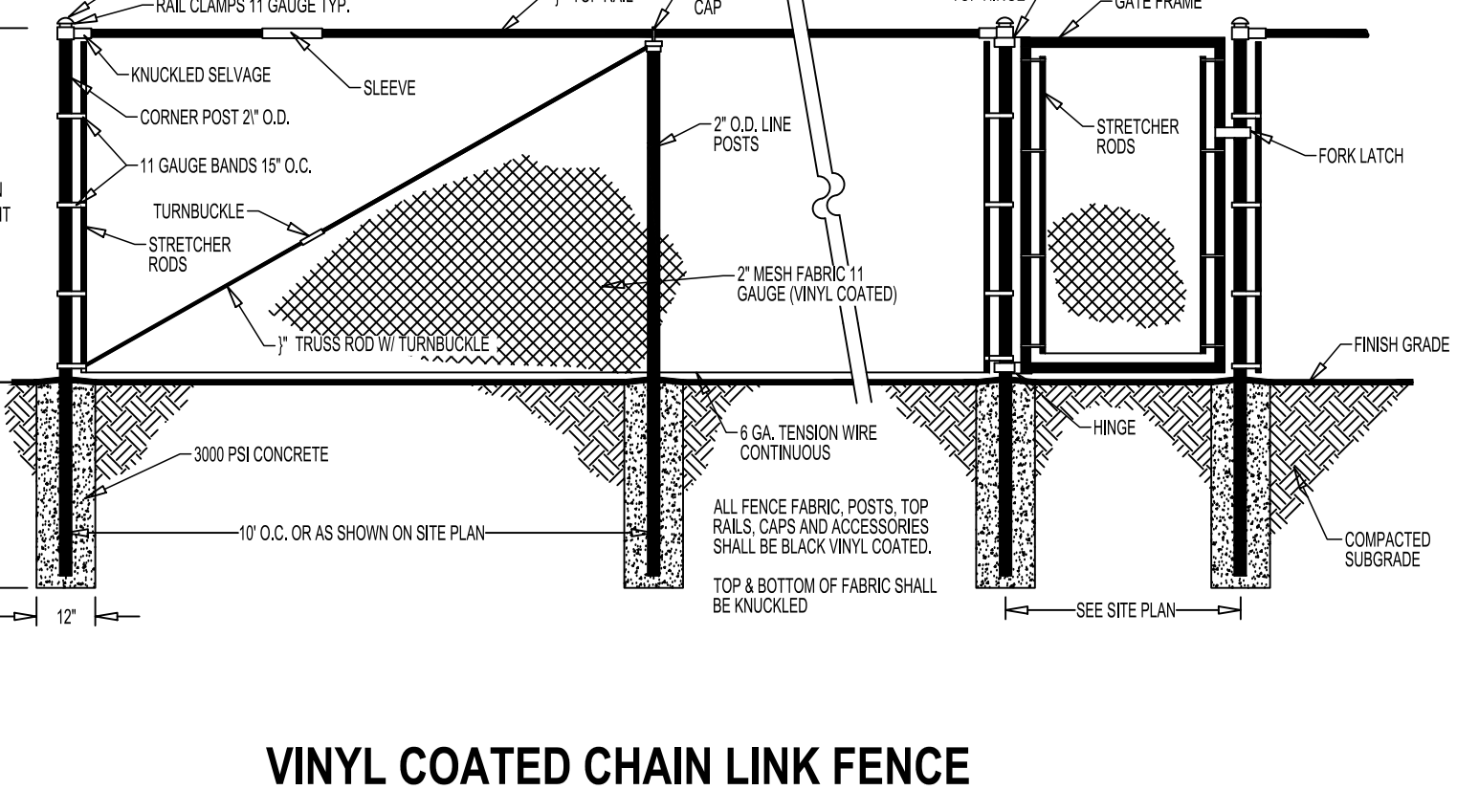
STOP SIGN (STD. R1-1)



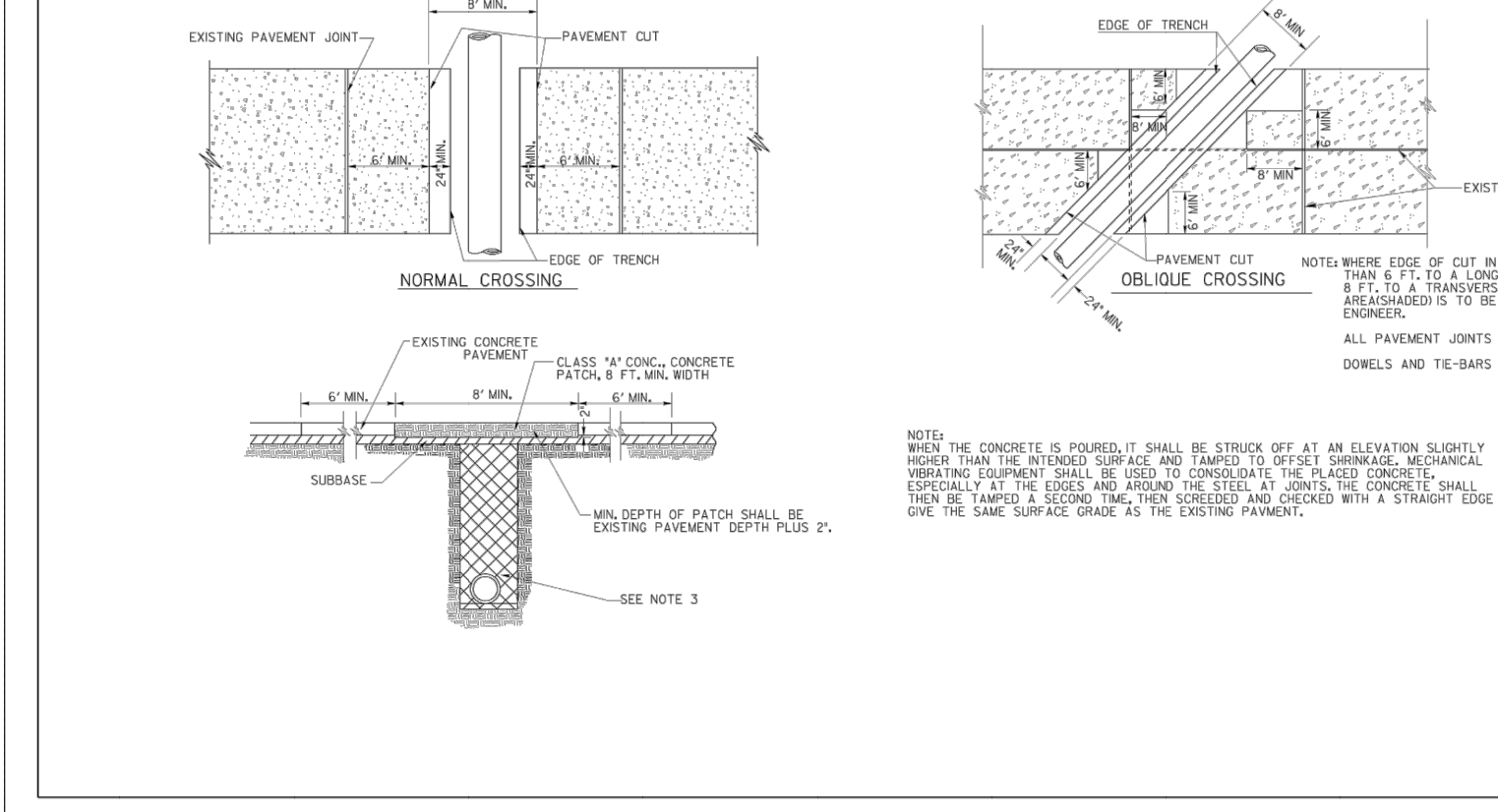
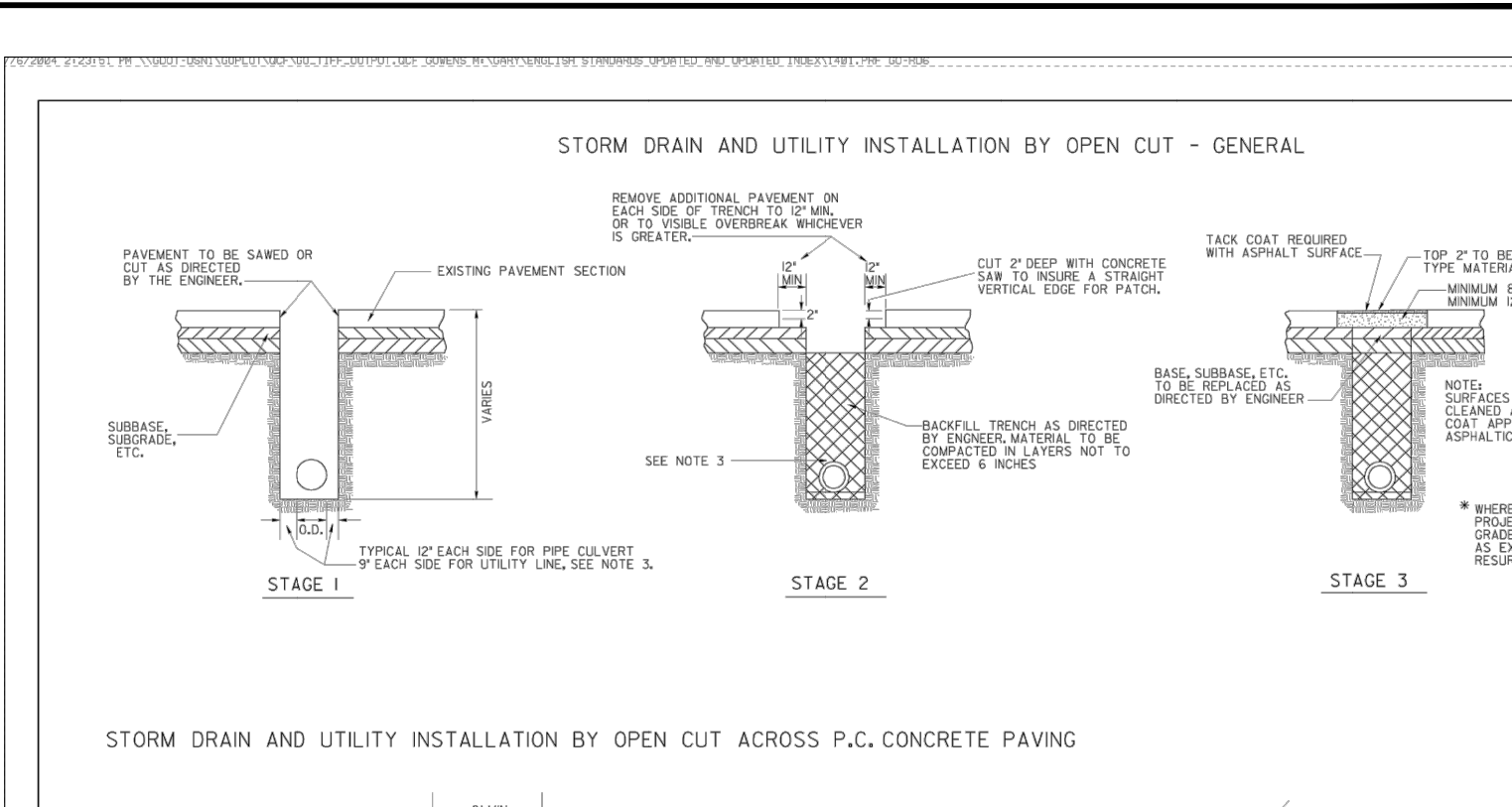
ADA PARKING STRIPING



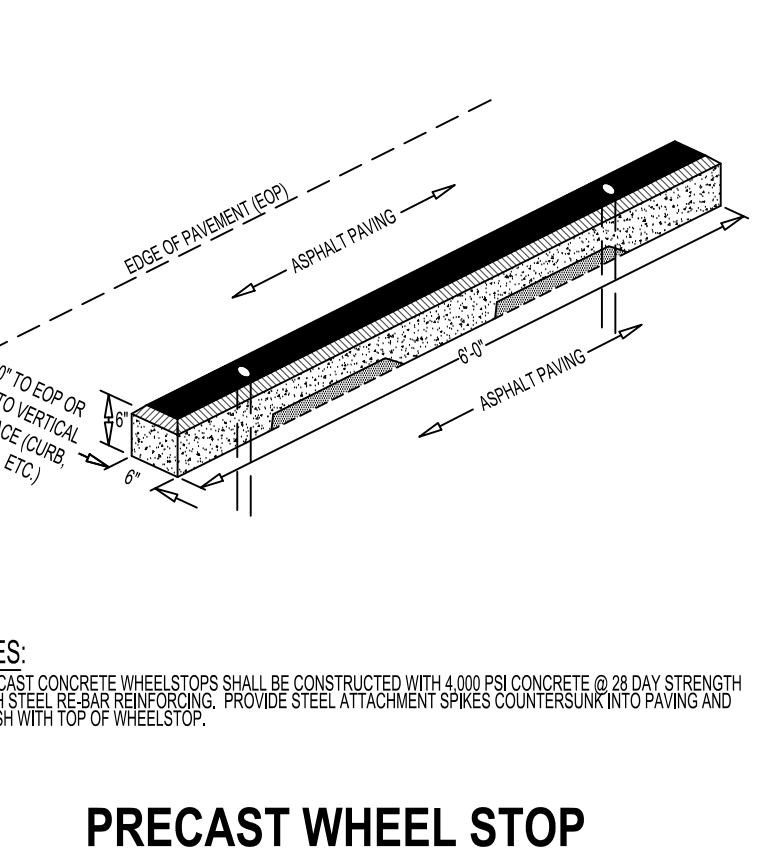
PAINTED STOP BAR



VINYL COATED CHAIN LINK FENCE



STORM DRAIN AND UTILITY INSTALLATION BY OPEN CUT ACROSS P.C. CONCRETE PAVING



PRECAST WHEEL STOP

VICTOR
SITE SET
02-04-2026



georgia civil
CIVIL ENGINEERING
LANDSCAPE ARCHITECTURE
LAND SURVEYING

311 N. Main St. Ste. 101, Unit C
P.O. Box 896 | Madison, GA 30650
P: 706.342.1104

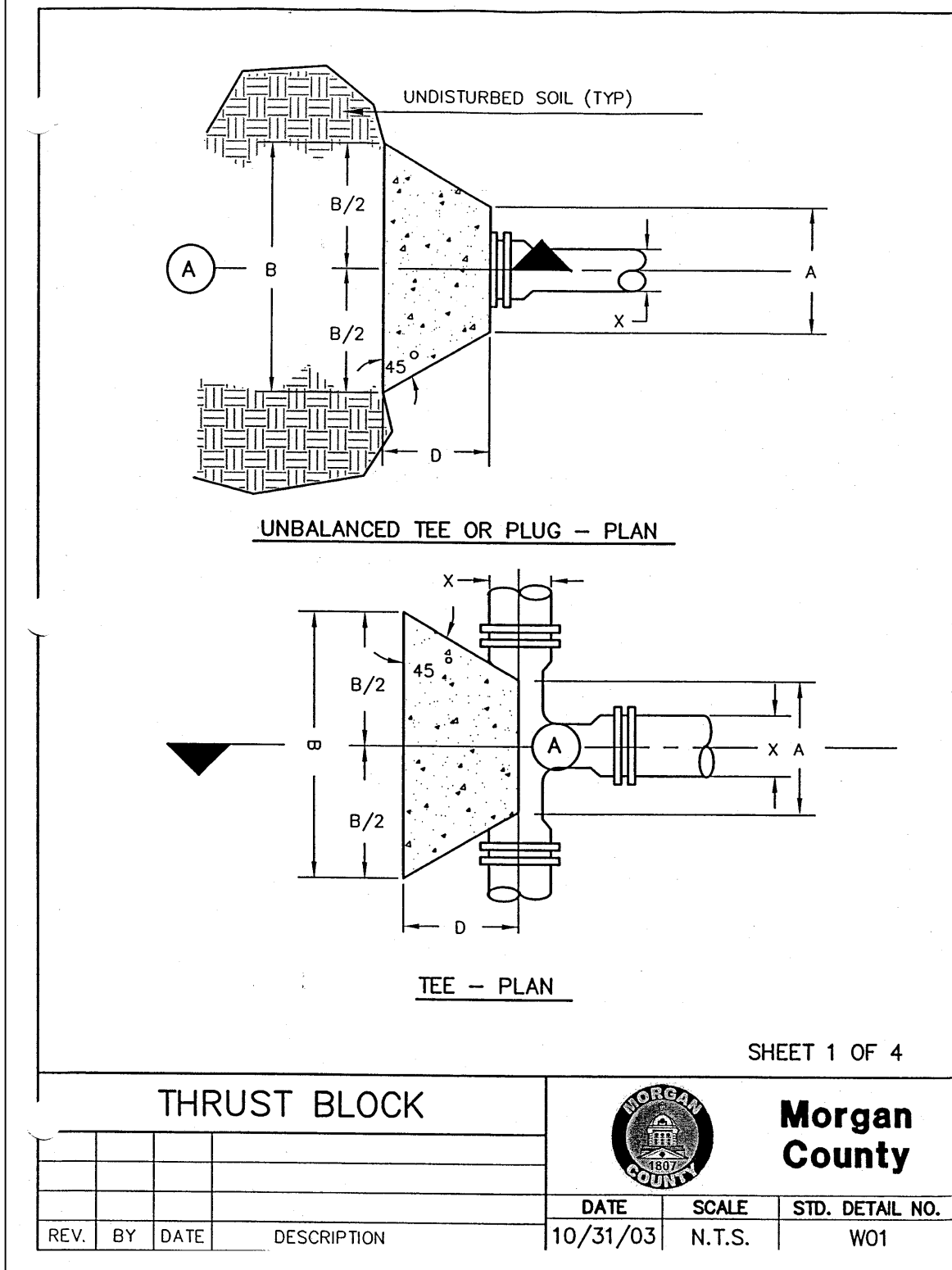
www.georgiacivil.com

Professional Seal



Project Information

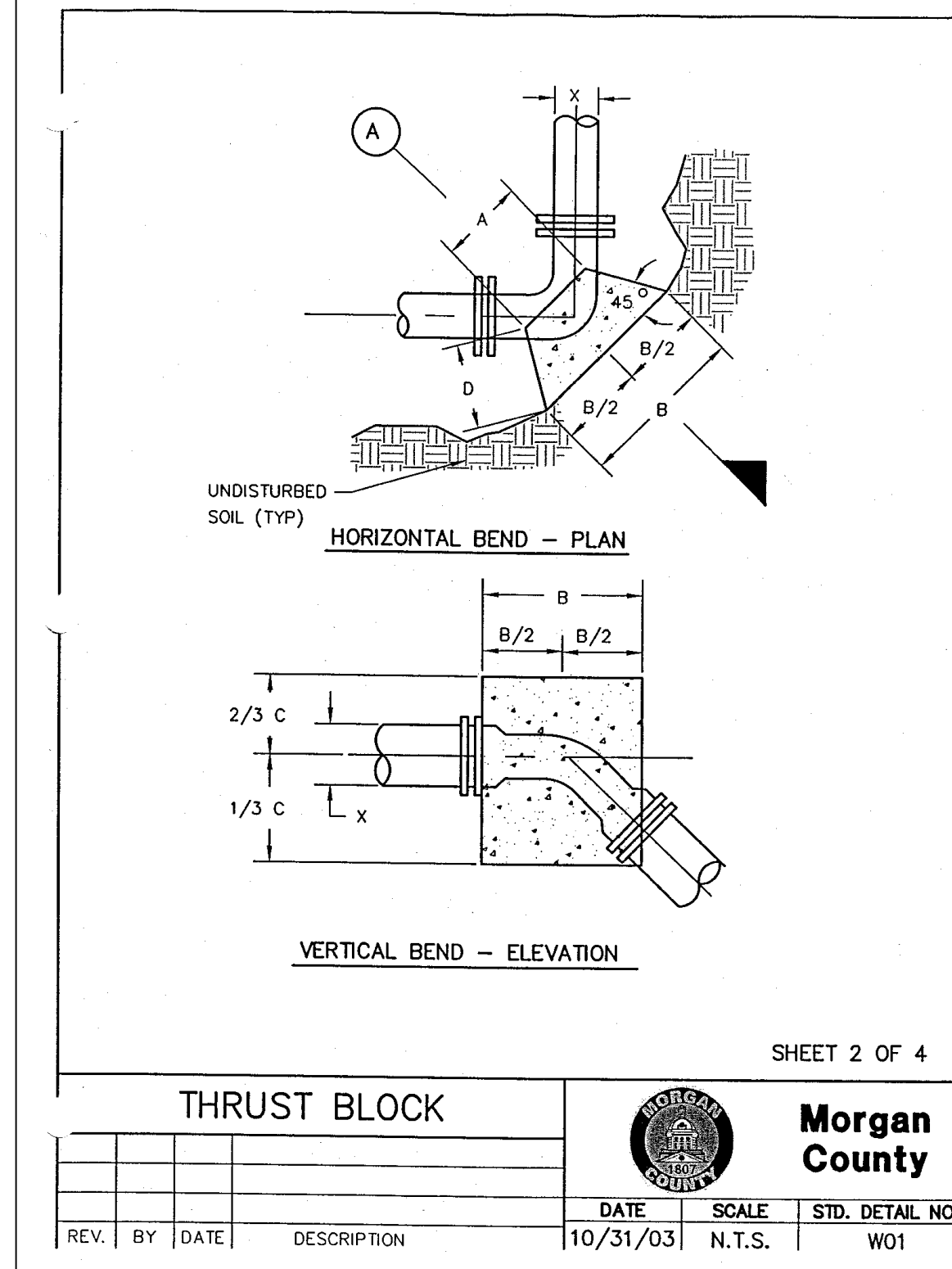
MADISON METHODIST CHURCH
1091 CONFEDERATE RD
MADISON, GA 30650
ZONING: R1



THRUST BLOCK

Morgan County

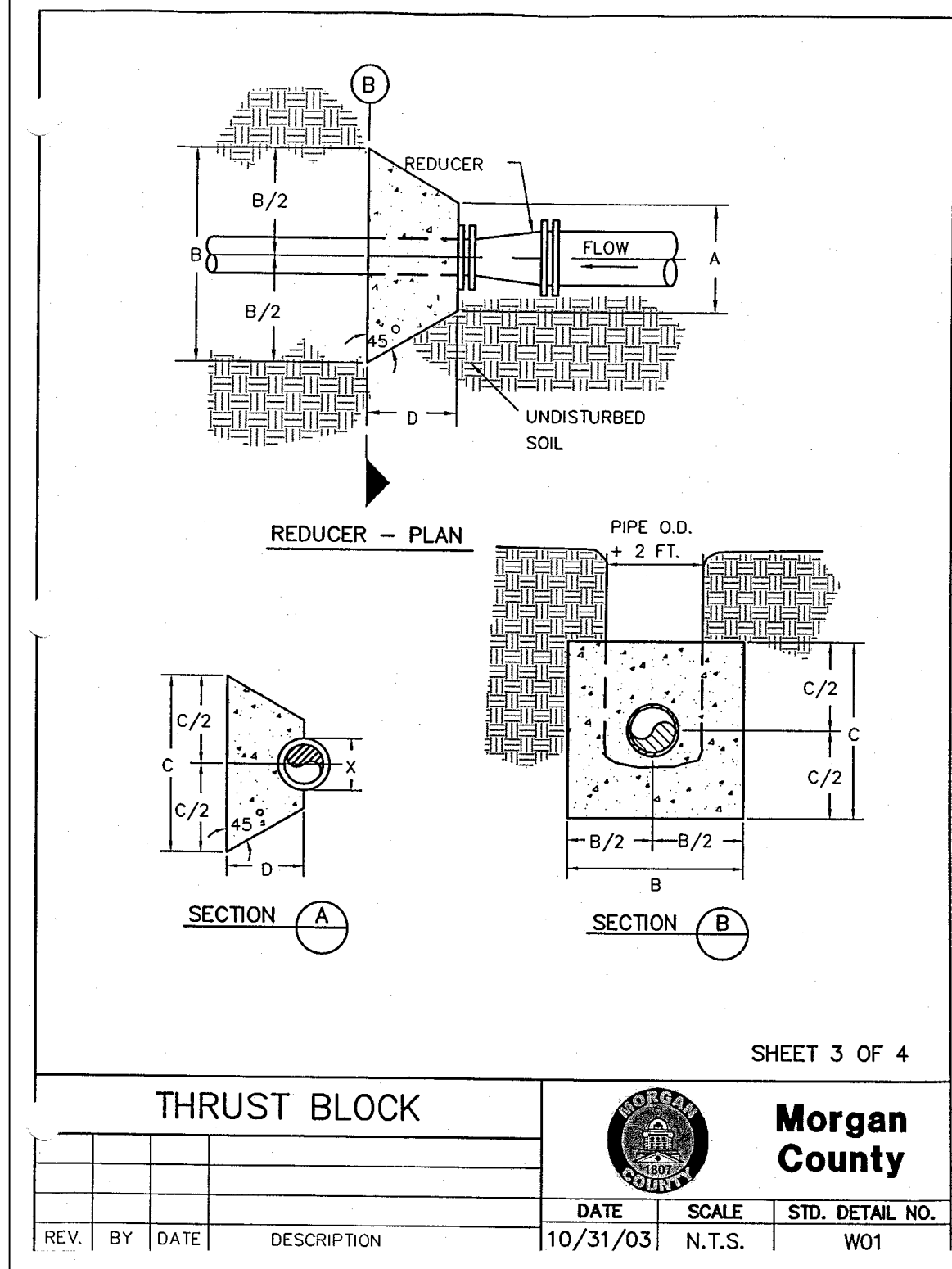
REV.	BY	DATE	DESCRIPTION
1		10/31/03	



THRUST BLOCK

Morgan County

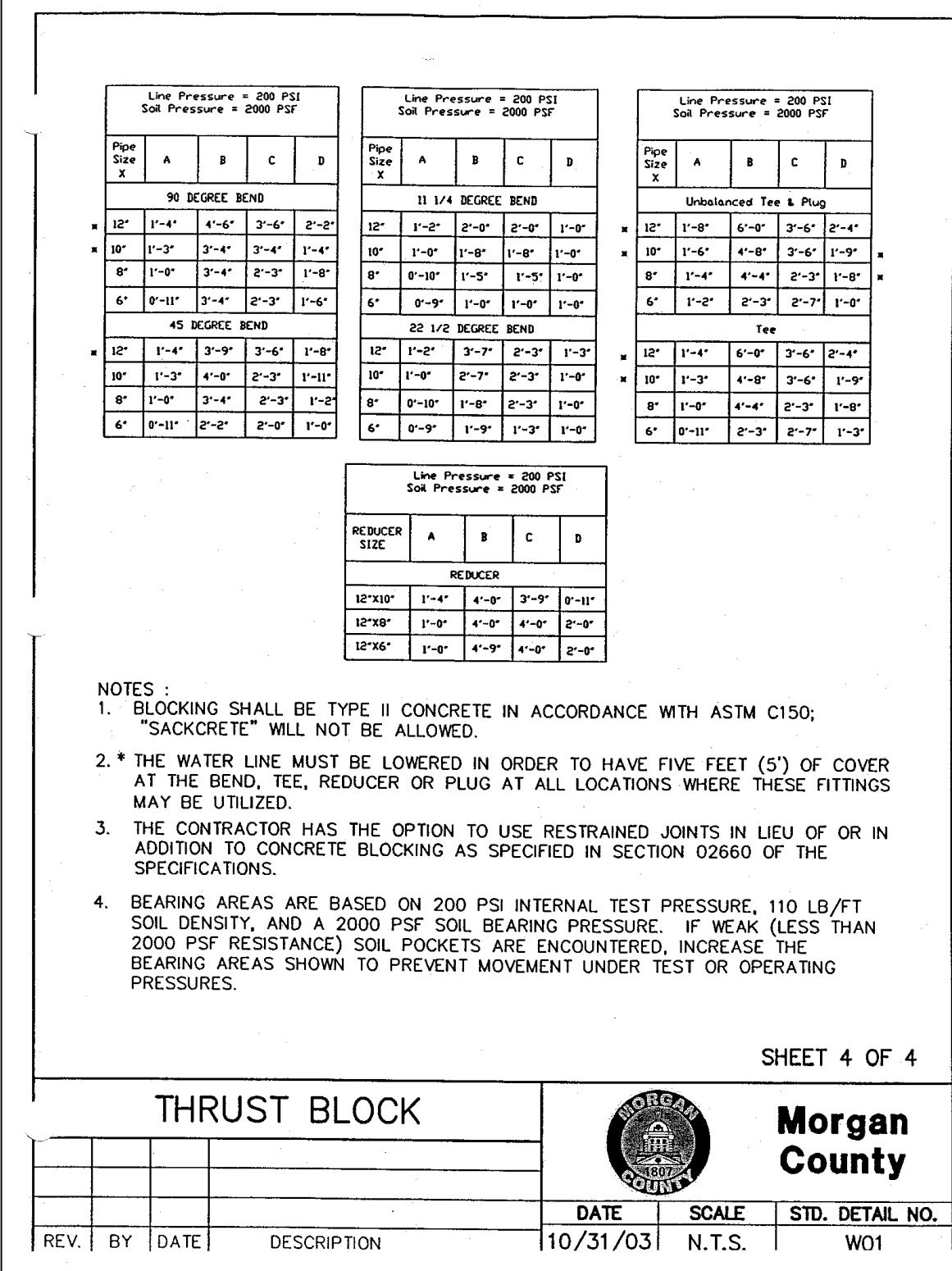
REV.	BY	DATE	DESCRIPTION
1		10/31/03	



THRUST BLOCK

Morgan County

REV.	BY	DATE	DESCRIPTION
1		10/31/03	



THRUST BLOCK

Morgan County

REV.	BY	DATE	DESCRIPTION
1		10/31/03	

24-HOUR CONTACT
XXXXXX
(XXX) XXX-XXXX

GEORGIA811
www.Georgia811.com

Contact 811 before you dig

Utilities/Services shown are for Contractor's convenience. Items are shown schematically and neither the site design professional nor the owner assumes any responsibility for accuracy in their actual location. This plan may not show and/or may incorrectly show utilities located on site. Contractor shall be responsible to secure and use the services of a private utility locator firm during the entire course of work and shall pay for said services. Contractor shall locate utilities prior to any disturbance including field verifying location and depth of utilities that are to be saved and protected. Contractor shall notify the site design professional of any utility conflicts prior to installation of new utilities, grading, etc. The Contractor, at their expense, shall be responsible to repair, replace and/or relocate, as necessary, any utilities damaged, whether shown or not. Abandonment, relocation, etc. of utilities shall be coordinated with the respective utility company.

DRAWING DATE: 01.22.25
DRAWN BY: MCS
CHECKED BY: JPB

REVISIONS
DATE: 04-14-25
01-26-26
DESCRIPTION: ADDRESS COMMENTS
PERMIT REVISION

Copyright 2025 georgia civil, inc.
This document and its reproduction are the property of Georgia Civil, Inc. and may not be reproduced, published, or used in whole or in part without the written consent of Georgia Civil, Inc.

Sheet Title

SITE DETAILS

Sheet Number

C-8.0