



georgia civil
CIVIL ENGINEERING
LANDSCAPE ARCHITECTURE
LAND SURVEYING

311 N. Main St. Ste. 101, Unit C
P.O. Box 896 | Madison, GA 30650
P: 706.342.1104

www.georgiacivil.com

Professional Seal



Project Information

MADISON METHODIST CHURCH
1091 CONFEDERATE RD
MADISON, GA 30650
ZONING: R1

DRAWING DATE: 01.22.25
DRAWN BY: MCS
CHECKED BY: JPB

REVISIONS
DATE: 04-14-25 DESCRIPTION: ADDRESS COMMENTS
01-26-26 PERMIT REVISION

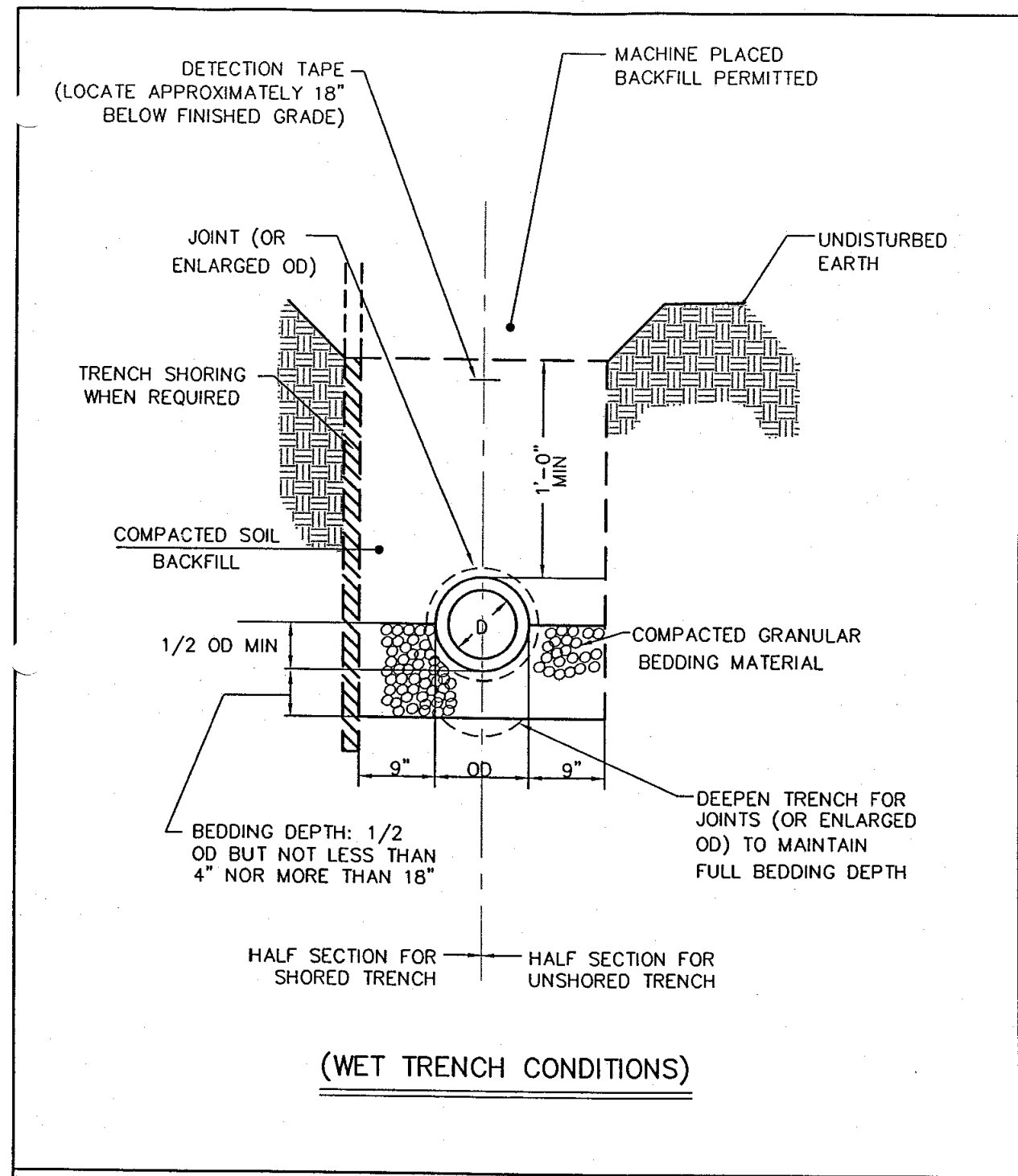
© Copyright 2025 georgia civil, inc.
This document and its reproduction are the property of Georgia Civil, Inc. and may not be reproduced, published, or used in whole or in part without the written consent of Georgia Civil, Inc.

Sheet Title

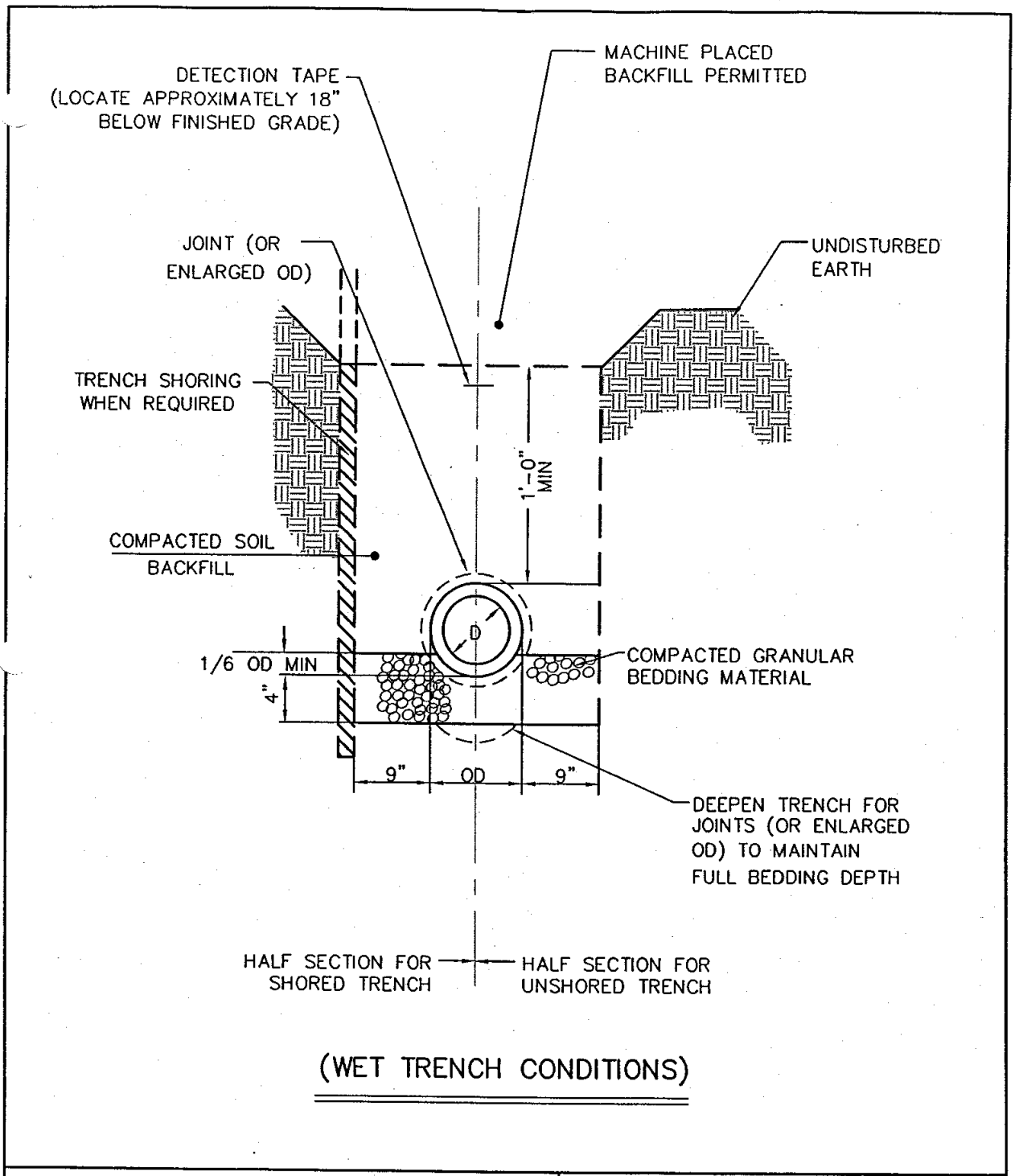
SITE DETAILS

Sheet Number

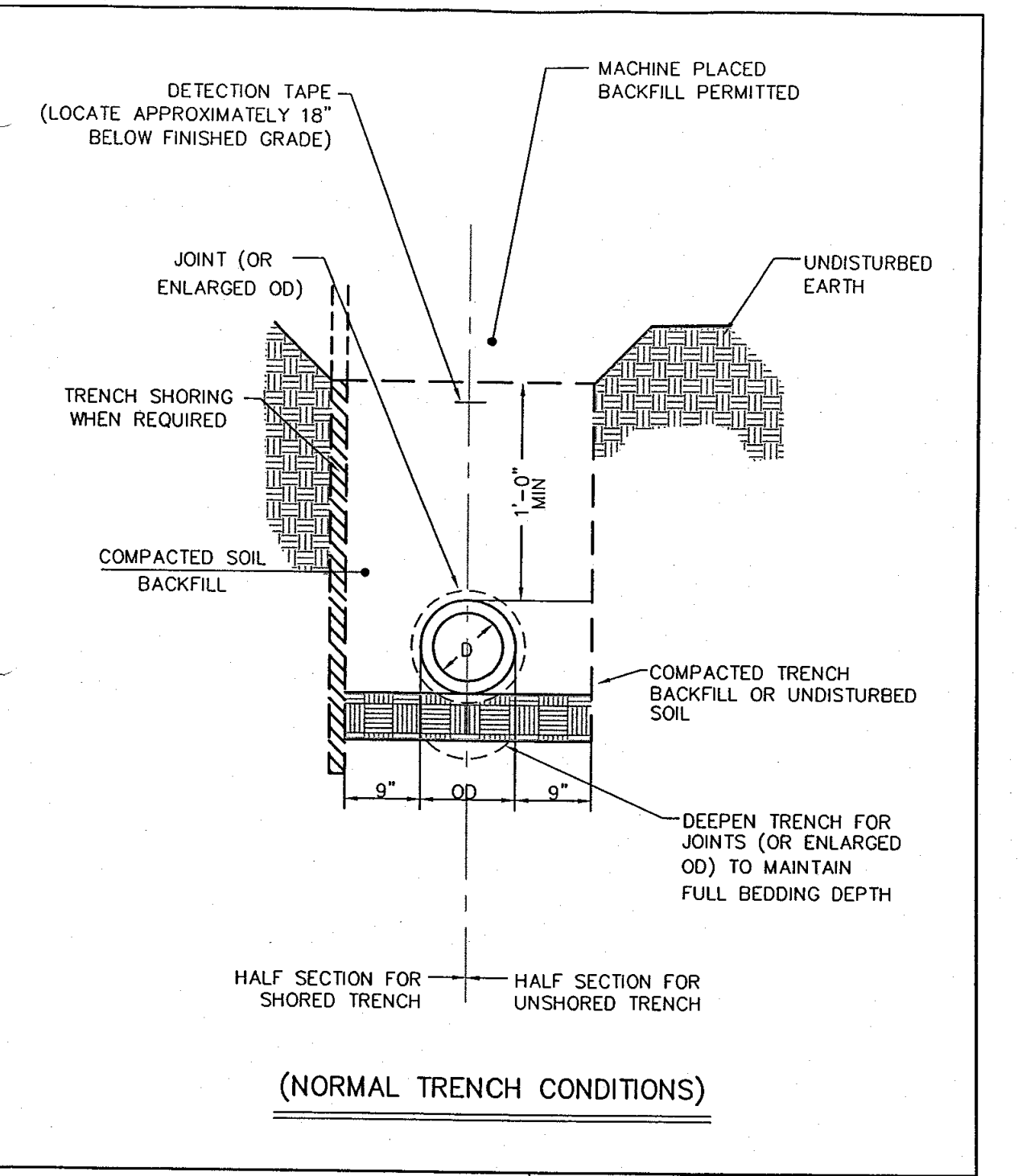
C-8.1



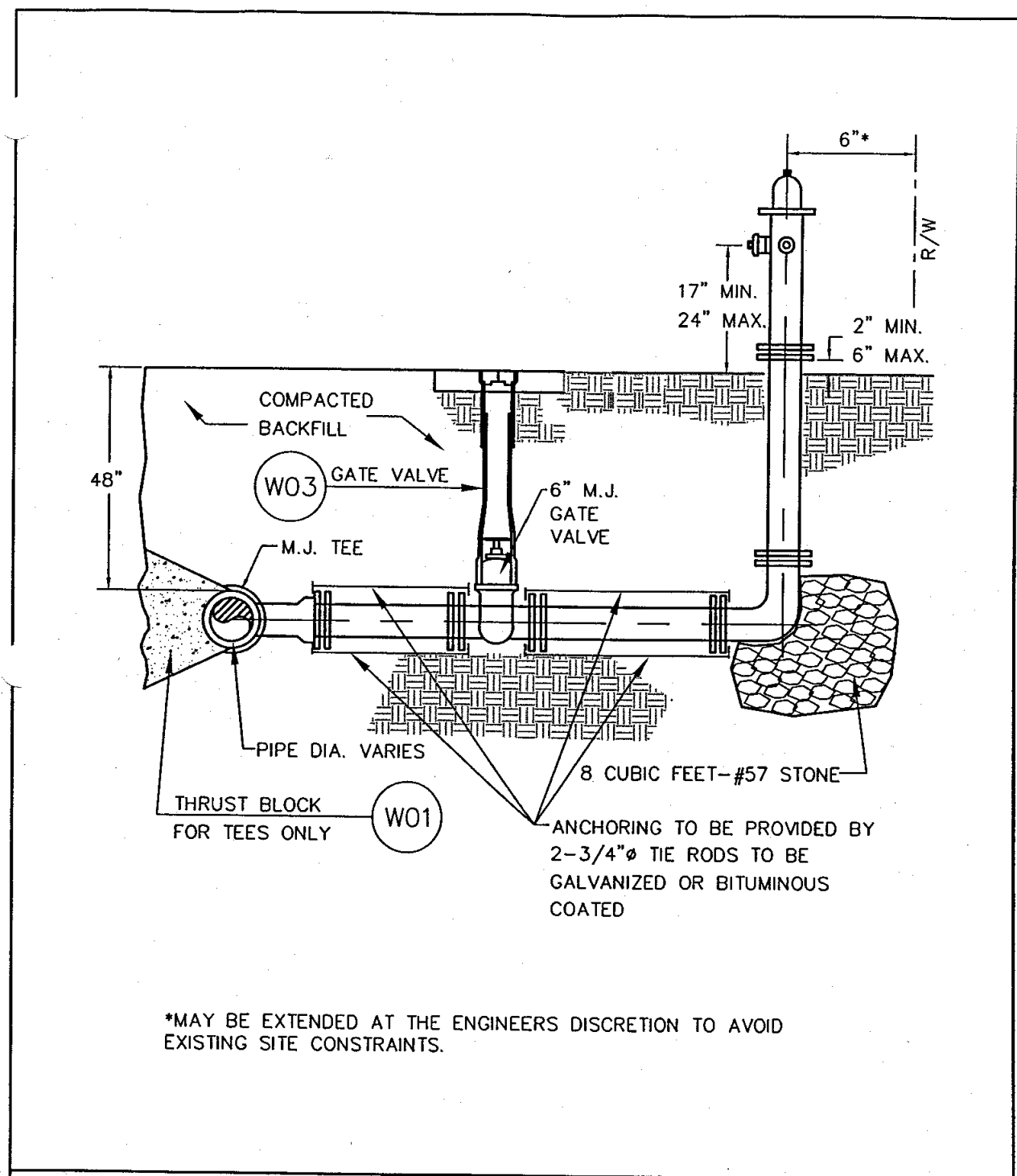
CLASS 'B' BEDDING				Morgan County			
REV.	BY	DATE	DESCRIPTION	DATE	SCALE	STD. DETAIL NO.	
		10/31/03	N.T.S.			W16	



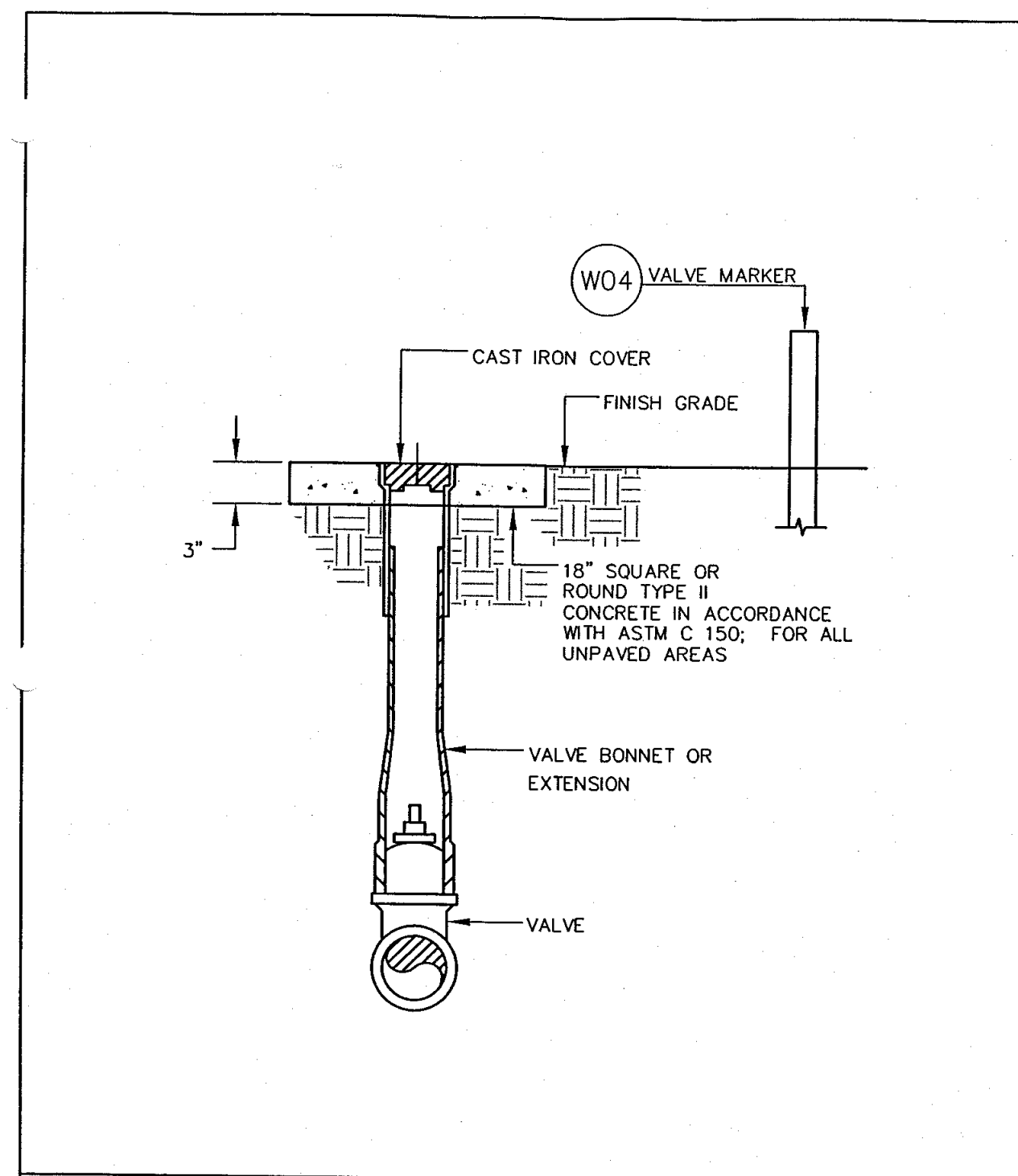
CLASS 'C' BEDDING				Morgan County			
REV.	BY	DATE	DESCRIPTION	DATE	SCALE	STD. DETAIL NO.	
		10/31/03	N.T.S.			W17	



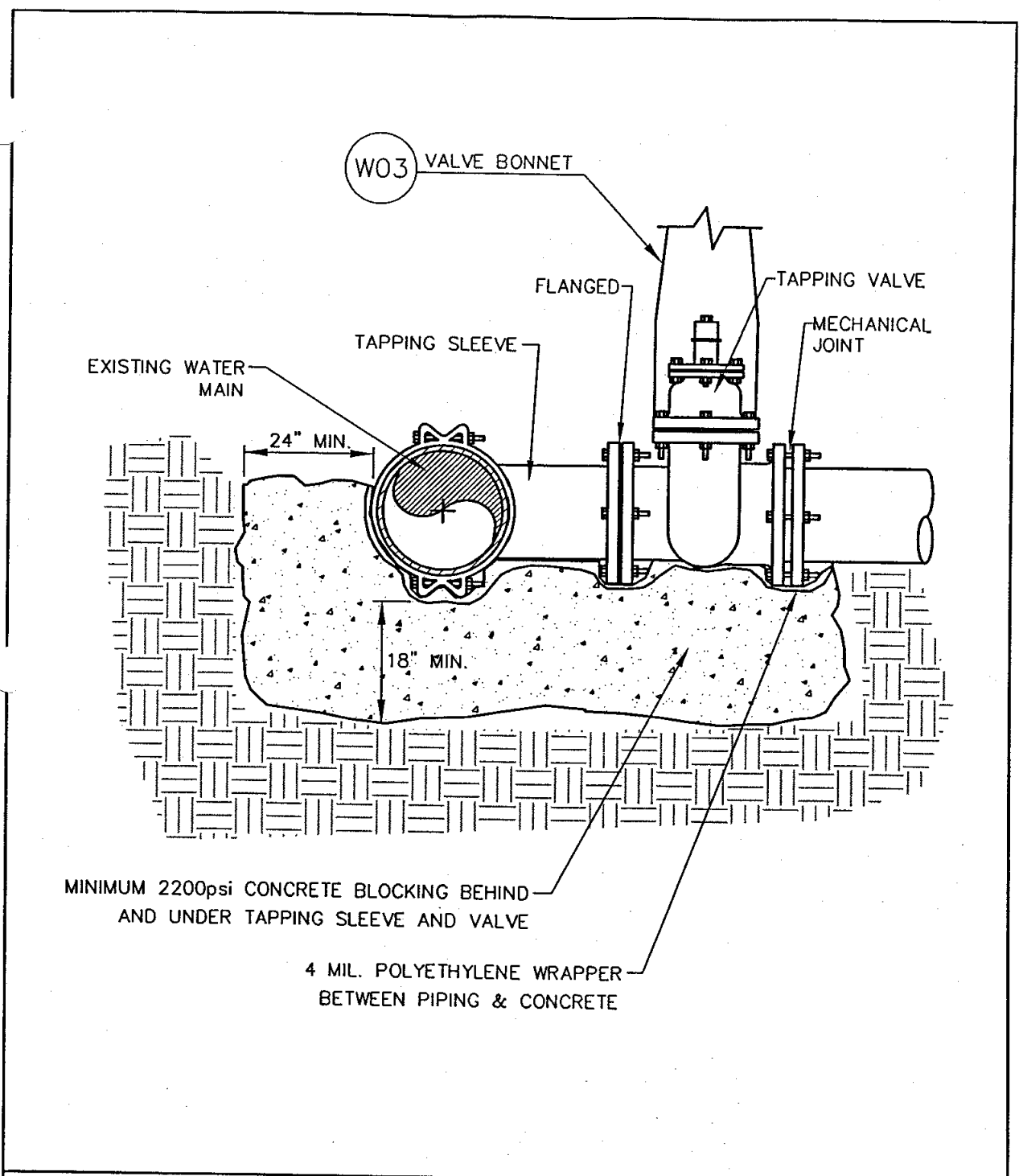
CLASS 'D' BEDDING				Morgan County			
REV.	BY	DATE	DESCRIPTION	DATE	SCALE	STD. DETAIL NO.	
		10/31/03	N.T.S.			W18	



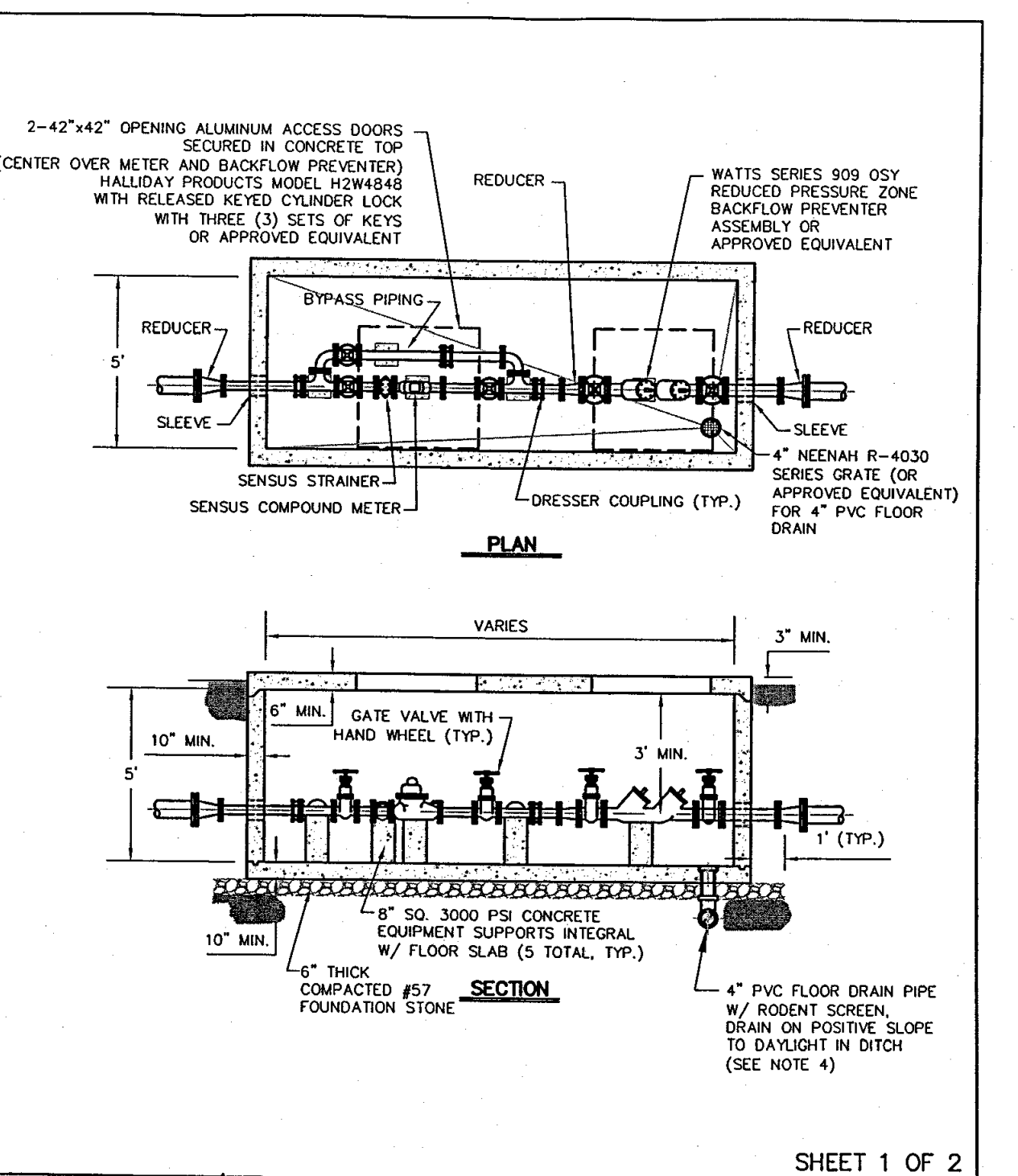
FIRE HYDRANT ASSEMBLY				Morgan County			
REV.	BY	DATE	DESCRIPTION	DATE	SCALE	STD. DETAIL NO.	
		10/31/03	N.T.S.			W02	



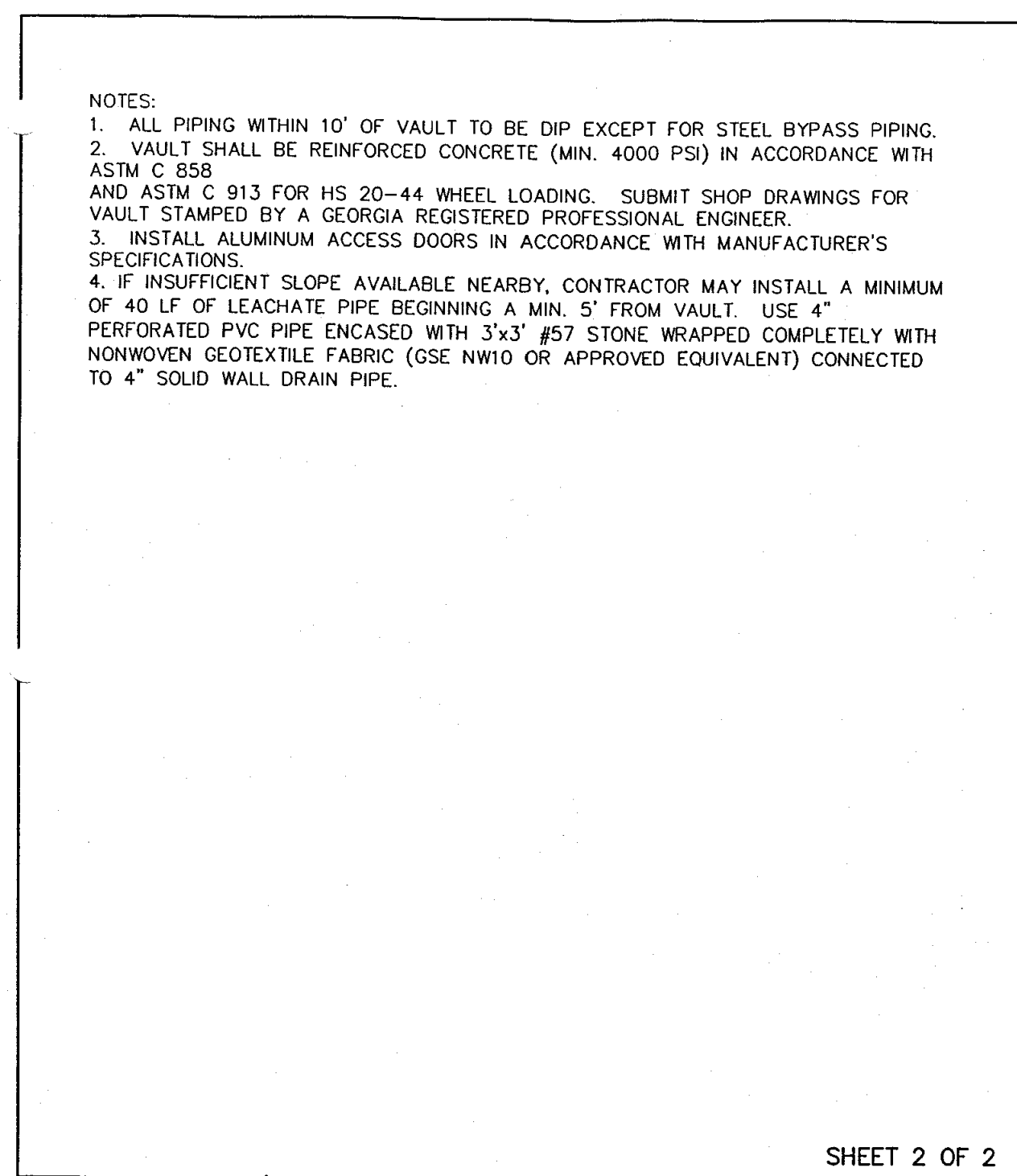
GATE VALVE				Morgan County			
REV.	BY	DATE	DESCRIPTION	DATE	SCALE	STD. DETAIL NO.	
		10/31/03	N.T.S.			W03	



TAPPING SLEEVE & VALVE				Morgan County			
REV.	BY	DATE	DESCRIPTION	DATE	SCALE	STD. DETAIL NO.	
		10/31/03	N.T.S.			W05	



METER/BACKFLOW PREVENTER & VAULT				Morgan County			
REV.	BY	DATE	DESCRIPTION	DATE	SCALE	STD. DETAIL NO.	
		10/31/03	N.T.S.			W07	



METER/BACKFLOW PREVENTER & VAULT				Morgan County			
REV.	BY	DATE	DESCRIPTION	DATE	SCALE	STD. DETAIL NO.	
		10/31/03	N.T.S.			W07	

VICTOR SITE SET 02-04-2026