

GENERAL NOTES:

- A. ALL FLUSH RECESSED OUTLET BOXES SHALL BE INSTALLED SUCH THAT FRONT EDGE OF THE BOX WILL NOT BE SET BACK OF THE FINISHED SURFACE MORE THAN 1/4IN. IN ORDER TO COMPLY WITH N.E.C. 314-20, SUPPORT OF OUTLET BOX BY RECEPTACLE AND COVERPLATE IS NOT ACCEPTABLE. CAREFULLY COORDINATE ROUGH-IN WITH BLOCK MASONS AND GROUT-IN CELL CONTAINING OUTLET BOX.
- B. DO NOT SCALE DRAWINGS TO LOCATE EQUIPMENT OR OUTLETS. MOUNTING HEIGHTS AS INDICATED ON THE DRAWINGS SHALL BE FROM THE FINISHED FLOOR TO THE CENTER LINE OF THE OUTLET BOX.
- C. THE ELECTRICAL DRAWINGS ARE ONLY A PART OF THE CONTRACT DOCUMENTS. ALL OF THE DRAWINGS AND SPECIFICATIONS MUST BE REVIEWED FOR THEIR INTERRELATIONSHIP AND REQUIRED COORDINATION BETWEEN DISCIPLINES.
- D. ALL RECEPTACLES SHALL BE TAMPER RESISTANT (TYPE "TR").

SECTION E01: FIRE ALARM SUBCONTRACTOR SUBMITTAL REQUIREMENTS TO AUTHORITY HAVING JURISDICTION:

IN ACCORDANCE WITH CHAP. 7, NFPA 72 THE FOLLOWING LIST REPRESENTS THE MINIMUM DOCUMENTATION REQUIRED BY THE AUTHORITY HAVING JURISDICTION FOR ALL FIRE ALARM SYSTEMS:

1. THE PRINTED NAME, SIGNATURE AND COPY OF CURRENT GEORGIA LICENSE OF THE LOW VOLTAGE CONTRACTOR WHO IS SUBMITTING THE FIRE ALARM SYSTEM FOR REVIEW AND WHO WILL BE RESPONSIBLE FOR INSTALLATION.

2. WRITTEN NARRATIVE PROVIDING INTENT AND SYSTEM DESCRIPTION.

3. A FIRE ALARM RISER DIAGRAM.

4. A FLOOR PLAN LAYOUT WITH ROOM NAMES, DOOR LOCATIONS, FIXTURES (DRAWN TO SCALE) SHOWING LOCATION OF ALL DEVICES AND CONTROL EQUIPMENT. DEVICES AND EQUIPMENT SHOWN ON DRAWINGS IS THE MINIMUM REQUIRED. PROVIDE ALL ADDITIONAL DEVICES AND EQUIPMENT AS REQUIRED TO MEET ALL NFPA, IBC, GEORGIA STATE AND LOCAL CODES.

5. THE FIRE ALARM SYSTEM WIRING LAYOUT DESIGN WHICH INCLUDES THE GAUGE(S) OF WIRING INSTALLED.

6. THE SEQUENCE OF OPERATION IN EITHER INPUT/OUTPUT MATRIX OR NARRATIVE FORM.

7. EQUIPMENT TECHNICAL DATA SHEETS FOR ALL COMPONENTS SPECIFIED IN THE FIRE ALARM SYSTEM DESIGN.

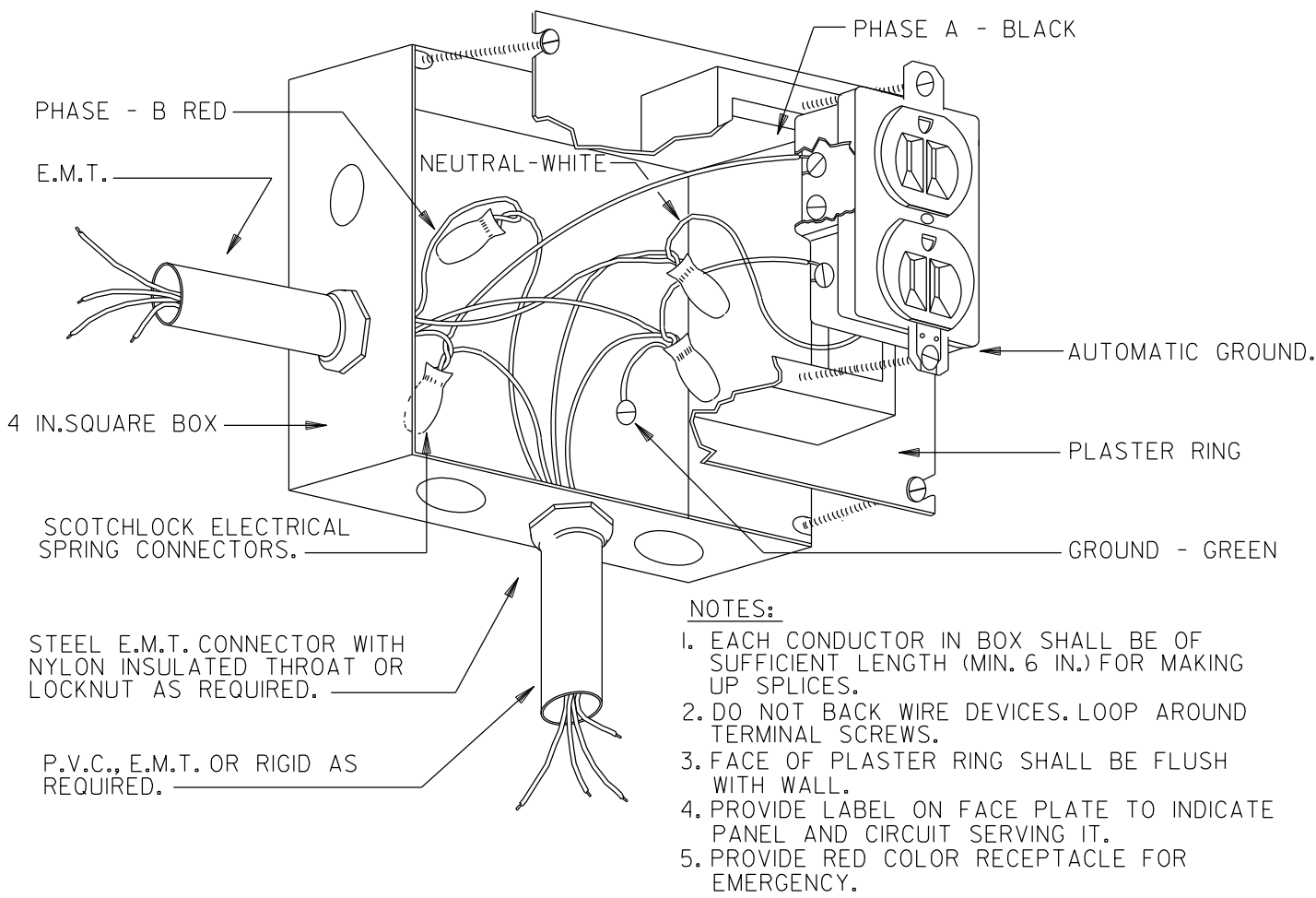
8. MANUFACTURERS PUBLISHED INSTRUCTIONS, INCLUDING OPERATION AND MAINTENANCE INSTRUCTIONS.

9. BATTERY CALCULATIONS.

10. A SET OF NAC VOLTAGE DROP/LOAD CALCULATIONS.

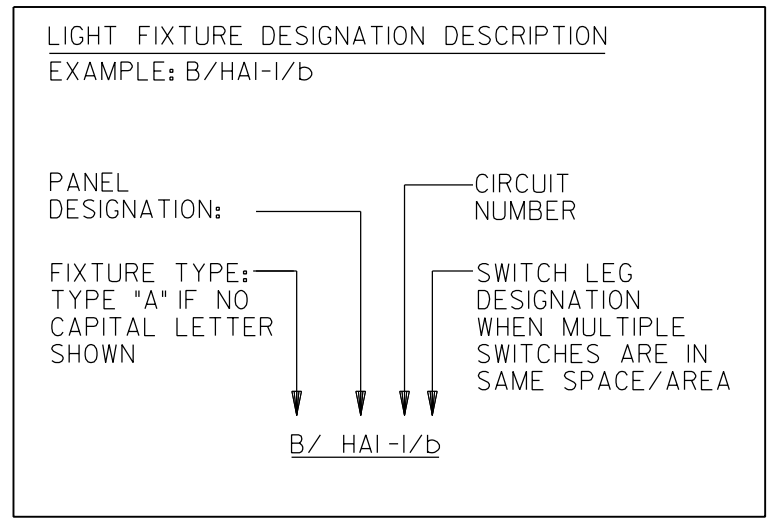
11. SPEAKER WATTAGES AND DECIBEL RATINGS FOR BOTH HORN ALARM AND VOICE EVACUATION SYSTEM COMPONENTS.

12. THE CANDLEA RATING SHOWN FOR DRAWINGS FOR EACH STROBE/VISUAL DEVICE AND EACH ILLUMINATED EMERGENCY EXIT SIGN FIRE ALARM SYSTEM MUST COMPLY WITH THE GEORGIA ACCESSIBILITY CODE (420-3-20), LIFE SAFETY CODE (NFPA 101) AND THE NATIONAL FIRE ALARM CODE (NFPA 72).



RECEPTACLE CONNECTION DETAIL

E.O.1 NOT TO SCALE



PROVIDE ALL BRANCH CIRCUIT CONDUIT/CONDUCTORS AS NECESSARY TO CONNECT ALL DEVICES SHOWN ON THE CIRCUIT. PROVIDE DEDICATED NEUTRALS FOR ALL CIRCUITS. (STRIPED NEUTRAL WITH PHASE COLOR STRIPING)

LIGHTING FIXTURE SCHEDULE

TYPE	DESCRIPTION	MANUFACTURER	TYPE	DESCRIPTION	MANUFACTURER
A2	2 FT. X 4 FT. ECONOMY RECESSED LOW PROFILE ARCHITECTURAL TROFFER WITH ACRYLIC CENTER LENS AND MATTE WHITE POWDER PAINT REFLECTOR; STANDARD 0-10 DIMMING; FIELD SELECTABLE LUMEN AND COLOR TEMP. PROVIDE 10 WATT BATTERY PACK WHERE SHOWN ON PLANS. LAMPS: LED, 5000 LUMENS, 40 WATTS, 3000 DEGREE K DRIVER: UNV. VOLT	LITHONIA "STAK" SER., COLUMBIA "CLT" SER., METALUX "ACHIEVA" SER.	L2	6 IN. ROUND COMMERCIAL GRADE CYLINDER, PENDANT MOUNTED, WIDE DISTRIBUTION, 0-10 DIMMING TO 1%, PROVIDE MOUNTED BRACKET OR CANOPY AS REQUIRED. LAMPS: LED, 2000 LUMENS, 23 WATTS, 3000 DEGREE K DRIVER: UNV. VOLT	LITHONIA "LDN6CYL" SER., HALO COMMERCIAL "HC6" SER., RAYON "RFL-6" SER.
A3	2 FT. X 4 FT. ECONOMY RECESSED LOW PROFILE ARCHITECTURAL TROFFER WITH ACRYLIC CENTER LENS AND MATTE WHITE POWDER PAINT REFLECTOR; STANDARD 0-10 DIMMING; FIELD SELECTABLE LUMEN AND COLOR TEMP. PROVIDE 10 WATT BATTERY PACK WHERE SHOWN ON PLANS. LAMPS: LED, 4000 LUMENS, 32 WATTS, 3000 DEGREE K DRIVER: UNV. VOLT	LITHONIA "STAK" SER., COLUMBIA "CLT" SER., METALUX "ACHIEVA" SER.	M	6 IN. ROUND COMMERCIAL GRADE CYLINDER, PENDANT MOUNTED, WALLWASH DISTRIBUTION, 0-10 DIMMING TO 1%, PROVIDE MOUNTED BRACKET OR CANOPY AS REQUIRED. COORDINATE COLOR AND STEM LENGTH WITH ARCHITECT. LAMPS: LED, 2500 LUMENS, 29 WATTS, 3000 DEGREE K DRIVER: UNV. VOLT	LITHONIA "LDN6CYL" SER., HALO COMMERCIAL "HC6" SER., RAYON "RFL-6" SER.
B1	2 FT. X 4 FT. ECONOMY RECESSED LOW PROFILE ARCHITECTURAL TROFFER WITH ACRYLIC CENTER LENS AND MATTE WHITE POWDER PAINT REFLECTOR; STANDARD 0-10 DIMMING; FIELD SELECTABLE LUMEN AND COLOR TEMP. PROVIDE 10 WATT BATTERY PACK WHERE SHOWN ON PLANS. LAMPS: LED, 5000 LUMENS, 41 WATTS, 3000 DEGREE K DRIVER: UNV. VOLT	LITHONIA "STAK" SER., COLUMBIA "CLT" SER., METALUX "ACHIEVA" SER.	N	COMMERCIAL GRADE WALL WASH DOWNLIGHT, RECESSED SELF FLANGED, 4 IN. ROUND APERTURE, SPECULAR REFLECTOR FINISH; FIELD ADJUSTABLE WASH/AIMING / ROTATING; ACCESS FROM BELOW OR ABOVE CEILING; STANDARD 0-10 DIMMING. LAMPS: LED, 1500 LUMENS, 19 WATTS, 3000 DEGREE K DRIVER: UNV. VOLT	LITHONIA "LDN4" SER., HALO COMMERCIAL "HC4" SER., PRESCOLITE "LFR-4RD" SER.
B2	2 FT. X 4 FT. ECONOMY RECESSED LOW PROFILE ARCHITECTURAL TROFFER WITH ACRYLIC CENTER LENS AND MATTE WHITE POWDER PAINT REFLECTOR; STANDARD 0-10 DIMMING; FIELD SELECTABLE LUMEN AND COLOR TEMP. PROVIDE 10 WATT BATTERY PACK WHERE SHOWN ON PLANS. LAMPS: LED, 4000 LUMENS, 35 WATTS, 3000 DEGREE K DRIVER: UNV. VOLT	LITHONIA "STAK" SER., COLUMBIA "CLT" SER., METALUX "ACHIEVA" SER.	P	2 IN. LINEAR PENDANT LED, 17 FT. CONTINUOUS ROW INSTALLATION, UPPER HOUSING STEEL WITH EXTRUDED ALUMINUM TRIM, BI-DIRECT DISTRIBUTION, STANDARD 0-10 DIMMING. COORDINATE FINISH WITH OWNER. LAMPS: LED, 10200 LUMENS, 5100 LUMENS UP, 136 WATTS, 3000 DEGREE K DRIVER: UNV. VOLT	NULITE "RP24 B" SER., FOCAL POINT "SEEM2" SER., PINNACLE "EDGE EV40" SER., FINELITE "HP-2" SER.
B3	2 FT. X 4 FT. ECONOMY RECESSED LOW PROFILE ARCHITECTURAL TROFFER WITH ACRYLIC CENTER LENS AND MATTE WHITE POWDER PAINT REFLECTOR; STANDARD 0-10 DIMMING; FIELD SELECTABLE LUMEN AND COLOR TEMP. PROVIDE 10 WATT BATTERY PACK WHERE SHOWN ON PLANS. LAMPS: LED, 3000 LUMENS, 25 WATTS, 3000 DEGREE K DRIVER: UNV. VOLT	LITHONIA "STAK" SER., COLUMBIA "CLT" SER., METALUX "ACHIEVA" SER.	Q1	CYLINDRA STYLE LED TRACK HEAD, HIGH POWERED, ALL-METAL HOUSING, 360 HORIZONTAL COVERAGE AND GREATER THAN 90 DEGREE VERTICAL AIMING, NARROW DISTRIBUTION; ELV DIMMING. LAMPS: LED, 5500 LUMENS, 55 WATTS, 3000 DEGREE K DRIVER: UNV. VOLT	ACUITY "T388L" SER.
C1	NOMINAL 7 IN. WIDE, 48 IN. LONG, CONTEMPORARY STYLED SURFACE MOUNT WRAP FIXTURE, LOW PROFILE DESIGN, WITH ROUNDED RIBBED POLYCARBONATE LENS; DAMP LOCATION LISTED, STANDARD 0-10 DIMMING. PROVIDE 10 WATT BATTERY PACK WHERE SHOWN ON PLANS. LAMPS: LED, 6000 LUMENS, 49 WATTS, 3000 DEGREE K DRIVER: UNV. VOLT	LITHONIA "BLWP" SER., METALUX "NWS" SER., COLUMBIA "RLW" SER.	Q2	CYLINDRA STYLE LED TRACK HEAD, HIGH POWERED, ALL-METAL HOUSING, 360 HORIZONTAL COVERAGE AND GREATER THAN 90 DEGREE VERTICAL AIMING, FLOOD DISTRIBUTION; ELV DIMMING. LAMPS: LED, 5500 LUMENS, 55 WATTS, 3000 DEGREE K DRIVER: UNV. VOLT	ACUITY "T388L" SER.
C2	NOMINAL 7 IN. WIDE, 48 IN. LONG, CONTEMPORARY STYLED SURFACE MOUNT WRAP FIXTURE, LOW PROFILE DESIGN, WITH ROUNDED RIBBED POLYCARBONATE LENS; DAMP LOCATION LISTED, STANDARD 0-10 DIMMING. PROVIDE 10 WATT BATTERY PACK WHERE SHOWN ON PLANS. LAMPS: LED, 4000 LUMENS, 35 WATTS, 3000 DEGREE K DRIVER: UNV. VOLT	LITHONIA "BLWP" SER., METALUX "NWS" SER., COLUMBIA "RLW" SER.	Q3	CYLINDRA STYLE LED TRACK HEAD, HIGH POWERED, ALL-METAL HOUSING, 360 HORIZONTAL COVERAGE AND GREATER THAN 90 DEGREE VERTICAL AIMING, WIDE FLOOD DISTRIBUTION; ELV DIMMING. LAMPS: LED, 5500 LUMENS, 55 WATTS, 3000 DEGREE K DRIVER: UNV. VOLT	ACUITY "T388L" SER.
D	COMMERCIAL GRADE DOWNLIGHT, RECESSED SELF FLANGED, 4 IN. ROUND APERTURE, SPECULAR REFLECTOR FINISH; ACCESS FROM BELOW OR ABOVE CEILING; STANDARD 0-10 DIMMING. PROVIDE 10 WATT BATTERY PACK WHERE SHOWN ON PLANS. LAMPS: LED, 2000 LUMENS, 22 WATTS, 3000 DEGREE K DRIVER: UNV. VOLT	LITHONIA "LDN4" SER., HALO COMMERCIAL "HC4" SER., PRESCOLITE "LFR-4RD" SER.	Q8	ARCHITECTURAL SCONCE TO BE SELECTED BY OWNER/ARCHITECT. PROVIDE \$950 ALLOWANCE FOR LIGHTING FIXTURE ONLY. COST OF INSTALLATION MUST ALSO BE INCLUDED SEPARATELY FROM ALLOWANCE. COORDINATE MOUNTING HEIGHT WITH OWNER/ARCHITECT. LAMPS: LED, 60 WATTS MAX, 4000 DEGREE K DRIVER: UNV. VOLT	TBD
E	4 FT. LENSED LED STRIPLIGHT, WITH ROUND FROSTED DIFFUSE LENS, SURFACE OR PENDANT MOUNTED, STANDARD 0-10 DIMMING. PROVIDE 10 WATT BATTERY PACK WHERE SHOWN ON PLANS. LAMPS: LED, 5000 LUMENS, 42 WATTS, 3000 DEGREE K DRIVER: UNV. VOLT	LITHONIA "CLT" SER., METALUX "SNV" SER., COLUMBIA "MPS" SER.	OC	BUILDING MOUNTED WALL PACK WITH DIE-CAST ALUMINUM HOUSING AND GLASS LENS; UL LISTED FOR WET LOCATION; FIELD SELECTABLE LUMEN AND COLOR TEMP. COORDINATE FINISH WITH ARCHITECT. PROVIDE 7 WATT BATTERY PACK WHERE SHOWN ON PLANS. WALL MOUNT FIXTURE AT 10'-0" A.F.F. UNLESS NOTED OTHERWISE ON THE PLANS. LAMPS: LED, 2300 LUMENS, 16 WATTS, 4000 DEGREE K DRIVER: UNV. VOLT	LITHONIA "TWR1 LED" SER., LUMARK AP "WPM" SER., EXO "WGH LED" SER.
F1	TWO LIGHT WALL SCONCE, STEEL CONSTRUCTION, WHITE LINEN SHADE, AGED BRONZE FINISH. LAMPS: LED (2), TYPE A/E26 BASE, 40 WATTS MAX, 3000 DEGREE K DRIVER: 120V	ARTERIONS "BLADE SCONCE" SER.	OD	BUILDING MOUNTED WALL PACK WITH DIE-CAST ALUMINUM HOUSING AND GLASS LENS; UL LISTED FOR WET LOCATION; FIELD SELECTABLE LUMEN AND COLOR TEMP. COORDINATE FINISH WITH ARCHITECT. PROVIDE 7 WATT BATTERY PACK WHERE SHOWN ON PLANS. WALL MOUNT FIXTURE AT 12'-0" A.F.F. UNLESS NOTED OTHERWISE ON THE PLANS. LAMPS: LED, 5300 LUMENS, 36 WATTS, 4000 DEGREE K DRIVER: UNV. VOLT	LITHONIA "TWR1 LED" SER., LUMARK AP "WPM" SER., EXO "WGH LED" SER.
F2	FOUR LIGHT PENDANT LANTERN, IRON CONSTRUCTION, GOLD SILVER LEAF FINISH. LAMPS: LED (4), E12 BASE, 60 WATTS MAX, 3000 DEGREE K DRIVER: 120V	TROY LIGHTING "MORGAN 4 LIGHT" SER.	OE	LED EDGE-LIT, SATIN ALUMINUM HOUSING, HIGH-GRADE ACRYLIC PANEL, UNIVERSAL MOUNTING STANDARD, SINGLE OR DOUBLE FACE AS SHOWN ON PLANS. (PROVIDE 90 MIN. BACK-UP BATTERY). LAMPS: LED, 3 WATTS BALLAST: UNV. VOLT	LIGHTALARMS "BLENM" SER., OR EQUAL BY COMPASS, SURELITES
F3	2 FT. LED VANITY LIGHT, METAL CONSTRUCTION, BRASS FINISH. LAMPS: LED, 1500 LUMENS, 25 WATTS, 3000 DEGREE K DRIVER: 120V	HUXE LIGHTING "LENMORE LED VANITY" SER.	OF	LED 2 HEAD EMERGENCY UNIT, ROUND HEAD, LOW PROFILE CONTEMPORARY DESIGN WITH THERMOPLASTIC HOUSING, IMPACT RESISTANT, DAMP LOCATION LISTED. (PROVIDE 90 MIN. BACK-UP BATTERY). LAMPS: LED (2), 3 WATTS BALLAST: UNV. VOLT	LITHONIA "ELM2L" SER., COMPASS "CUP2" SER., LIGHTALARMS "LCA" SER., SURELITES "SEL1" SER., EVENLITE "TCL" SER.
F4	58 IN. DIAMETER CHANDELIER, TWENTY EIGHT LIGHTS; COORDINATE FINISH WITH OWNER/ARCHITECT. LAMPS: LED (28), E12 BASE, 25 WATTS MAX, 3000 DEGREE K DRIVER: 120V	HUDSON VALLEY LIGHTING "ALLENDALE" SER.	OG	LED 2 HEAD EMERGENCY UNIT, HIGH OUTPUT, ROUND HEAD, LOW PROFILE CONTEMPORARY DESIGN WITH THERMOPLASTIC HOUSING, IMPACT RESISTANT, DAMP LOCATION LISTED. (PROVIDE 90 MIN. BACK-UP BATTERY). "C" WHERE SHOWN INDICATES CEILING MOUNTED. LAMPS: LED (2), 7 WATTS BALLAST: UNV. VOLT	LITHONIA "ELM4L" SER., OR EQUAL BY COMPASS, LIGHTALARMS, SURELITES, EVENLITE
F5	LED WALL SCONCE, BRASS CONSTRUCTION, FROSTED GLASS SHADE, BRONZE FINISH. LAMPS: LED, 700 LUMENS, 6 WATTS, 3000 DEGREE K DRIVER: 120V	VISUAL COMFORT SIGNATURE "FAY LED WALL SCONCE" SER.	OH	EXTERIOR ARCHITECTURAL STYLED LOW PROFILE LED EMERGENCY LIGHTING UNIT, SELF-DIAGNOSTICS STANDARD, WET LOCATION WITH FULLY GASKETED, PRISMATIC POLYCARB. REFRACTOR, BRONZE / BLACK FINISH SELECTED BY ARCHITECT. (PROVIDE 90 MIN. BACK-UP BATTERY). LAMPS: LED, 3 WATTS BALLAST: UNV. VOLT	LITHONIA "AFO" SER., MULE "MAKO" SER., SPITZER "EWS" SER., COMPASS "CJW" SER., ISOLITE "LED" SER.
F6	FOUR LIGHT PENDANT LANTERN, IRON CONSTRUCTION, GOLD SILVER LEAF FINISH. LAMPS: LED (4), E12 BASE, 60 WATTS MAX, 3000 DEGREE K DRIVER: 120V	TROY LIGHTING "MORGAN 4 LIGHT" SER.	ON	CONTRACTOR TO VERIFY ALL VOLTAGES, GRID AND CEILING TYPES WITH THE ARCHITECT AND COORDINATE FIXTURE DIMENSION SIZE TO ENSURE A PROPER FIT IN ALL CEILING TYPES PRIOR TO ORDERING. 2. ALL LUMENS LISTED ARE DELIVERED LUMENS. ALL EQUALS TO SPECIFIED FIXTURES SHALL NOT BE LOWER THAN 5% OF SPECIFIED LUMENS. WATTAGE SHALL NOT BE HIGHER THAN 15% OF SPECIFIED WATTAGE. 3. LISTING OF MANUFACTURERS DOES NOT EQUAL AUTOMATIC APPROVAL. ALL CHARACTERISTICS NOTED IN DESCRIPTION SECTION MUST BE MET IN ORDER TO BE APPROVED, WHERE VENDOR/REP. DOES NOT HAVE ONE, MANUFACTURER LISTED, PRIOR APPROVAL IS REQUIRED TO BE SUBMITTED TO ENGINEER TEN (10) DAYS PRIOR TO BID.	
F7	LED WALL SCONCE, STEEL CONSTRUCTION; COORDINATE FINISH WITH OWNER/ARCHITECT. LAMPS: LED (1), TYPE A/E26 BASE, 60 WATTS MAX, 3000 DEGREE K DRIVER: 120V	ARTERIONS "WATSON SCONCE" SER.	OO		
F8	8.5 INCH DIAMETER SURFACE MOUNT, CERAMIC CONSTRUCTION, DAMP RATED; COORDINATE FINISH WITH OWNER/ARCHITECT. LAMPS: LED, E26 BASE, 60 WATTS MAX, 3000 DEGREE K DRIVER: 120V	SCHOOLHOUSE "ALABAMA LARGE SURFACE MOUNT" SER.	OP		
F9	16 INCH DIAMETER PENDANT, ALUMINUM AND STEEL CONSTRUCTION, DAMP RATED; COORDINATE FINISH WITH OWNER/ARCHITECT. LAMPS: LED, E26 BASE, 60 WATTS MAX, 3000 DEGREE K DRIVER: 120V	SCHOOLHOUSE "FACTORY 7 ROD PENDANT" SER.	OS		
F10	22.5 INCH DIAMETER PENDANT, IRON CONSTRUCTION, DAMP RATED, ENGLISH BRONZE FINISH. LAMPS: LED (3), TYPE A/E26 BASE, 40 WATTS MAX, 3000 DEGREE K DRIVER: 120V	ARTERIONS "ANDERSON SMALL PENDANT" SER.	OT		
F11	16 INCH DIAMETER SURFACE MOUNT, STEEL CONSTRUCTION, DAMP RATED; COORDINATE FINISH WITH OWNER/ARCHITECT. LAMPS: LED, 910 LUMENS, 13 WATTS, 3000 DEGREE K DRIVER: 120V	SCHOOLHOUSE "FACTORY 5 SURFACE MOUNT" SER.	OU		
G	NOMINAL 6" ROUND SURFACE MOUNTED PANEL; SLEEK ULTRA LOW PROFILE; DIFFUSING LENS PROVIDING LIGHT UNIFORMITY. LAMPS: LED, 1000 LUMENS MINIMUM, 14 WATTS, 3000 DEGREE K DRIVER: UNV. VOLT	JUNO "JSP" SER., HALO "SMDE" SER., PRESCOLITE "LBSE" SER.	OV		
H	ROUND LED PENDANT, NOMINAL 30 IN. DIAMETER BOWL, ALUMINUM CONSTRUCTION, SATIN WHITE ACRYLIC LENS, CABLE SUSPENDED; STANDARD 0-10 DIMMING. COORDINATE FINISH WITH OWNER/ARCHITECT. PROVIDE STANDARD LENGTH STEM. LAMPS: LED, 16400 LUMENS, 130 WATTS, 3000 DEGREE K DRIVER: UNV. VOLT	G LIGHTING "CUMBERLAND" SER., OR EQUAL BY SPI LIGHTING, VISA LIGHTING	OW		
J	4 FT. WALL MOUNTED LED, STEEL CONSTRUCTION, SATIN ACRYLIC LENS, DIRECT/INDIRECT OPTICS; STANDARD 0-10 DIMMING. COORDINATE FINISH WITH OWNER/ARCHITECT. PROVIDE 7 WATT BATTERY PACK WHERE SHOWN ON PLANS. LAMPS: LED, 2400 LUMENS DIRECT, 2400 LUMENS INDIRECT, 40 WATTS, 3000 DEGREE K DRIVER: UNV. VOLT	DAY-O-LITE "MED-PL-D" SER., FAIL-SAFE "MWL" SER., LIFESHED "EVEXIA" SER.	OX		
K	COMMERCIAL GRADE DOWNLIGHT, RECESSED SELF FLANGED, 6 IN. ROUND APERTURE, SPECULAR REFLECTOR FINISH; ACCESS FROM BELOW OR ABOVE CEILING; 0-10 DIMMING TO 1%. LAMPS: LED, 2500 LUMENS, 29 WATTS, 3000 DEGREE K DRIVER: UNV. VOLT	LITHONIA "LDN6" SER., HALO COMMERCIAL "HC6" SER., PRESCOLITE "LFR-6RD" SER.	OY		
L1	6 IN. ROUND COMMERCIAL GRADE CYLINDER, PENDANT MOUNTED, WIDE DISTRIBUTION, 0-10 DIMMING TO 1%, PROVIDE MOUNTED BRACKET OR CANOPY AS REQUIRED. LAMPS: LED, 2500 LUMENS, 29 WATTS, 3000 DEGREE K DRIVER: UNV. VOLT	LITHONIA "LDN6CYL" SER., HALO COMMERCIAL "HC6" SER., RAYON "RFL-6" SER.	OZ		

ELECTRICAL LEGEND	
LIGHTING AND POWER	
	CONDUIT RUN CONCEALED ABOVE CEILING OR IN WALL, HASH MARKS INDICATE NUMBER OF CONDUCTORS, (3 WIRE UNLESS SHOWN).
	CONDUIT RUN CONCEALED BELOW FLOOR SLAB, OR UNDERGROUND.
	HOMERUN TO PANELBOARD, LETTER OR LETTERS INDICATE PANELBOARD, NUMBERS INDICATES CIRCUIT NUMBERS.
	LIGHT FIXTURE, SEE SCHEDULE FOR MOUNTING AND TYPE.
	UNSWITCHED NIGHT LIGHT FIXTURE, SEE SCHEDULE FOR MOUNTING AND TYPE, PROVIDE WITH 100 LUMEN, 90 MINUTE BATTERY PACK.
	LIGHTING FIXTURE, WALL BRACKET MOUNTED, (MOUNTING HEIGHT AS NOTED ON DRAWINGS OR AS SHOWN ON ARCHITECTURAL ELEVATIONS.)
	LIGHTING FIXTURE, WALL BRACKET MOUNTED, PROVIDE WITH 100 LUMEN, 90 MINUTE BATTERY PACK, (MOUNTING HEIGHT AS NOTED ON DRAWINGS OR AS SHOWN ON ARCHITECTURAL ELEVATIONS.)
	JUNCTION BOX LOCATED ABOVE CEILING.
	JUNCTION BOX, FLUSH WALL MOUNTED AT 18 IN. TO CENTERLINE UNLESS OTHERWISE NOTED.
	CEILING MOUNTED OUTLET WITH ONE TWIST LOCK SIMPLEX OUTLET (NEMA 15-20), SUPPORT BOX BY 3/8 IN. THREADED ROD TO STRUCTURE, PROVIDE KELLUM STRAIN RELIEF GRIP AT BOX AND AT SUSPENDED OUTLET.
	DUPLEX CONVENIENCE OUTLET, 18 IN. ABOVE FLOOR UNLESS OTHERWISE NOTED.
	DUPLEX CONVENIENCE OUTLET, 8 IN. ABOVE COUNTER TOP OR 42 IN. MOUNTING HEIGHT.
	QUADRUPLUX CONVENIENCE OUTLET, 18 IN. ABOVE FLOOR UNLESS OTHERWISE NOTED.
	QUADRUPLUX CONVENIENCE OUTLET, GF TYPE, 18 IN. ABOVE FLOOR UNLESS OTHERWISE NOTED.
	DUPLEX CONVENIENCE OUTLET, GF TYPE, 18 IN. MOUNTING HEIGHT, (WP) WHERE SHOWN INDICATES WEATHERPROOF, PROVIDE METAL IN-USE WEATHERPROOF COVERPLATE.
	DUPLEX CONVENIENCE OUTLET, GF TYPE, MOUNTED 8 INCHES ABOVE COUNTER OR AT 42 IN. ABOVE FLOOR.
	SPECIAL RECEPTACLE TO SUIT EQUIPMENT BEING FURNISHED.
	FLUSH FLOOR BOX WITH DUPLEX CONVENIENCE OUTLET, AND COMBINATION TELEPHONE AND DATA OUTLET, PROVIDE WALKER 880 DMMXV SERIES, TWO GANG CAST IRON OR PLASTIC FLOOR BOX WITH BRASS FLANGE AND COVERPLATE.
	SINGLE POLE TOGGLE SWITCH, 42 IN. ABOVE FLOOR.
	THREE OR FOUR WAY SWITCH AS INDICATED, 42 IN. MOUNTING HEIGHT.
	MOTOR RATED TOGGLE SWITCH.
	0-10 VOLT SLIDE TYPE DIMMER, 42 IN. ABOVE FLOOR, (MANUAL ON TO 50%, DIM 1 - 100%, AUTO OFF PER IECC 2015, MUST BE COMPATIBLE WITH VAC SENSOR AND POWER PACK.)
	THREE WAY, 0-10 VOLT SLIDE TYPE DIMMER, 42 IN. ABOVE FLOOR, (MANUAL ON TO 50%, DIM 1 - 100%, AUTO OFF PER IECC 2015, MUST BE COMPATIBLE WITH VAC SENSOR AND POWER PACK.)
	PANELBOARD, SEE SCHEDULE.
	DISCONNECT SWITCH.
	MOTOR.
	PHOTO ELECTRIC CELL.
	365 DAY DIGITAL PROGRAMMABLE TYPE ELECTRONIC CONTROL TIME CLOCK.
	KNOX REMOTE POWER BOX.
TELEPHONE/DATA/CATV SYSTEMS	
	COMBINATION COMPUTER AND TELEPHONE OUTLET, 18 IN. TO CENTER LINE OF OUTLET UNLESS NOTED OTHERWISE, (2 DATA, 1 TEL.)
	COMBINATION COMPUTER AND TELEPHONE OUTLET, FLUSH WALL MOUNTED AT 46 IN. TO CENTER LINE OF OUTLET, (2 DATA, 1 TEL.)
	COMPUTER OUTLET, FLUSH WALL MOUNTED AT 46 IN. TO CENTER LINE OF OUTLET, (2 DATA)
	WIRELESS ACCESS POINT, (2 DATA)
	TELEVISION OUTLET, 18 IN. TO CENTER LINE OF OUTLET UNLESS NOTED OTHERWISE.
	PLYWOOD BACKBOARD, 'TB' INDICATES TELEPHONE BOARD.
LIGHTING CONTROL SENSORS	
	COMBINATION 360 DEGREE, ULTRASONIC AND PASSIVE INFRARED SENSOR (WATT STOPPER "DT-300", GREENGATE, NOVITAS, HUBBELL, LEVITON, SENSOR SWITCH, "CV" INDICATES VACANCY SENSOR, UNIT MUST COMPLY WITH IECC 2015 REQUIREMENTS AND BE COMPATIBLE WITH DIMMER)
	WALL MOUNTED SENSOR SWITCH, 42 IN. MOUNTING HEIGHT (WATT STOPPER DSW-30, GREENGATE, NOVITAS, HUBBELL, LEVITON, SENSOR SWITCH)
	ULTRASONIC OCCUPANCY SENSOR (WATT STOPPER "WT-2250", GREENGATE, NOVITAS, HUBBELL, LEVITON, SENSOR SWITCH)
	EMERGENCY OVERRIDE RELAY FOR NORMALLY SWITCHED OPERATION.
FIRE ALARM SYSTEM (FULL VOICE EVAC SYSTEM)	
	FIRE ALARM CONTROL PANEL, SURFACE MOUNTED.
	FIRE ALARM ANNUNCIATOR, FLUSH MOUNTED.
	REMOTE VOICE EVACUATION MICROPHONE, WALL MOUNTED IN FLUSH BOX, 42 IN. A.F.F.
	SPEAKER AND FLASHING LIGHT, 80 IN. ABOVE FLOOR TO THE BOTTOM OF THE LENS.
	STROBE LIGHT, 80 IN. ABOVE FLOOR TO THE BOTTOM OF THE LENS.
	FIRE ALARM PULL STATION, WALL MOUNTED 42 IN. ABOVE FLOOR.
	FIRE ALARM DUCT SMOKE DETECTOR LOCATED IN HVAC SUPPLY AIR DUCT, PROVIDE IN UNITS 2000 CFM AND GREATER, DETECTOR SHALL SHUT DOWN UNIT UPON ACTIVATION.
	SMOKE DETECTOR, PHOTOELECTRIC TYPE.
	HEAT DETECTOR, 135 DEGREE OPERATION.
	CARBON MONOXIDE DETECTOR, CEILING MOUNTED.
	FUEL GAS DETECTOR, NFPA 715 (2023 EDITION) COMPLIANT, MUST BE SAME MANUFACTURER OR COMPATIBLE WITH MANUFACTURER OF FIRE ALARM SYSTEM.
	TAMPER SWITCH, FURNISHED AND INSTALLED WITH SPRINKLER SYSTEM, INTERLOCK WITH FIRE ALARM SYSTEM BY ELECTRICAL.
	FLOW SWITCH, FURNISHED AND INSTALLED WITH SPRINKLER SYSTEM, INTERLOCK WITH FIRE ALARM SYSTEM BY ELECTRICAL.
SOUND SYSTEM (RACEWAY, BOXES, AND PULL STRING ONLY)	
	SPEAKER, CEILING RECESSED, PROVIDE 3/4 IN. C, FROM SPEAKER TO SOUND CONSOLE, COORDINATE EXACT REQUIREMENTS WITH A/V CONSULTANT.
	SPEAKER, FLUSH WALL MOUNTED, PROVIDE 3/4 IN. C, FROM SPEAKER TO SOUND CONSOLE, COORDINATE EXACT REQUIREMENTS WITH A/V CONSULTANT, (WP) WHERE SHOWN INDICATES WEATHERPROOF.
	SOUND RACK/CONSOLE.
	VOLUME CONTROL, MOUNTED 42 IN. ABOVE FLOOR, PROVIDE 3/4 IN. C, TO SOUND RACK LOCATION.
	MICROPHONE OUTLET, PROVIDE 3/4 IN. C, TO SOUND RACK LOCATION.
SECURITY SYSTEM (RACEWAY, BOXES, AND PULL STRING ONLY)	
	ACCESS CONTROL PROXIMITY READER, PROVIDE JUNCTION BOX AND 3/4 IN. C, WITH PULL STRING TO SECURITY EQUIPMENT LOCATION, COORDINATE WITH SECURITY CONTRACTOR PRIOR TO ROUGH-IN, COORDINATE MOUNTING HEIGHT WITH OWNER PRIOR TO ROUGH-IN, (RACEWAY AND BOXES ONLY)
	DOOR CONTACT POSITION SENSOR LOCATION, PROVIDE SINGLE GANG BOX AT DOOR FRAME ON SECURE SIDE OF DOOR, COORDINATE EXACT LOCATION WITH ACCESS CONTROL SYSTEM VENDOR, PROVIDE 3/4 IN. C, WITH PULL STRING TO STUB-OUT ABOVE CEILING.
	WALL MOUNTED CCTV SECURITY CAMERA, PROVIDE JUNCTION BOX AND IN. C, WITH PULL STRING TO SECURITY EQUIPMENT LOCATION, COORDINATE MOUNTING HEIGHT WITH ARCHITECTURAL.
	INTRUSION DETECTION - MOTION SENSORS, DIRECTIONAL AS SHOWN, PROVIDE SENSORS OF TYPE AND DISTRIBUTION FOR FULL COVERAGE OF AREAS SHOWN.

NOTES:  
1. ALL MOUNTING HEIGHTS ARE FROM FINISHED FLOOR TO CENTERLINE OF OUTLET OR DEVICE.  
2. ALL RECEPTACLES SHALL BE TAMPER RESISTANT (TYPE "TR").

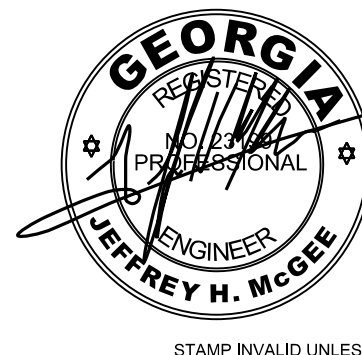
GM  
Architect

102 Sammy Court  
WARNER ROBINS, GEORGIA 31088  
glnarch@outlook.com  
(478)-365-8976

ARCHITECT

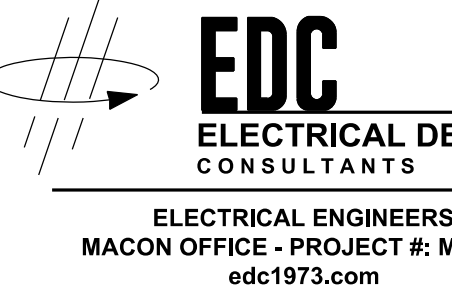
STAMP INVALID UNLESS SIGNED

CONSULTANT



STAMP INVALID UNLESS SIGNED

CONSULTANT



ELECTRICAL ENGINEERS  
MACON OFFICE - PROJECT #: M24085  
edc1973.com

10641 HIGHWAY 36  
COVINGTON, GA 30014

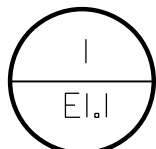


GENERAL DEMOLITION NOTES: (SHEETS E1.1 AND E1.2)

- A. REMOVE EXISTING LIGHTS (ONLY IN SPECIFIED AREAS) AND DISPOSE OF AS DIRECTED BY OWNER.
- B. PROVIDE BLANK COVERS ON ALL JUNCTION BOXES AND OUTLET BOXES NOT INTENDED FOR REUSE. PROVIDE BLANK COVERS OVER ANY AND ALL UNCOVERED EXISTING JUNCTION OR OUTLET BOXES.
- C. EXISTING CEILINGS, WALLS, AND FLOORS DISTURBED OR DISFIGURED BY THE ELECTRICAL RENOVATION SHALL BE PATCHED, MENDED OR REPLACED BY TRADES ACTIVELY PARTICIPATING IN THIS TYPE OF WORK. RESPONSIBILITY FOR REPAIRS SHALL BE COORDINATED BETWEEN GENERAL CONTRACTOR AND ELECTRICAL SUBCONTRACTOR.
- D. ALL EXISTING EQUIPMENT REMOVED FROM SERVICE AND NOT INTENDED FOR REUSE SHALL REMAIN THE PROPERTY OF OWNER AND SHALL BE DISPOSED OF AS DIRECTED BY THE OWNER.
- E. MAINTAIN SERVICE TO ALL EXISTING CIRCUITS THAT ARE NOT SCHEDULED FOR REMOVAL.
- F. ALL ACCESSIBLE ITEMS OF ELECTRICAL EQUIPMENT CONDUITS, WIRING, LIGHTS, RECEPTACLES, ETC. AFFECTED BY THE RENOVATION WORK AND NOT REQUIRED IN THE COMPLETED WORK SHALL BE CAREFULLY REMOVED. DAMAGED WALLS, FLOORS, CEILINGS, ETC. SHALL BE PATCHED AND FINISHED TO MATCH THE EXISTING ADJACENT SURFACES. REMOVED ITEMS SHALL BE PROPERLY DISPOSED OF OFF SITE AND NOT REUSED EXCEPT AS NOTED. TURN OVER ALL EXISTING EQUIPMENT DESIRED BY BUILDING OWNER.
- G. RECONNECT CIRCUITS AS REQUIRED TO MAINTAIN CONTINUITY TO EXISTING DEVICES AND EQUIPMENT TO REMAIN.
- H. WHERE ONLY A PORTION OF A CIRCUIT'S LOAD IS SCHEDULED TO BE REMOVED, REMOVE ONLY THAT PORTION ASSOCIATED WITH THE DEMOLISHED DEVICE TO A POINT WHERE THE REMAINING LOAD IS ACTIVE AND MAINTAIN IN A GOOD OPERATING CONDITION.
- J. EXISTING EQUIPMENT SHOWN ON ARCHITECTURAL, MECHANICAL, PLUMBING AND ELECTRICAL DRAWINGS THAT WILL REMAIN SHALL HAVE SERVICE MAINTAINED OR RECONNECTED TO EXISTING OR NEW PANELBOARD AS NECESSARY.
- K. TO MAINTAIN SERVICE OR TO EXTEND OR RECONNECT CIRCUITS WHERE CONDUIT CAN NOT BE CONCEALED, SURFACE METAL RACEWAY (WIEMOLD V700 SERIES PAINTED TO MATCH WALLS) MAY BE USED. VERIFY WITH ARCHITECT BEFORE INSTALLING.
- L. ELECTRICAL CONTRACTOR SHALL REVIEW ARCHITECTURAL DRAWINGS AND SITE CONDITIONS FOR DOOR SWINGS, CABINETS, COUNTERS AND OTHER BUILT-IN EQUIPMENT. CONDITIONS INDICATED ON ARCHITECTURAL DRAWING SHALL GOVERN.
- M. COORDINATE ELECTRICAL WITH ARCHITECTURAL DETAILS, FLOOR PLANS, ELEVATIONS, STRUCTURAL, MECHANICAL AND PLUMBING DRAWINGS. PROVIDE FITTINGS, JUNCTION BOXES AND ACCESSORIES TO MEET CONDITIONS. COORDINATE ROUTING OF ALL NEW FEEDERS WITH EXISTING SITE ELEMENTS. ALL FEEDERS SHALL BE CONCEALED EXCEPT IN MECHANICAL/ELECTRICAL SPACES WITH SURFACE MOUNTED PANELS.
- N. ENSURE ALL EXISTING TELEPHONE, DATA, TELEVISION, SECURITY, AND OTHER LOW VOLTAGE CABLING IS SECURED TO STRUCTURE AND PROTECTED FROM DAMAGE. DURING DEMOLITION AND NEW CONSTRUCTION, CONTRACTOR IS RESPONSIBLE FOR KEEPING ALL SYSTEMS IN WORKING ORDER.



DEMOLITION LEGEND	
ED	EXISTING DEVICE TO BE DEMOLISHED, SEE DEMOLITION NOTES.
ER	EXISTING DEVICE TO BE RELOCATED, PROVIDE NEW DEVICE AND FACEPLATE. PROVIDE NEW BRANCH CIRCUIT BACK TO SERVING PANEL, BACKBOARD OR CABINET.
EX	EXISTING DEVICE TO REMAIN, PROVIDE NEW DEVICE AND FACEPLATE. PROVIDE NEW CABLING BACK TO SERVING CABINET ON LOW VOLTAGE DEVICES.



FIRST FLOOR PLAN - ELECTRICAL DEMOLITION

SCALE: 1/8"=1'-0"

COORDINATION NOTE:

CONTRACTOR SHALL CAREFULLY REVIEW HVAC AND ELECTRICAL DRAWINGS PRIOR TO BID. ALL HVAC EQUIPMENT TO REMAIN, EQUIPMENT BEING REPLACED, AND NEW EQUIPMENT SHALL BE PROVIDED POWER. ELECTRICAL DRAWINGS SHOW THE MEANS OF PROVIDING POWER, HOWEVER, ALL EQUIPMENT MUST BE POWERED WHETHER SHOWN OR NOT.

WHERE ELECTRICAL DRAWINGS SHOW PROVIDING BREAKERS IN EXISTING PANELS TO SERVE EQUIPMENT, CONTRACTOR SHALL VERIFY AVAILABLE SPACE. IF NOT AVAILABLE, CONTRACTOR SHALL PROVIDE BREAKER IN CLOSEST PANEL WITH AVAILABLE CAPACITY AND SPACE.

ALL EQUIPMENT MUST BE PROVIDED WITH A DISCONNECTING MEANS PER THE 2020 NEC (WHETHER OR NOT SHOWN ON ELECTRICAL DRAWINGS OR DIVISION 23)

KEYED NOTES: (THIS SHEET ONLY)

- ALL EXISTING ELECTRICAL DEVICES IN AREA TO BE DEMOLISHED UNLESS NOTED OTHERWISE. RACEWAYS AND BOXES MAY BE REUSED WHERE POSSIBLE.
- EXISTING UTILITY CO EQUIPMENT TO BE UPSIZED AND RELOCATED FOR NEW SERVICE. SEE EXISTING POWER RISER DIAGRAM AND NEW POWER RISER DIAGRAM ON SHEET E5.1 FOR NEW SERVICE. SEE SHEET E3.2 FOR NEW LOCATION AND LOCATION REQUIREMENTS.
- EXISTING ELECTRICAL GEAR TO BE RELOCATED. SEE DETAILS 1/2.2 AND 1/2.3 FOR NEW LOCATION. EXTEND ALL EXISTING CIRCUITS TO REMAIN TO NEW LOCATION.
- EXISTING HVAC UNITS TO REMAIN. COORDINATE WITH MECHANICAL.

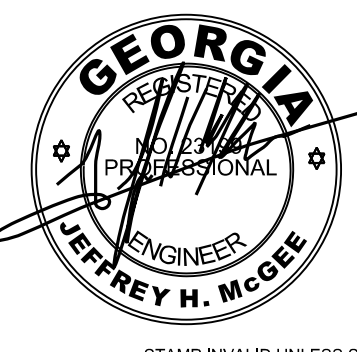
GM  
Architect

102 Sammy Court  
WARNER ROBINS, GEORGIA 31088  
gfmarch@outlook.com  
(478)-365-8976

ARCHITECT

STAMP INVALID UNLESS SIGNED

CONSULTANT



STAMP INVALID UNLESS SIGNED



ELECTRICAL ENGINEERS  
MACON OFFICE - PROJECT #: M24085  
edc1973.com

10641 HIGHWAY 36  
COVINGTON, GA 30014  
770.786.3031

FIRST FLOOR PLAN - ELECTRICAL DEMOLITION

Retrofit & Renovations for  
Madison Methodist Church

Madison, Georgia 30650  
1091 Confederate Highway

JOB NO.: 02405  
DRAWN BY: TW  
CHECKED BY: JM  
DESCRIPTION: ISSUE  
DATE: 07.24.2025

DATE: DESCRIPTION:

DATE: DESCRIPTION:

DATE: DESCRIPTION:

DATE: DESCRIPTION:

DATE: DESCRIPTION:

DATE: DESCRIPTION:

DATE: DESCRIPTION:

DATE: DESCRIPTION:

DATE: DESCRIPTION:

DATE: DESCRIPTION:

DATE: DESCRIPTION:

DATE: DESCRIPTION:

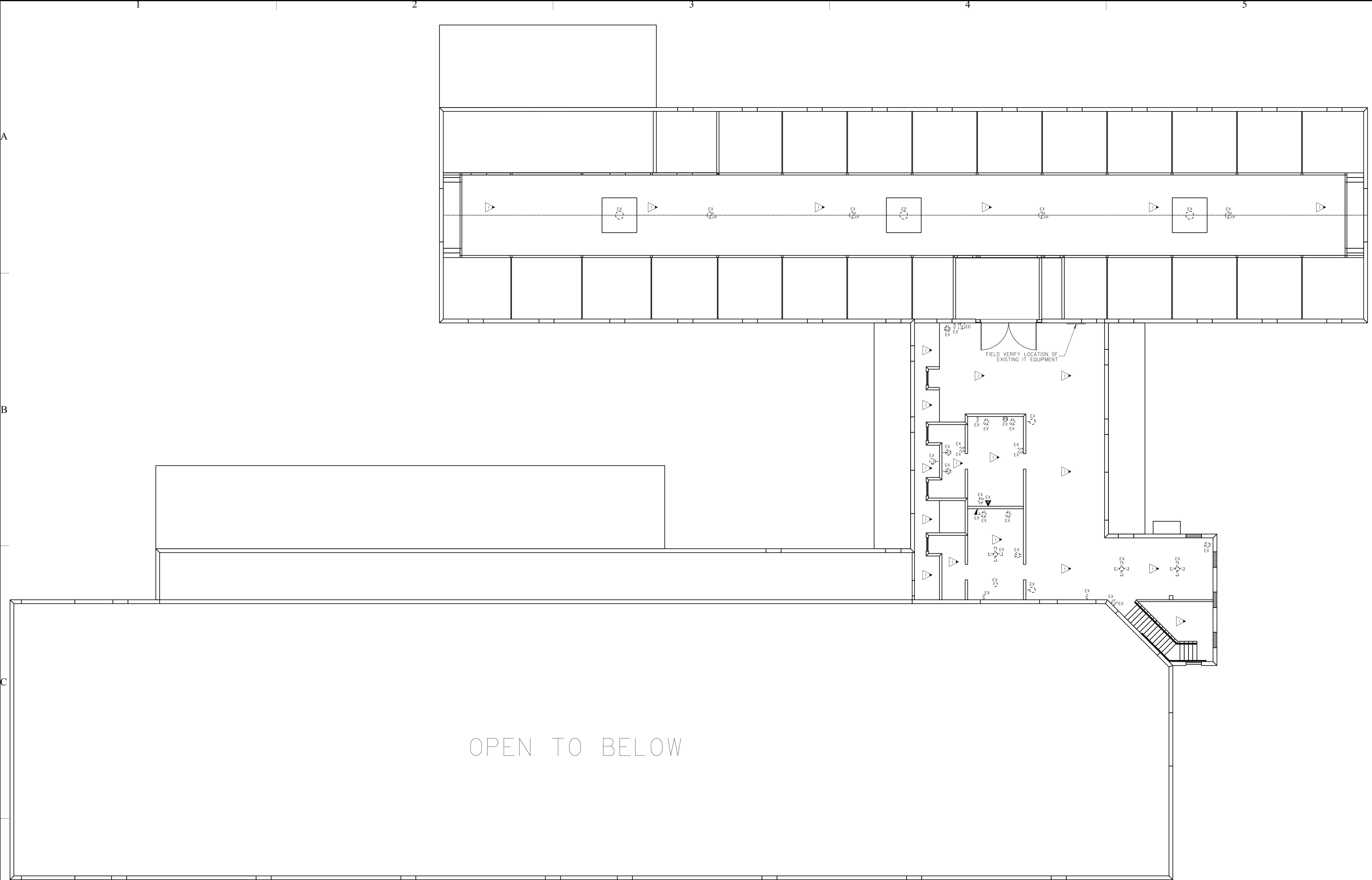
DATE: DESCRIPTION:

DATE: DESCRIPTION:

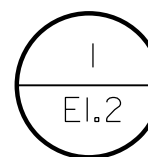
DATE: DESCRIPTION:

DATE: DESCRIPTION:

DATE: DESCRIPTION:

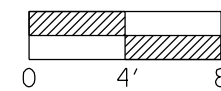


DEMOLITION LEGEND	
ED	EXISTING DEVICE TO BE DEMOLISHED, SEE DEMOLITION NOTES.
ER	EXISTING DEVICE TO BE RELOCATED, PROVIDE NEW DEVICE AND FACEPLATE, PROVIDE NEW BRANCH CIRCUIT BACK TO SERVING PANEL, BACKBOARD OR CABINET.
EX	EXISTING DEVICE TO REMAIN, PROVIDE NEW DEVICE AND FACEPLATE, PROVIDE NEW CABLING BACK TO SERVING CABINET ON LOW VOLTAGE DEVICES.



## SECOND FLOOR PLAN - ELECTRICAL DEMOLITION

SCALE: 1/8"=1'-0"



### KEYED NOTES: (THIS SHEET ONLY)

NO DEMOLITION WORK IN AREA UNLESS NOTED OTHERWISE.

### GENERAL DEMOLITION NOTES: (THIS SHEET ONLY)

SEE SHEET E1J FOR GENERAL DEMOLITION NOTES.

#### COORDINATION NOTE:

CONTRACTOR SHALL CAREFULLY REVIEW HVAC AND ELECTRICAL DRAWINGS PRIOR TO BID. ALL HVAC EQUIPMENT TO REMAIN, EQUIPMENT BEING REPLACED, AND NEW EQUIPMENT SHALL BE PROVIDED POWER. ELECTRICAL DRAWINGS SHOW THE MEANS OF PROVIDING POWER. HOWEVER, ALL EQUIPMENT MUST BE POWERED WHETHER SHOWN OR NOT.

WHERE ELECTRICAL DRAWINGS SHOW PROVIDING BREAKERS IN EXISTING PANELS TO SERVE EQUIPMENT, CONTRACTOR SHALL VERIFY AVAILABLE SPACE, IF NOT AVAILABLE, CONTRACTOR SHALL PROVIDE BREAKER IN CLOSEST PANEL WITH AVAILABLE CAPACITY AND SPACE.

ALL EQUIPMENT MUST BE PROVIDED WITH A DISCONNECTING MEANS PER THE 2020 NEC (WHETHER OR NOT SHOWN ON ELECTRICAL DRAWINGS OR DIVISION 23)

# GM

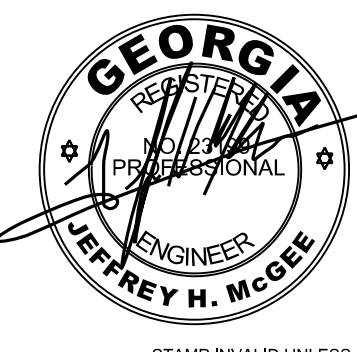
## Architect

102 Sammy Court  
WARNER ROBINS, GEORGIA 31088  
gfmarch@outlook.com  
(478) 365-8976

ARCHITECT

STAMP INVALID UNLESS SIGNED

CONSULTANT



STAMP INVALID UNLESS SIGNED



ELECTRICAL ENGINEERS  
MACON OFFICE - PROJECT #: M24085  
edc1973.com

10641 HIGHWAY 36  
COVINGTON, GA 30014  
770.786.3031

SECOND FLOOR PLAN - ELECTRICAL DEMOLITION

## Retrofit & Renovations for Madison Methodist Church

Madison, Georgia 30650  
1091 Confederate Highway

JOB NO.: 02405

DRAWN BY: TW

CHECKED BY: JM

DESCRIPTION: ISSUE

DATE: 07.24.2025

DESCRIPTION:

DATE:

DESCRIPTION:

DATE:

DESCRIPTION:

DATE:

REVISIONS:

1	8	
2	9	
3	10	
4	11	
5	12	
6	13	
7	14	

THESE DRAWINGS ARE THE PROPERTY OF Gfmarchitect AND ARE NOT TO BE REPRODUCED OR REUSED WITHOUT PERMISSION AND CREDIT.

COPYRIGHT: (C) 2024

SHEET

# E1.2

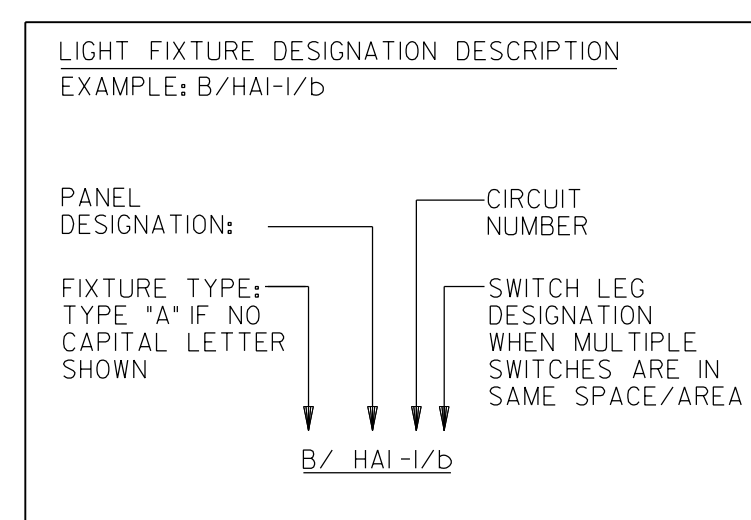
OF

## KEYED NOTES: (THIS SHEET ONLY)

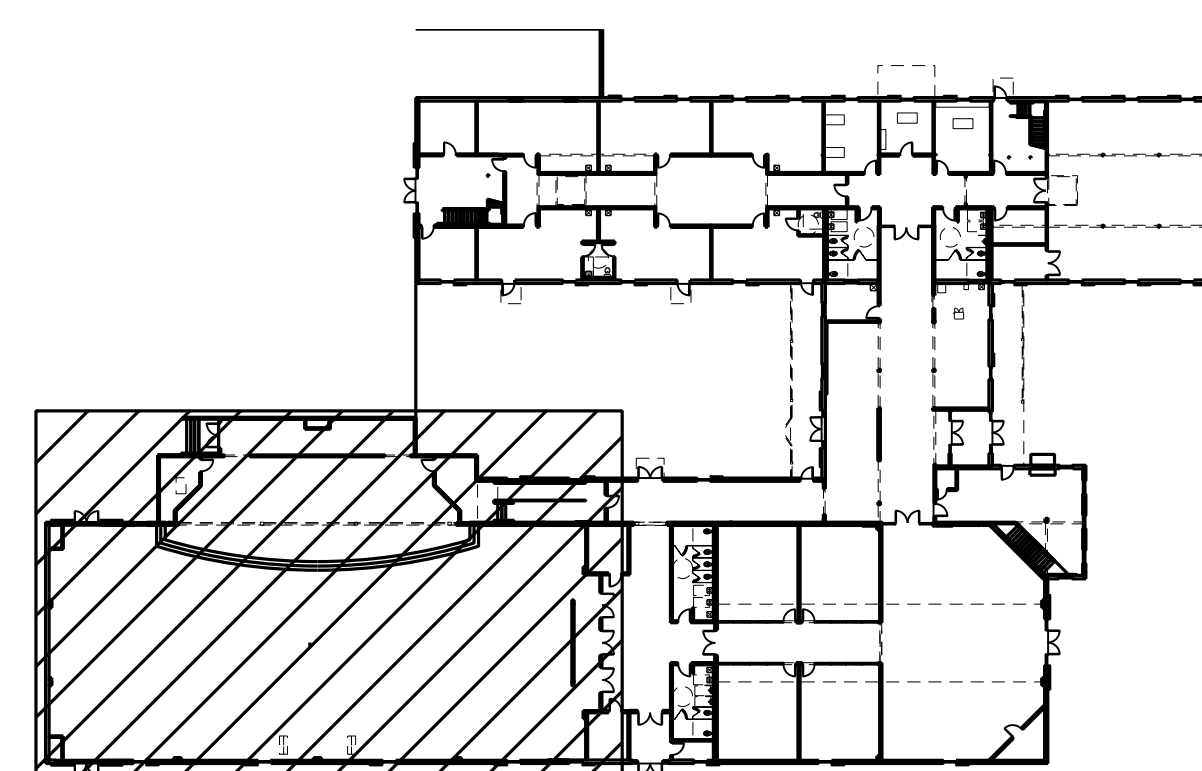
- PROVIDE 365 DAY DIGITAL PROGRAMMABLE TYPE ELECTRONIC CONTROL TIMECLOCK WITH MINIMUM 10 CONTACTS AND MINIMUM 96 ON/OFF EVENTS PER WEEK. CONTACTS RATED FOR MINIMUM 30 AMPS AND 208 VOLTS. PROVIDE WITH NEMA TYPE 1 ENCLOSURE AND CAPACITOR BACKUP. PROVIDE WITH AUTO-ON-OFF FUNCTION. PROVIDE AUXILIARY INPUT FROM PHOTO CELL FOR OVERRIDE ON OR OFF CONTROL.
- ROUTE VIA 10 POLE EXTERIOR LIGHTING CONTACTOR/TIMECLOCK LOCATED ADJACENT PANELS. PHOTO CELL SHALL CONTROL DUSK TILL DAWN OPERATION. TIMECLOCK SHALL INTERRUPT CIRCUIT DURING MIDNIGHT HOURS. SEE KEYED NOTE 1 USE PHOTO'S ENTIRE CIRCUIT IN 3/4 IN. C. UNLESS NOTED OTHERWISE, PROVIDE MANUAL OVERRIDE SWITCH, COORDINATE FINAL LOCATION WITH OWNER.
- TYPICAL TYPES 'L1 & K' EMERGENCY LIGHTING FIXTURE CIRCUITS IN SANCTUARY ARE ROUTED THROUGH EMERGENCY SWITCHING RELAY FOR EMERGENCY LIGHTING.
- COORDINATE EXACT MOUNTING HEIGHT WITH OWNER/ARCHITECT PRIOR TO ROUGH-IN.
- COORDINATE FINAL LOCATION OF SWITCH STATION WITH OWNER/ARCHITECT, AND A/V CONSULTANT PRIOR TO ROUGH IN.
- SEE DETAIL 2/E2J FOR WIRING REQUIREMENTS OF EMERGENCY LIGHTING AND CENTRAL BATTERY INVERTER.
- PROVIDE 12 POLE LIGHTING CONTROL RELAY PANEL SYSTEM FOR SANCTUARY COMPLETE WITH BREAKERS AND SWITCHING RELAYS FOR EACH POLE. SYSTEM MUST BE PROVIDED COMPLETE WITH A LOW VOLTAGE WALL STATION LOW VOLTAGE CONTROLS, AND SOFTWARE REQUIRED FOR SYSTEM FUNCTIONALITY. BASIS OF DESIGN IS THE WAVELINK WIRED UNIVERSAL SOURCE CONTROLLER. ACCEPTABLE MANUFACTURERS ARE COOPER LIGHTING / WAVELINK OR APPROVED EQUAL BY LITHONIA / NLIGHT, OR CURRENT / NX LIGHTING.

## GENERAL NOTES: (SHEETS E2.1, E2.2, &amp; E2.3)

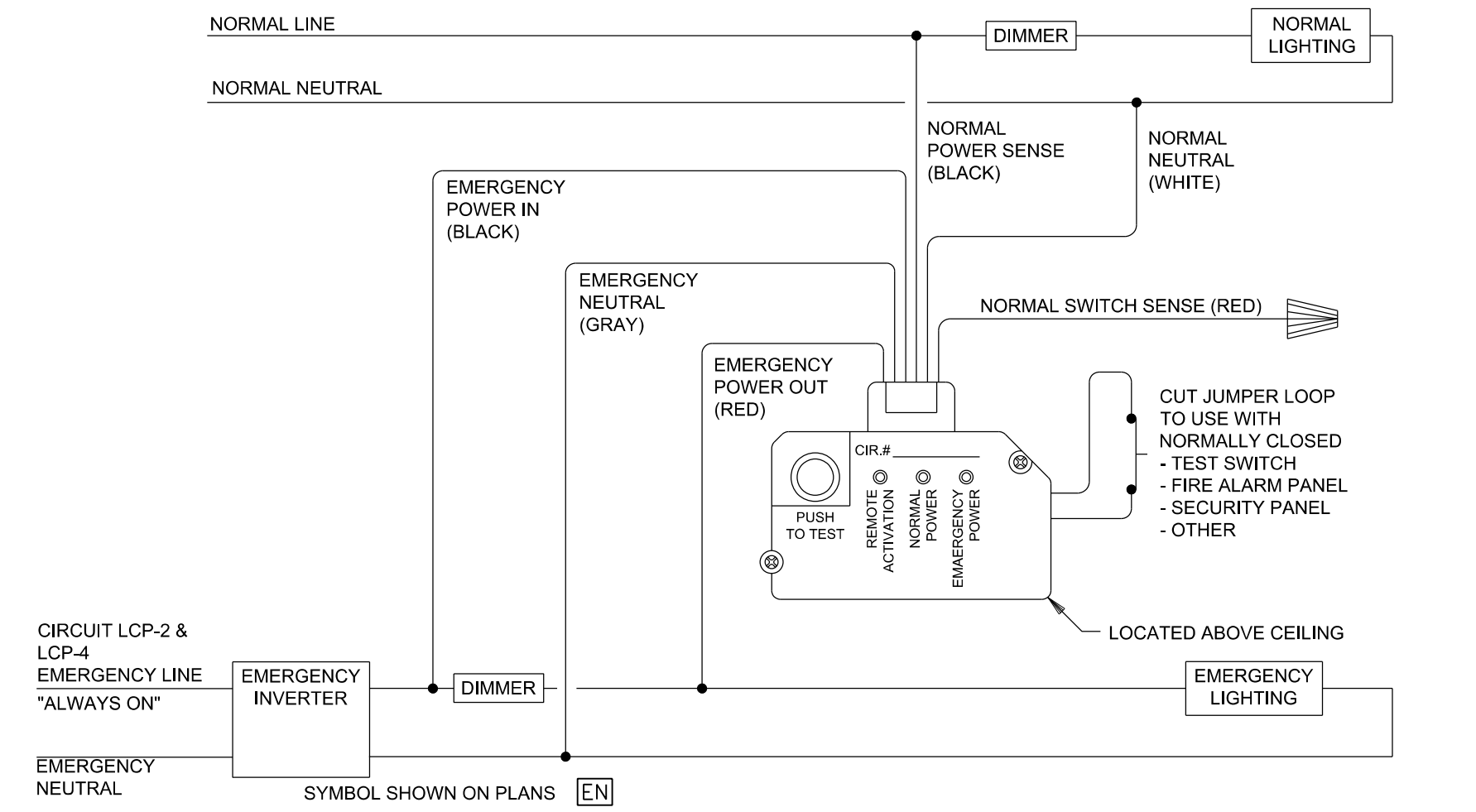
- THIS PLAN INDICATES AREAS TO BE CONTROLLED BY MOTION SENSORS. SINCE COVERAGES AND DEVICES VARY BETWEEN MANUFACTURERS IT SHALL BE THE CONTRACTORS RESPONSIBILITY TO COORDINATE PROPER DEVICE LOCATION, ORIENTATION AND QUANTITIES WITH THE MANUFACTURER OF THE SYSTEM BEING INSTALLED TO MEET THE SPECIFIED CRITERIA.
- ALL AREAS OF THIS PLAN REQUIRE OCCUPANCY SENSOR COVERAGE (EXCEPT FOR MECHANICAL ROOMS, ELECTRICAL ROOMS, SANCTUARY, AND FELLOWSHIP HALL). SEE LIGHTING SENSOR LEGEND EQU (TYPICAL).
- THERE ARE NO SWITCHPACKS SHOWN ON THIS PLAN. PROVIDE SWITCHPACKS AS REQUIRED WITH SENSORS. SWITCHPACKS ARE TO BE RATED AT 20A. PROVIDE ONE SWITCHPACK PER 20A LIGHTING CIRCUIT OR PER INDIVIDUAL AREA BEING CONTROLLED.
- CEILING SENSORS ARE TO BE MOUNTED AWAY FROM ANY STRONG AIRFLOW. COORDINATE LOCATION OF SENSOR WITH MECHANICAL AND LIGHTING PLANS.
- ALL SENSORS SHALL BE CEILING MOUNTED EXCEPT WHERE CEILING HEIGHTS EXCEED 15 FT.-0 IN. PROVIDE SENSOR WITH ADAPTOR PLATE FOR JUNCTION BOX MOUNTING. JUNCTION BOX SHALL BE CONCEALED ABOVE ACCESSIBLE CEILING. JUNCTION BOX SHALL BE SUPPORTED FROM STRUCTURE UTILIZING A 7/8" THREADED ROD. WHERE CEILING HEIGHTS EXCEED 15 FT.-0 IN. WALL MOUNT SENSORS AT 12 FT.-0 IN.
- PROVIDE UNSWITCHED HOT CONDUCTOR TO ALL EMERGENCY AND EXIT LIGHTS FOR NORMAL SWITCHED OPERATION OF FIXTURES WITH INTERNAL BATTERY BACKUP.



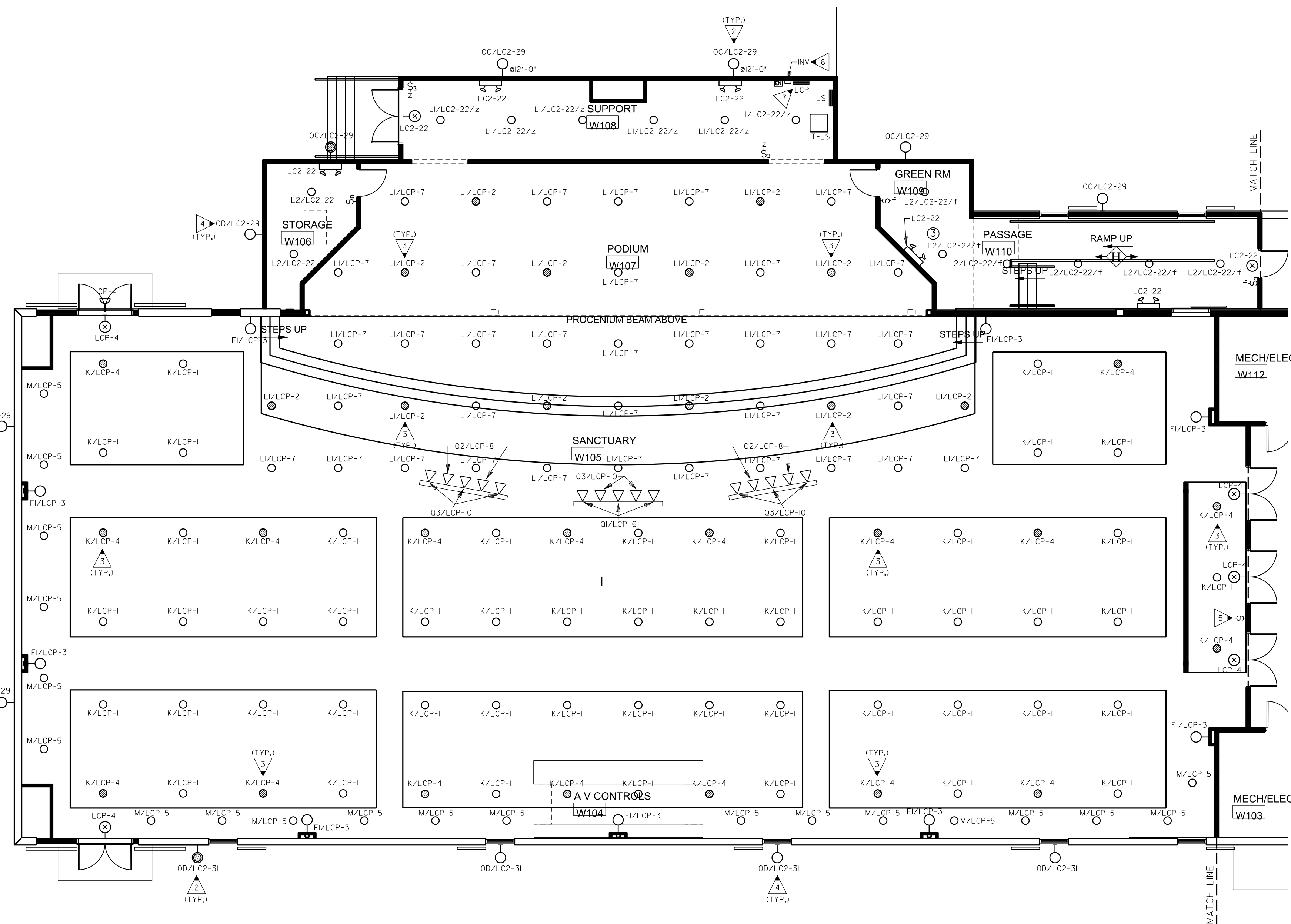
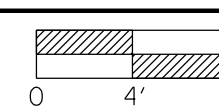
PROVIDE ALL BRANCH CIRCUIT CONDUIT/CONDUCTORS AS NECESSARY TO CONNECT ALL DEVICES SHOWN ON THE CIRCUIT. PROVIDE DEDICATED NEUTRALS FOR ALL CIRCUITS. (STRIPED NEUTRAL WITH PHASE COLOR STRIPING)



KEY PLAN (N.T.S.)

2  
E2.1  
EMERGENCY LIGHTING CONTROL UNIT DETAIL -  
(EMERGENCY LIGHTS SWITCHED W/NORMAL LIGHTS)

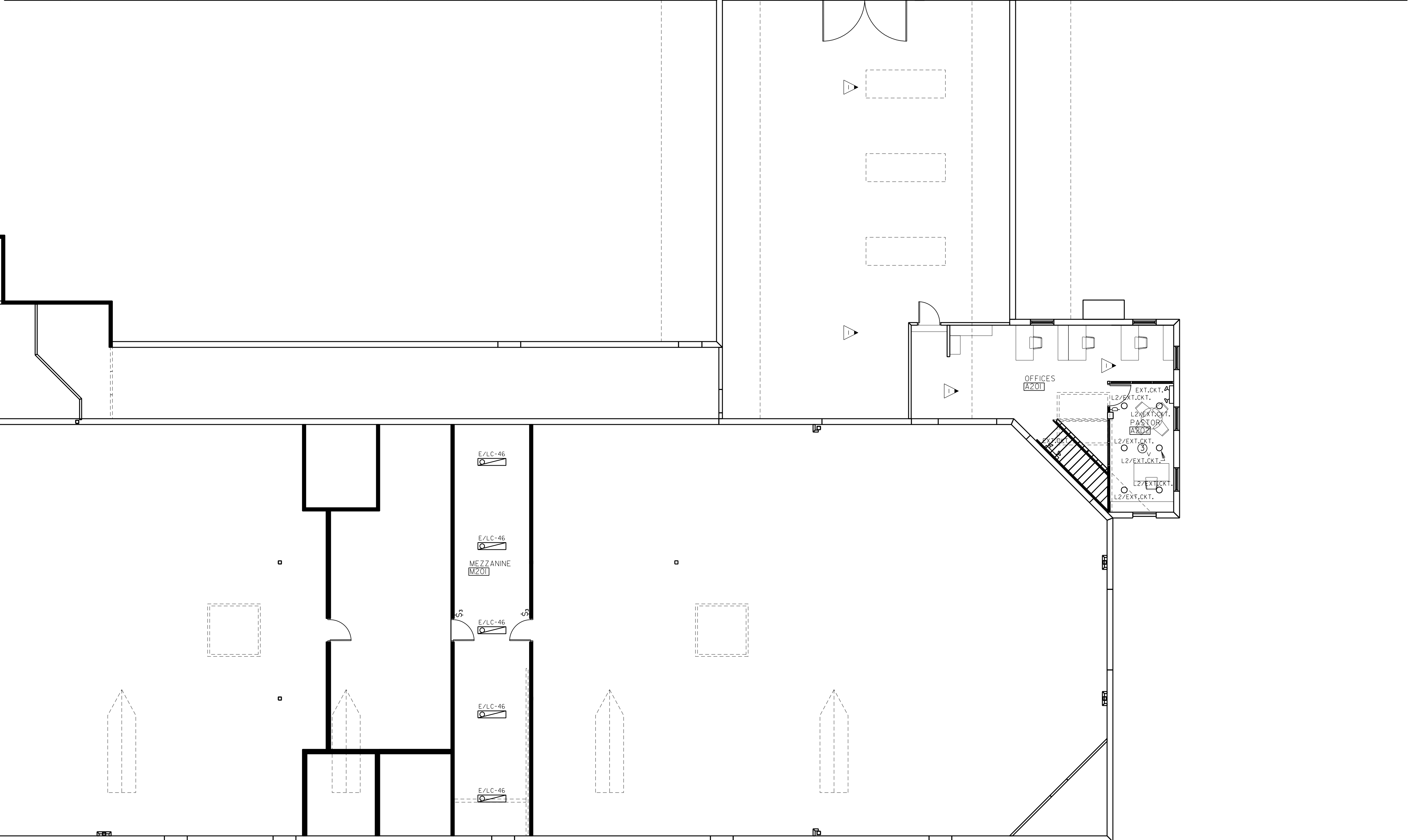
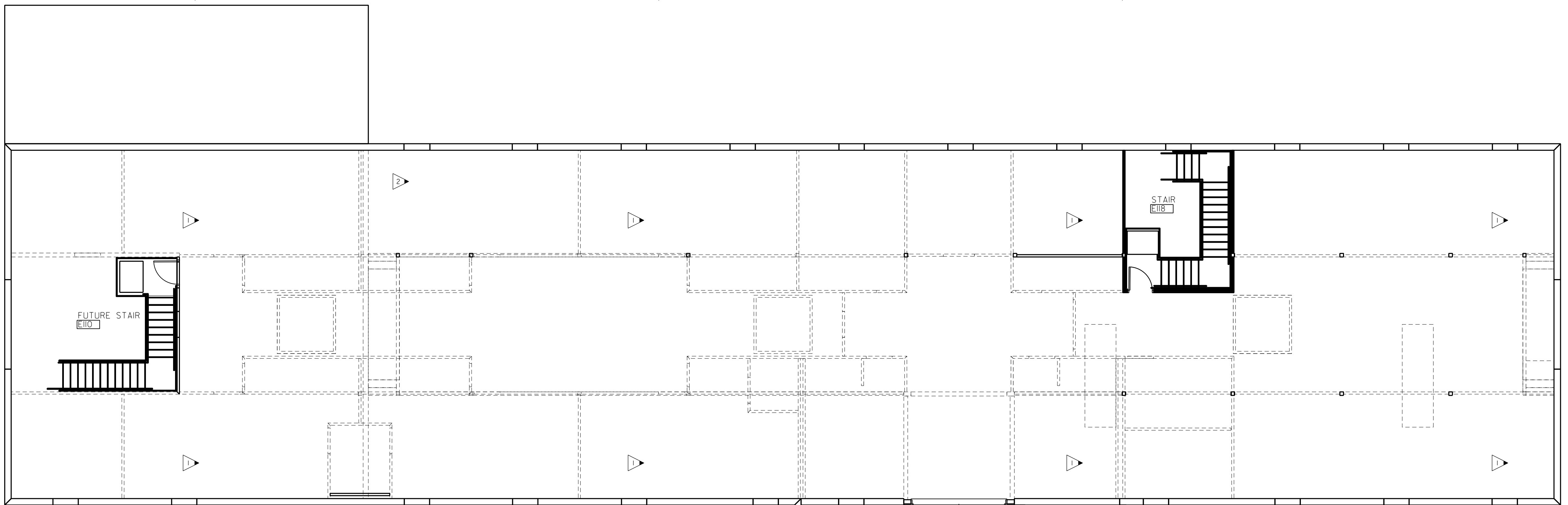
NOT TO SCALE

NOTE: NORMAL POWER SENSING FEED IS NOT SHOWN ON THE DRAWINGS  
BUT SHALL BE PROVIDED FROM NEAREST NORMAL POWER CIRCUIT.1  
E2.1  
PARTIAL FIRST FLOOR PLAN - LIGHTING  
SCALE: 1/8"=1'-0"



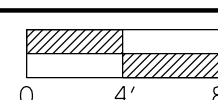
GENERAL NOTES: (THIS SHEET ONLY)

A. SEE SHEET E2.1 FOR GENERAL NOTES.



SECOND FLOOR PLAN - LIGHTING

SCALE: 1/8"=1'-0"



LIGHT FIXTURE DESIGNATION DESCRIPTION  
EXAMPLE: B/HAI-1/D

PANEL DESIGNATION:  
CIRCUIT NUMBER:  
FIXTURE TYPE:  
TYPE "A" IF NO CAPITAL LETTER SHOWN  
SWITCH LEG DESIGNATION WHEN MULTIPLE SWITCHES ARE IN SAME SPACE/AREA

B/HAI-1/D

KEYED NOTES: (THIS SHEET ONLY)

NO NEW WORK IN AREA DURING PHASE I UNLESS NOTED OTHERWISE.

PROVIDE ALL BRANCH CIRCUIT CONDUIT/CONDUCTORS AS NECESSARY TO CONNECT ALL DEVICES SHOWN ON THE CIRCUIT. PROVIDE DEDICATED NEUTRALS FOR ALL CIRCUITS. (STRIPED NEUTRAL WITH PHASE COLOR STRIPING)



MECHANICAL EQUIPMENT POWER SCHEDULE						
UNIT NAME	VOLTAGE/ PHASE	CIRCUIT BREAKER	PANEL NAME/ CIRCUIT NUMBER	FEEDER	DISCONNECT SWITCH	NOTES
HP-1	208V/1PH	50A/2P	LD-1	3#6, #10G, 1/1 N. C.	60A/3P/3R	1
HP-2	208V/1PH	50A/2P	LD-5	3#6, #10G, 1/1 N. C.	60A/3P/3R	1
HP-3	208V/1PH	50A/2P	LD-9	3#6, #10G, 1/1 N. C.	60A/3P/3R	1
HP-4	208V/1PH	50A/2P	LD-13	3#6, #10G, 1/1 N. C.	60A/3P/3R	1
HP-5	208V/1PH	50A/2P	LD-17	3#6, #10G, 1/1 N. C.	60A/3P/3R	1
HP-6	208V/1PH	50A/2P	LB-2	3#6, #10G, 1/1 N. C.	60A/3P/3R	1
HP-7	208V/1PH	50A/2P	LB-6	3#6, #10G, 1/1 N. C.	60A/3P/3R	1
HP-8	208V/1PH	60A/2P	LB-22	3#6, #8G, 1/1 N. C.	60A/3P/3R	1
HP-9	208V/1PH	60A/2P	LB-26	3#6, #8G, 1/1 N. C.	60A/3P/3R	1
HP-10	208V/1PH	40A/2P	LB-30	3#6, #10G, 1/1 N. C.	60A/3P/3R	1
AH-1	208V/1PH	60A/2P	LD-21	3#6, #8G, 1/1 N. C.	60A/2P	1,2
AH-2	208V/1PH	60A/2P	LD-25	3#6, #8G, 1/1 N. C.	60A/2P	1,2
AH-3	208V/1PH	60A/2P	LD-29	3#6, #8G, 1/1 N. C.	60A/2P	1,2
AH-4	208V/1PH	60A/2P	LD-33	3#6, #8G, 1/1 N. C.	60A/2P	1,2
AH-5	208V/1PH	60A/2P	LD-37	3#6, #8G, 1/1 N. C.	60A/2P	1,2
AH-6	208V/1PH	60A/2P	LB-10	3#6, #8G, 1/1 N. C.	60A/2P	1,2
AH-7	208V/1PH	60A/2P	LB-14	3#6, #8G, 1/1 N. C.	60A/2P	1,2
AH-8	208V/1PH	80A/2P	LB-34	3#4, #8G, 1/1, 1/4 IN. C.	100A/2P	1,2
AH-9	208V/1PH	80A/2P	LB-38	3#4, #8G, 1/1, 1/4 IN. C.	100A/2P	1,2
AH-10	208V/1PH	45A/2P	LB-42	3#6, #10G, 1/1 N. C.	60A/2P	1,2
HPU/ACU-1	208V/1PH	25A/2P	LB-18	3#10, #10G, 3/4 IN. C.	30A/3P/3R	1,3
HPU/ACU-14	208V/1PH	25A/2P	LB-48	3#10, #10G, 3/4 IN. C.	30A/3P/3R	1,3
PU-1	208V/3PH	80A/3P	LD-2	4#4, #8G, 1/1, 1/4 IN. C.	100A/3P/3R	1,7
PU-2	208V/3PH	80A/3P	LD-8	4#4, #8G, 1/1, 1/4 IN. C.	100A/3P/3R	1,7
PU-3	208V/3PH	45A/3P	LD-14	4#6, #10G, 1/1 N. C.	60A/3P/3R	1,7
EF-1	120V	20A/1P	LC-37	2#12, #12G, 1/2 IN. C.	MOTOR RATED SWITCH	1,5
EF-2	120V	20A/1P	LC-39	2#12, #12G, 1/2 IN. C.	MOTOR RATED SWITCH	1,5
EF-3	120V	20A/1P	LB-37	2#12, #12G, 1/2 IN. C.	MOTOR RATED SWITCH	1,6
EF-4	120V	20A/1P	LB-39	2#12, #12G, 1/2 IN. C.	MOTOR RATED SWITCH	1,6
EF-5	120V	CONNECT TO LIGHTS	CONNECT TO LIGHTS	2#12, #12G, 1/2 IN. C.	MOTOR RATED SWITCH	1,4
EF-6	120V	CONNECT TO LIGHTS	CONNECT TO LIGHTS	2#12, #12G, 1/2 IN. C.	MOTOR RATED SWITCH	1,4
FWH-1	120V	20A/1P	LC-49	2#12, #12G, 3/8 IN. C.	MOTOR RATED SWITCH	
WH-1	120V	20A/1P	LC-19	2#12, #12G, 1/2 IN. C.	MOTOR RATED SWITCH	
WH-2	120V	20A/1P	LB-27	2#12, #12G, 1/2 IN. C.	MOTOR RATED SWITCH	
RC-1	120V	20A/1P	LC-21	2#12, #12G, 1/2 IN. C.	MOTOR RATED SWITCH	
RC-2	120V	20A/1P	LB-29	2#12, #12G, 1/2 IN. C.	MOTOR RATED SWITCH	
GP-1	208V/3PH	30A/3P	LC-49	3#10, #10G, 3/8 IN. C.	30A/3P/3R	

NOTES:

- SEE MECHANICAL FOR EXACT CONNECTION REQUIREMENTS.
- PROVIDE DUCT SMOKE DETECTOR IN SUPPLY AIR DUCT. UNIT SHALL COMPLETE WITH SAMPLING TUBE AND REMOTE TEST/RESET SWITCH LOCATED IN MECH/ELEC ROOM IN ACCESSIBLE LOCATION. DETECTOR SHALL SHUT DOWN UNIT UPON ACTIVATION. DETECTOR SHALL BE PROVIDED BY ELECTRICAL AND INSTALLED BY MECHANICAL.
- INDOOR UNIT POWERED VIA OUTDOOR UNIT. PROVIDE 3/4 INCH CONDUIT FOR MANUFACTURER UNLESS.
- INTERLOCK AND POWER FAN VIA LIGHTING CIRCUIT IN AREA SERVED. PROVIDE 10 MINUTE TIME DELAY RELAY. PROVIDE UNSWITCHED HOT WIRE TO FAN AND RELAY AS FAN.
- FAN SHALL BE CONTROLLED BY A TIME CLOCK LOCATED IN W116 RISER ROOM. PROVIDE TIME CLOCK FOR FANS AND WIRE TIME CLOCK PER MANUFACTURERS INSTRUCTIONS.
- FAN SHALL BE CONTROLLED BY A TIME CLOCK LOCATED IN A107 SUPPORT ROOM. PROVIDE TIME CLOCK FOR FANS AND WIRE TIME CLOCK PER MANUFACTURERS INSTRUCTIONS.
- UNIT COMES WITH A MANUFACTURERS SUPPLY AIR DUCT SMOKE DETECTOR. UNIT SHALL COMPLETE WITH SAMPLING TUBE AND REMOTE TEST/RESET SWITCH LOCATED IN MECH/ELEC ROOM IN ACCESSIBLE LOCATION. DETECTOR SHALL SHUT DOWN UNIT UPON ACTIVATION.



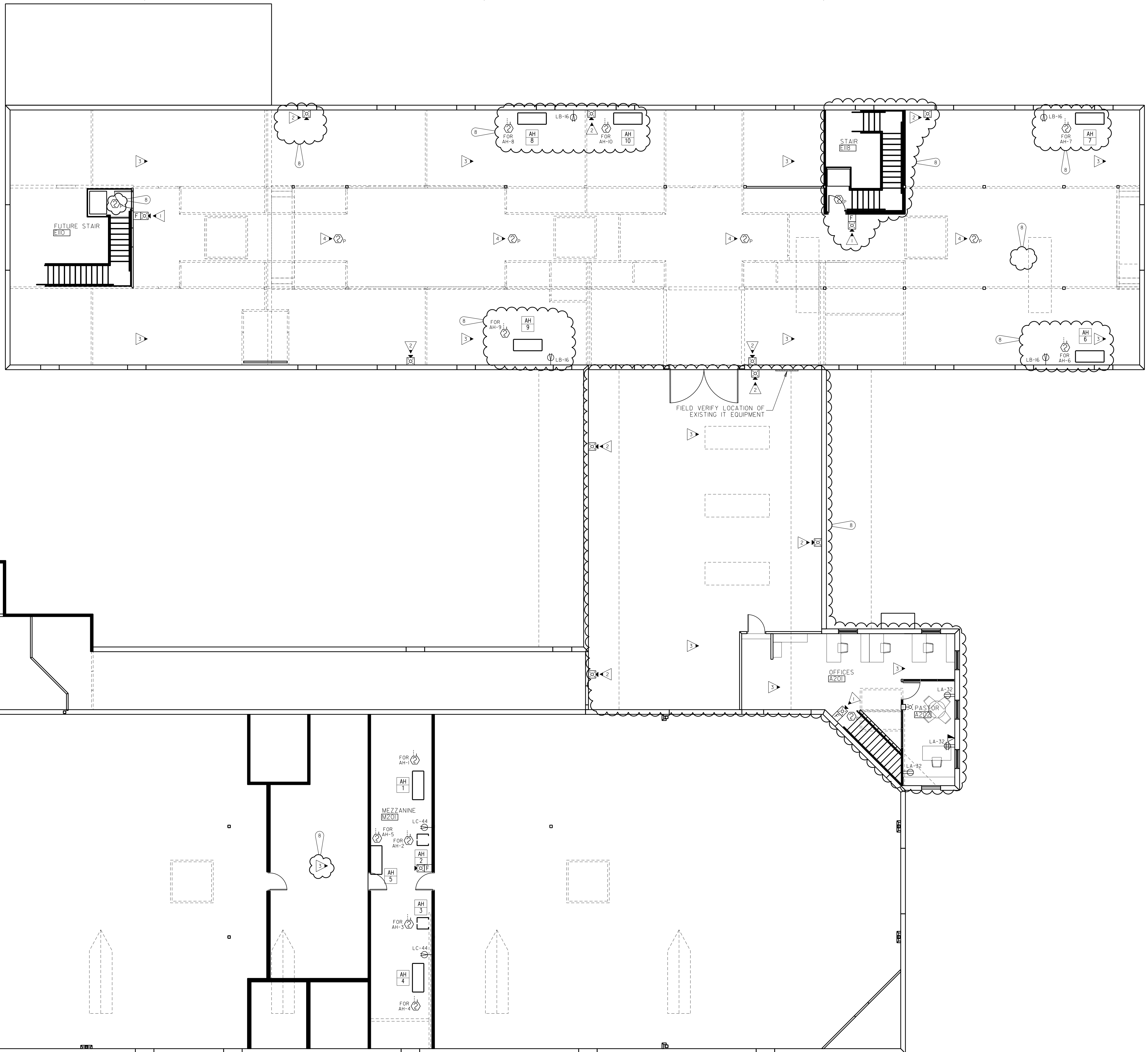
OF

A. SEE SHEET E3.1 FOR GENERAL NOTES.

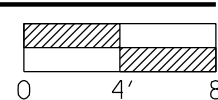
NOTE: THIS INFORMATION HAS BEEN OBTAINED FROM THE NFPA SECTION 450-27 AND THE OFFICE OF INSURANCE AND SAFETY FIRE COMMISSIONER CHAPTER 120-3-3.

KEY PLAN (N.T.S.)

GENERAL NOTES: (THIS SHEET ONLY)  
A. SEE SHEET E3.1 FOR GENERAL NOTES.



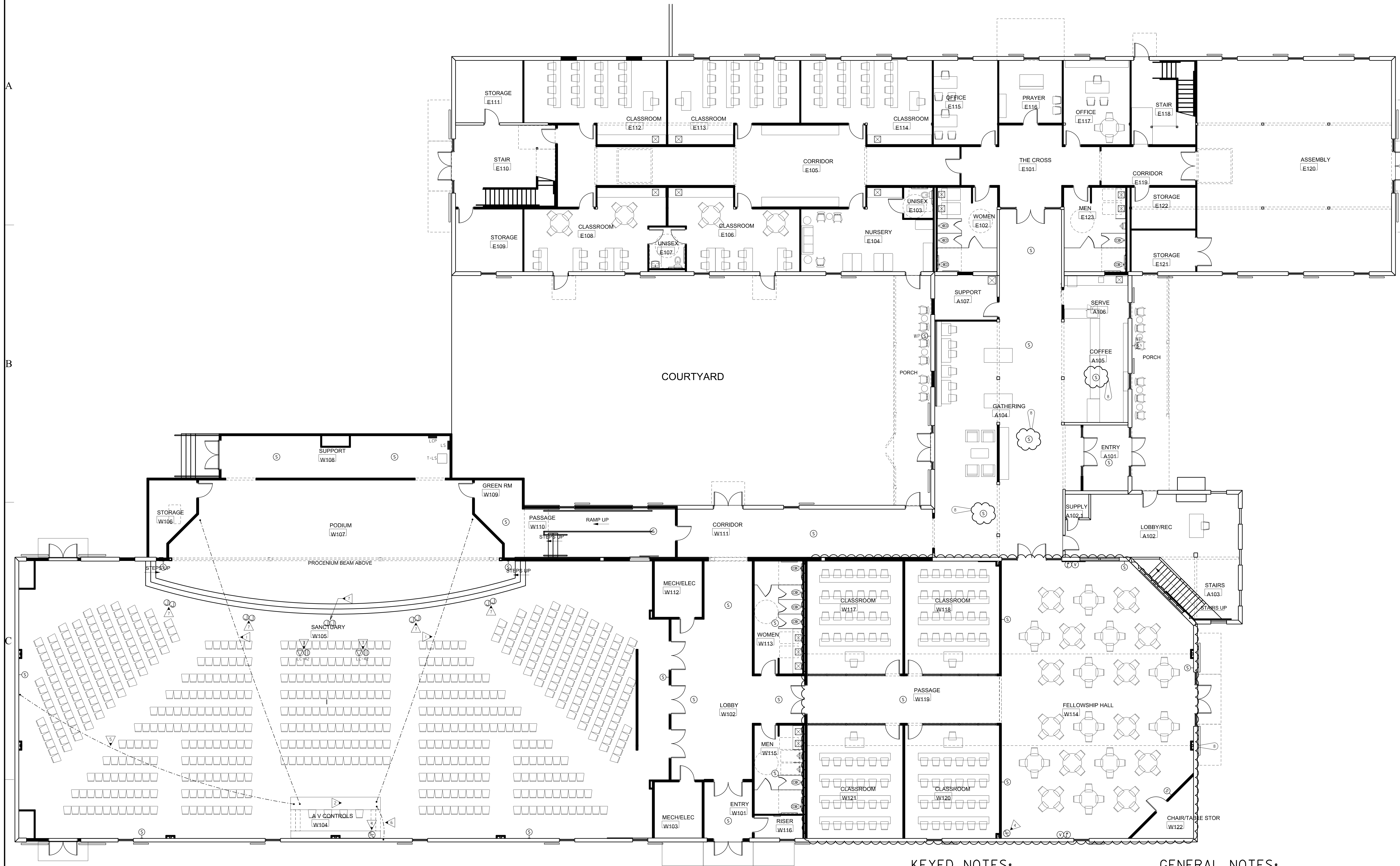
1 SECOND FLOOR PLAN - POWER & SYSTEMS  
E3.3 SCALE: 1/8"=1'-0"



KEYED NOTES: (THIS SHEET ONLY)

- 1 PROVIDE NEW FIRE ALARM PULL STATION AND SPEAKER/STROBE AT STAIR LANDING.
- 2 PROVIDE NEW FIRE ALARM SPEAKER STROBE.
- 3 NO NEW WORK IN AREA DURING PHASE I UNLESS NOTED OTHERWISE.
- 4 PROVIDE NEW FIRE ALARM SMOKE DETECTOR AT EXISTING SMOKE DETECTOR LOCATION. INTERLOCK DETECTORS WITH NEW FIRE ALARM SYSTEM.

PROVIDE ALL BRANCH CIRCUIT CONDUIT/CONDUCTORS AS NECESSARY TO CONNECT ALL DEVICES SHOWN ON THE CIRCUIT. PROVIDE DEDICATED NEUTRALS FOR ALL CIRCUITS. (STRIPED NEUTRAL WITH PHASE COLOR STRIPING)



NOTE:  
THERE IS NOT A SHEET E4.2. THERE IS NO  
NEW A/V WORK ON THE SECOND FLOOR.

1 FIRST FLOOR PLAN - A/V SYSTEM  
SCALE: 1/8"=1'-0"

PROVIDE ALL BRANCH CIRCUIT CONDUIT/CONDUCTORS AS NECESSARY TO  
CONNECT ALL DEVICES SHOWN ON THE CIRCUIT. PROVIDE DEDICATED NEUTRALS  
FOR ALL CIRCUITS. (STRIPED NEUTRAL WITH PHASE COLOR STRIPING)

KEYED NOTES: (THIS SHEET ONLY)

- 1 PROVIDE (2) 1/4 INCH CONDUITS FROM EACH SIDE OF THE A/V CONTROLS LOCATION TO UNDER RAISED FLOOR SYSTEM. COORDINATE WITH OWNER, ARCHITECT, AND A/V CONSULTANT PRIOR TO ROUGH-IN.
- 2 COORDINATE WITH OWNER'S A/V CONSULTANT FOR ADDITIONAL ELECTRICAL REQUIREMENTS NEEDED FOR SOUND AND AUDIO SYSTEMS PROVIDED. PROVIDE ALL POWER AND RACEWAY REQUIRED FOR SYSTEM INSTALLATION.
- 3 PROVIDE CEILING MOUNTED RECEPTACLE AND DATA OUTLET FOR CEILING PROJECTOR. COORDINATE EXACT LOCATION WITH OWNER, ARCHITECT, AND A/V CONSULTANT PRIOR TO ROUGH-IN.
- 4 COORDINATE EXACT LOCATION OF SOUND CONSOLE WITH A/V CONSULTANT AND OWNER PRIOR TO ROUGH-IN.
- 5 PROVIDE (2) 1/4 INCH CONDUITS FROM SIDE OF THE A/V CONTROLS LOCATION TO STUB UP LOCATION NEAR WALL. COORDINATE WITH OWNER, ARCHITECT, AND A/V CONSULTANT PRIOR TO ROUGH-IN. TEMPORARILY CAP ROUGHED IN CONDUIT.
- 6 PROVIDE (4) 2 INCH CONDUITS FROM SIDE OF THE A/V CONTROLS LOCATION TO STUB UP IN WALL AND FINALLY STUB OUT OF WALL AT CEILING STRUCTURE. COORDINATE WITH OWNER, ARCHITECT, AND A/V CONSULTANT PRIOR TO ROUGH-IN.
- 7 PROVIDE (2) J-BOXES FOR FUTURE THEATRICAL LIGHTING BY A/V CONSULTANT. (1) J-BOX FOR POWER AND (1) J-BOX FOR CONTROLS. PROVIDE 3/4 IN. C. FROM POWER J-BOX TO PANEL "LS". PROVIDE 3/4 IN. C. FROM CONTROLS BOX TO THEATER LIGHTING CONTROLS. COORDINATE EXACT REQUIREMENTS AND LOCATIONS WITH OWNER, ARCHITECT, AND A/V CONSULTANT PRIOR TO ROUGH-IN.

GENERAL NOTES: (THIS SHEET ONLY)

A. SEE SHEET E3.J FOR GENERAL NOTES.

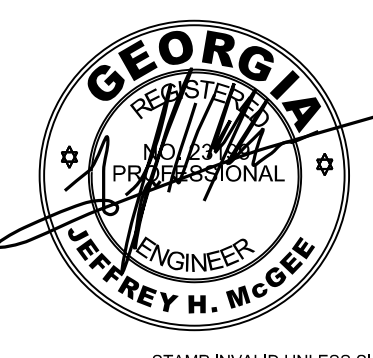
GM  
Architect

102 Sammy Court  
WARNER ROBINS, GEORGIA 31088  
gfmarch@outlook.com  
(478) 365-8976

ARCHITECT

STAMP INVALID UNLESS SIGNED

CONSULTANT



STAMP INVALID UNLESS SIGNED

EDC  
ELECTRICAL DESIGN  
CONSULTANTS  
ELECTRICAL ENGINEERS  
MACON OFFICE - PROJECT #: M24085  
edc1973.com

10641 HIGHWAY 36  
COVINGTON, GA 30014  
770.786.3031

Retrofit & Renovations for  
Madison Methodist Church  
1091 Confederate Highway  
Madison, Georgia 30650

JOB NO.:	02405	
DRAWN BY:	TW	
CHECKED BY:	JM	
DESCRIPTION:	ISSUE	
DATE:	07.24.2025	
DESCRIPTION:		
DATE:		
DESCRIPTION:		
DATE:		
REVISIONS:		
	8	02.09.26
	9	
	10	
	11	
	12	
	13	
	14	

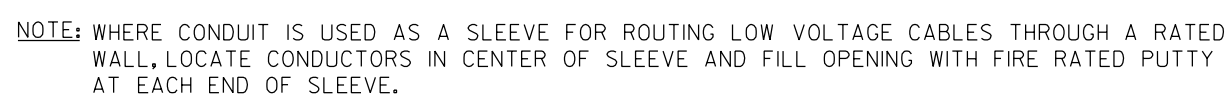
THESE DRAWINGS ARE THE PROPERTY OF GFMARCH  
AND ARE NOT TO BE REPRODUCED OR REUSED WITHOUT  
PERMISSION AND CREDIT.  
COPYRIGHT: (C) 2024

SHEET

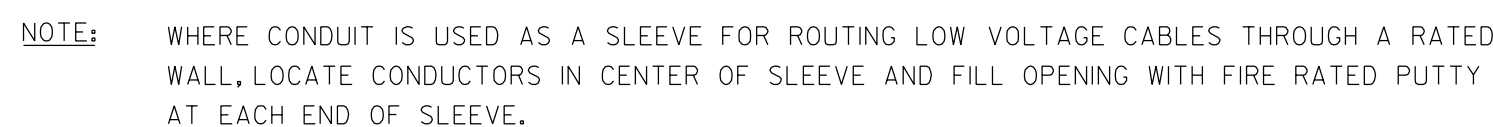
E4.1

OF





NOT TO SCALE



NOT TO SCALE



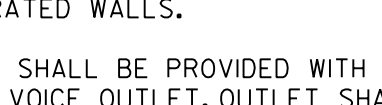
1) PROVIDE (2) CAT 6A IN 1IN. C. TO BISCUIT JACK FLUSH MOUNTED IN CEILING FOR WIRELESS AP. WIRELESS ACCESS POINT PROVIDED BY OTHERS.

2) PROVIDE (2) - 3 IN. CONDUITS FOR DATA/TEL AND (1) SPARE CONDUIT. (1) CONDUIT FOR (1) 50 PAIR EXTERIOR RATED, GEL FILLED COPPER CAT 6E. (1) CONDUIT FOR (2) 24 GA MULTIMODE OM3 AND (1) 24 GA SINGLEMODE FIBER. EACH IN INNERDUCT. COORDINATE WITH OWNER FOR EXACT FIBER SPECIFICATIONS AND TERMINATIONS. COORDINATE EXACT DATA/TEL STUB OUT LOCATIONS AT DEMARC WITH SERVING UTILITY COMPANIES.

NOTES:

- A. THE CONTRACTOR IS RESPONSIBLE FOR PROVIDING A FULL J-HOOK SYSTEM IN THE CORRIDORS WITH ACCESSIBLE CEILINGS FOR LOW VOLTAGE CABLING.
- B. ALL J-HOOKS SHALL BE SPACED NO MORE THAN 48 INCHES APART AND NO MORE THAN 12 INCHES FROM THE CORNER OF ANY SPACE.
- C. PROVIDE J-HOOKS NO MORE THAN 12 INCHES AWAY FROM CONDUIT SLEEVES.
- D. WHERE J-HOOKS ARE (2) ROWS: SPACING BETWEEN THE ROWS SHALL BE 12 INCHES.
- E. CONDUIT SLEEVES SHALL BE AT THE SAME LEVEL AS THE ROWS OF J-HOOKS.
- F. FIRE SEAL AROUND ALL CONDUIT SLEEVES, SEE ARCHITECTURAL SHEET FOR REQUIRED RATINGS.
- G. COORDINATE THE EXACT LEVEL OF J-HOOKS AND CONDUIT SLEEVES WITH OTHER TRADES PRIOR TO ROUGHING.
- H. J-HOOKS SHALL NOT BE SUPPORTED BY GYPSUM WALL BOARD, J-HOOKS SHALL BE SUPPORTED BY BLOCK WITH GYPSUM STUD, SEE ARCHITECTURAL PLAN FOR WALL MATERIALS.
- I. ALL CABLING SHALL BE NEATLY BUNDLED UTILIZING "NOT A CINCH" TYPE RATED VELCRO TIE WRAPS.
- J. J-HOOKS SHALL SUPPORT CABLING FOR: FIRE ALARM, DATA, TELEPHONE, CATV, SECURITY, AND SOUND.
- K. ONE ROW SHALL SUPPORT SOUND SYSTEM CABLING, ONE ROW SHALL SUPPORT DATA/TELEPHONE CABLING, ONE ROW SHALL SUPPORT CATV CABLING, ONE ROW SHALL SUPPORT FIRE ALARM SYSTEM, ONE ROW SHALL SUPPORT SECURITY SYSTEM.
- L. SEE DETAIL - CONCRETE WALL PENETRATION, 6/ES.2.
- M. SEE DETAIL - GYPSUM WALLBOARD PENETRATION, 5/ES.2.
- N. WHERE J-HOOKS ARE SHOWN ABOVE SLOTTED SOFFITS TWO FEET WIDE, PROVIDE J-HOOKS HUNG FROM STRUCTURE (4 HOOKS PER 3/8" IN THREADED ROD).
- O. PROVIDE (2) 1/2" CONDUIT SLEEVES INTO ALL SPACES FROM CORRIDOR WHERE RATED WALLS OCCUR.

GENERAL NOTES:(DATA CABLING)

- ADDITIONAL WALL SLEEVES AND WALL PENETRATIONS WILL BE REQUIRED FOR NETWORK CABLING, PROVIDE AS NECESSARY AN ARRESTOR ALL PENETRATIONS THROUGH RATED WALLS.
2. ALL JACKS SHALL BE PROVIDED WITH ICON DENOTING DATA OR VOICE OUTLET, OUTLET SHALL BE LABELED WITH FOLLOWING NOMENCLATURE.
- 
- ALL PATCH PANELS AND I/O BLOCKS SHALL BE CORRESPONDINGLY LABELED.
3. PROVIDE METAL D-RING OR RING RUNS AS NECESSARY TO PROPERLY LACE AND SUPPORT ALL CABLING AT BACKBOARDS.
4. REFER TO 10/AN PLANS SHOWING OUTLET LOCATIONS, PANEL LOCATIONS, CEILING TYPES, ETC.
5. GROUND ALL RACKS WITH #6 COPPER CABLEL AT EACH BACKBOARD. CONTRACTOR SHALL ROUTE #6G, #4N, C. TO GROUND PLATE. PROVIDE 12 IN. CABLE RUNWAY SPANNING FROM TOP OF RACK TO WALL AND TURNED UP TO ABOVE DROP TILE CEILING IN ORDER TO ROUTE CABLE TO RACK. AT EACH RACK LOCATION PROVIDE A 3/4N x 4 FT x 8 FT. BACKBOARD PAINTED WITH TWO COATS OF FLAME RETARDANT PAINT.
6. TY-WRAPS SHALL NOT BE CINCHED DOWN TIGHT ENOUGH TO DEFORM CABLES. MAINTAIN MINIMUM BEND RADIUS ON FIBER, TIE CABLES, STATION WIRES, AND PATCH CORDS. REFER TO SPECIFICATIONS FOR CABLING. ALL CABLING SHALL BE PLENUM RATED.
8. PROVIDE VELCRO CABLE WRAPS AT RACKS TO PROPERLY LACE AND TRAIN PATCH CORDS AT RACKS IN AN ORDERLY FASHION.
9. FIELD VERIFY MOUNTING SPACE IN DATA RACK ROOM. PROVIDE WALL MOUNTED RACKS WHERE NECESSARY.
10. CABLING FOR COMPUTER DATA SHALL BE ROUTED VIA CABLE TRAY SYSTEM. PROVIDE CONDUIT TO 6 IN. ABOVE ACCESSIBLE CEILING. BUNDLE CABLES, SLEEVE THROUGH CORRIDOR WALL USING 4 IN.C.
11. NETWORK HUBS AND ELECTRONICS, RACK MOUNTED UPS, PATCH CORDS AND FIBER OPTIC PATCH CORDS ARE INCLUDED IN CONTRACT.
12. REFER TO POWER SHEETS FOR ADDITIONAL INFORMATION.
13. SEE WIRE MANAGEMENT NOTES.

SERVICE IS SIZED/RATED FOR 2000 AMPS

**DEMAND LOAD - 208V 3-PHASE AMPS**  
PANEL IS SIZED/RATED FOR 400 AMPS.

PANEL IS SIZED/RATED FOR 400 AMPS.

DEMAND LOAD - VOLT-AMPERES  
DEMAND LOAD - 208V 3-PHASE AMPS

<b>Project Information</b>	
Energy Code:	2015 IECC
Project Title:	Retrofit & Renovations for Madison Methodist Church
Project Type:	Alteration

Construction Site:	Owner/Agent:	Designer/Contractor:
1091 Confederate Highway		Electrical Design Consultants
Madison, GA 30650		175 New Street
		Suite 1
		Macon, GA 31201

Allowed Interior Lighting Power			
A Area Category	B Floor Area (ft <sup>2</sup> )	C Allowed Watts / ft <sup>2</sup>	D Allowed Watts (B X C)
1-Religious Building	29380	1.00	29380
		Total Allowed Watts = 29380	

Proposed Interior Lighting Power					A	B	C	D	E
Fixture ID : Description / Lamp / Wattage Per Lamp / Ballast					Lamps / Fixture	# of Fixtures	Fixture Watt	(C x D)	
<b>Religious Building (29380 sq.ft.)</b>									
A2	A2 2 FT. X 4 FT. TROFFER, LED Panel 40W		1	39	40	1560			
A3	A3 2 FT. X 4 FT. TROFFER, LED Panel 35W		1	7	32	224			
B1	B1 2 FT. X 2 FT. TROFFER, LED Panel 35W		1	41	308				
B2	B2 2 FT. X 2 FT. TROFFER, LED Panel 35W		1	1	35	35			
B3	B3 2 FT. X 2 FT. TROFFER, LED Panel 35W		1	1	27	27			
C1	C1 4 FT. SURFACE MOUNT, LED Other Fixture Watt 50W		1	2	100	200			
D	D 4 4' DOWNLIGHT, LED Other Fixture Unit 25W		1	64	22	1408			
E	E 4 4' STRIP LIGHT, LED Other Fixture Unit 40W		1	7	42	294			
F1	F1 1 TWO LIGHT WALL SCIENCE, LED Other Fixture Unit 40W		2	4	80	320			
F2	F2 FOUR LIGHT PENDANT LANTERN, LED Other Fixture Unit 60W		2	4	5	300			
F3	F3 2 FT. VANTY LIGHT, LED Other Fixture Unit 20W		1	6	25	150			
F5	F5 16 IN. DIAMETER CHANDLER, LED Other Fixture Unit 25W		8	2	25	50			
F6	F6 16 IN. WALL SCIENCE, LED Other Fixture Unit 25W		1	2	25	50			
F8	F8 FOUR LIGHT PENDANT LANTERN, LED Other Fixture Unit 60W		4	8	60	480			
F7	F7 16 IN. WALL SCIENCE, LED Other Fixture Unit 60W		1	3	60	180			
F8	F8 8 IN. SURFACE MOUNT, LED Other Fixture Unit 60W		1	3	60	180			
F9	F9 16 IN. DIAMETER PENDANT, LED Other Fixture Unit 60W		1	15	60	900			
F10	F10 22 IN. DIAMETER PENDANT, LED Other Fixture Unit 40W		3	6	40	240			
F11	F11 11" 16 IN. DIAMETER SURFACE MOUNT, LED Other Fixture 13W		3	6	40	240			
G	G 6 6" SURFACE PANEL, LED Other Fixture 13W		1	9	14	126			
H	H 30 IN. ARCHITECTURAL PENDANT, Other		1	2	30	200			
J	J 4 4' WALL FIXTURE, LED Other Fixture Unit 40W		1	4	40	160			
K	K 6 IN. DOWNLIGHT, LED Other Fixture Unit 20W		1	67	29	1943			
L	L 1 1/2 IN. CYLINDER, LED Other Fixture Unit 20W		1	70	20	2000			
M	M 12 IN. CYLINDER, LED Other Fixture Unit 20W		1	22	40	880			
N	N 6 IN. CYLINDER WALLWASH, LED Other Fixture Unit 28W		1	22	29	638			
O	O 1 4 IN. WALL WASH, LED Other Fixture Unit 10W		1	12	19	228			
P	P 1 1/2 FT. CYLINDER PENDANT, Other		1	102	23	2346			
Q1	Q1 4 CYLINDRA TRACK HEAD, LED Other Fixture Unit 60W		1	3	55	165			
Q2	Q2 CYLINDRA TRACK HEAD, LED Other Fixture Unit 60W		1	4	55	220			
Q3	Q3 CYLINDRA TRACK HEAD, LED Other Fixture Unit 60W		1	55	440	55			
							Total Proposed Watts =	15630	

## Interior Lighting PASSES

## Interior Lighting Compliance Statement

**Compliance Statement:** The proposed interior lighting alteration project represented in this document is consistent with the building plans, specifications, and other calculations submitted with this permit application. The proposed interior lighting systems have been designed to meet the 2015 IECC requirements in COMcheck Version 4.1.5.5 and to comply with any applicable rules and regulations of the local jurisdiction.

Jeffrey H. McGee, PE  
Name - Title

  
Signature

02/11/2026  
Date

<b>Project Information</b>	
Energy Code:	2015 IECC
Project Title:	Retrofit & Renovations for Madison Methodist Church
Project Type:	Alteration
Exterior Lighting Zone	2 (Residential mixed use area (LZ2))

Construction Site:	Owner/Agent:	Designer/Contractor:
1091 Confederate Highway		Electrical Design
Madison, GA 30650		175 New Street
		Suite 1
		Macon, GA 31201

Allowed Exterior Lighting Power				
A	B	C	D	E
Area/Surface Category	Quantity	Allowed Watts / Unit	Tradable Wattle	Allowed Watts (B X C)
Front Door (Main entry)	6 ft of door	20	Yes	120
Porch (Entry canopy)	710 sq ft	0.02	Yes	178
Building Exterior (Walkway < 10 feet wide)	1050 ft of	0.7	Yes	735
			Total Tradable Watts (a) =	1032
			Total Allowed Watts =	1032
			Total Allowed Supplemental Watts (b) =	600

(b) A supplemental allowance equal to 600 watts may be applied toward compliance of both non-tradable and tradable areas/surfaces.

## Proposed Exterior Lighting Power

A	B	C	D	E
Fixture ID / Description / Lamp / Wattage Per Lamp / Ballast	Lamps /	# of Fixtures	D Fixture Watt.	(C x D)
Front Door / Main entry 6' of door width). Tradeable Wattage Unit:				
OB OB ARCHITECTURAL SCENE LED Other Fixture Unit 60W		2	60	120
Porch Entry canopy 7'10" R2CL Tradeable Wattage Unit:				
CA CA #4 IN RETROFIT DOWN LIGHT 1' LED Other Fixture Unit 13W		7	14	98
Building Exterior (Walkway < 10 foot wide 1950 ft of walkway length). Tradeable Wattage Unit:				
OC OC BUILDING WALL PACK LED Other Fixture Unit 16W		1	30	16
OC OC BUILDING WALL PACK LED Other Fixture Unit 30W		1	30	30
	Total Tradeable Proposed Watts =		1130	

## Exterior Lighting PASSES

### Exterior Lighting Compliance Statement

**Compliance Statement:** The proposed exterior lighting alteration project represented in this document is consistent with the building plans, specifications, and other calculations submitted with this permit application. The proposed exterior lighting systems have been designed to meet the 2015 IECC requirements in COMcheck Version 4.1.5.5 and to comply with any applicable mandatory requirements listed in the Inspection Checklist.

Jeffrey H. McGee, PE  
Name - Title

  
Signature

02/11/2026  
Date